

## Product datasheet for TA324112

### REST Rabbit Polyclonal Antibody

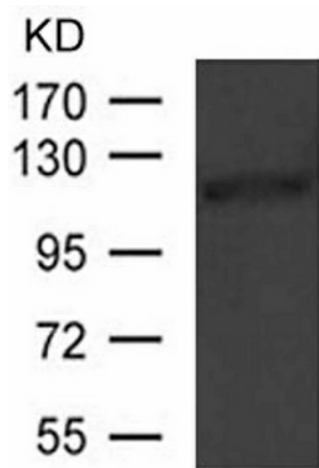
#### Product data:

Product Type:	Primary Antibodies
Applications:	WB
Recommended Dilution:	WB: 1:500-1000
Reactivity:	Human
Host:	Rabbit
Isotype:	IgG
Clonality:	Polyclonal
Immunogen:	Peptide sequence around aa.873~877(R-E-E-A-S) derived from Human REST.
Formulation:	PBS pH7.3, 0.05% NaN <sub>3</sub> , 50% glycerol
Concentration:	lot specific
Purification:	Antigen affinity purification
Conjugation:	Unconjugated
Storage:	Store at -20°C as received.
Stability:	Stable for 12 months from date of receipt.
Predicted Protein Size:	122 kDa
Gene Name:	RE1 silencing transcription factor
Database Link:	<a href="#">NP_001180437</a> <a href="#">Entrez Gene 5978 Human</a> <a href="#">Q13127</a>
Background:	Transcriptional repressor which binds neuron-restrictive silencer element (NRSE) and represses neuronal gene transcription in non-neuronal cells. Restricts the expression of neuronal genes by associating with two distinct corepressors, mSin3 and CoREST, which in turn recruit histone deacetylase to the promoters of REST-regulated genes. Mediates repression by recruiting the BHC complex at RE1/NRSE sites which acts by deacetylating and demethylating specific sites on histones, thereby acting as a chromatin modifier.
Synonyms:	NRSF; WT6; XBR
Protein Families:	Transcription Factors


[View online »](#)

Protein Pathways: Huntington's disease

**Product images:**



Predicted band size: 122 kDa. Positive control: Hela cells lysate. Recommended dilution: 1/ 500-1000. (Gel: 8%SDS-PAGE Lysate: 30 ug Primary antibody: 1/500 dilution Secondary antibody: Goat anti Rabbit IgG - H&L (HRP) at 1/10000 dilution Exposure time: 1 minute)