

Product datasheet for **TA324108**

TRAF1 Rabbit Polyclonal Antibody

Product data:

| | |
|-------------------------|--|
| Product Type: | Primary Antibodies |
| Applications: | IHC, WB |
| Recommended Dilution: | WB: 200-1000 WB positive control: Human lymphoma tissue IHC: 15-50 Positive control: Human colon cancer Predicted cell location: Cytoplasm |
| Reactivity: | Human, Mouse |
| Host: | Rabbit |
| Isotype: | IgG |
| Clonality: | Polyclonal |
| Immunogen: | Fusion protein corresponding to a region derived from 182-412 amino acids of human TNF receptor-associated factor 1 |
| Formulation: | PBS pH7.3, 0.05% NaN ₃ , 50% glycerol |
| Concentration: | lot specific |
| Purification: | Antigen affinity purification |
| Conjugation: | Unconjugated |
| Storage: | Store at -20°C as received. |
| Stability: | Stable for 12 months from date of receipt. |
| Predicted Protein Size: | 46 kDa |
| Gene Name: | TNF receptor associated factor 1 |
| Database Link: | NP_001177874 Entrez Gene 22029 Mouse Entrez Gene 7185 Human Q13077 |



[View online »](#)

Background:

The protein encoded by this gene is a member of the TNF receptor (TNFR) associated factor (TRAF) protein family. TRAF proteins associate with; and mediate the signal transduction from various receptors of the TNFR superfamily. This protein and TRAF2 form a heterodimeric complex; which is required for TNF-alpha-mediated activation of MAPK8/JNK and NF-kappaB. The protein complex formed by this protein and TRAF2 also interacts with inhibitor-of-apoptosis proteins (IAPs); and thus mediates the anti-apoptotic signals from TNF receptors. The expression of this protein can be induced by Epstein-Barr virus (EBV). EBV infection membrane protein 1 (LMP1) is found to interact with this and other TRAF proteins; this interaction is thought to link LMP1-mediated B lymphocyte transformation to the signal transduction from TNFR family receptors.

Synonyms:

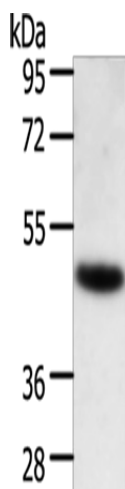
EBI6; MGC:10353

Protein Families:

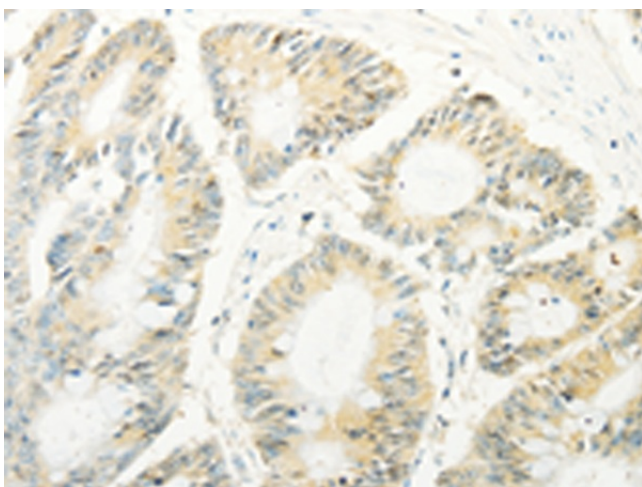
Druggable Genome

Protein Pathways:

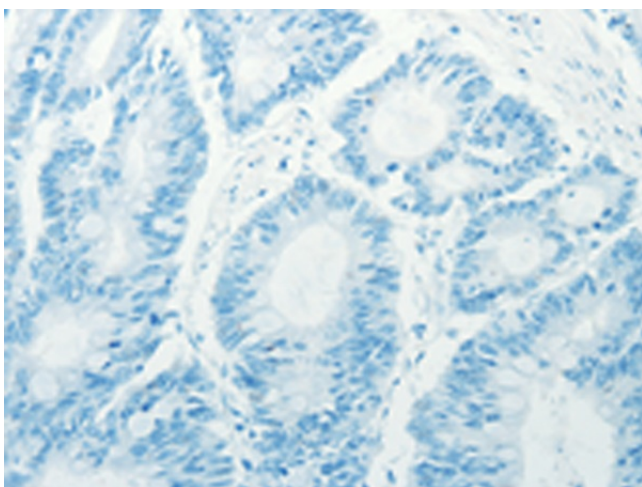
Pathways in cancer, Small cell lung cancer

Product images:


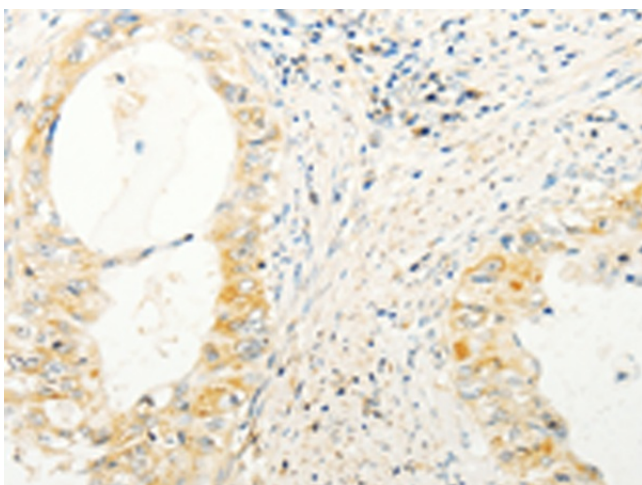
Gel: 10%SDS-PAGE
Lysate: 40 µg
Lane: Human lymphoma tissue
Primary antibody: TA324108 (TRAF1 Antibody) at dilution 1/350
Secondary antibody: Goat anti rabbit IgG at 1/8000 dilution
Exposure time: 1 second



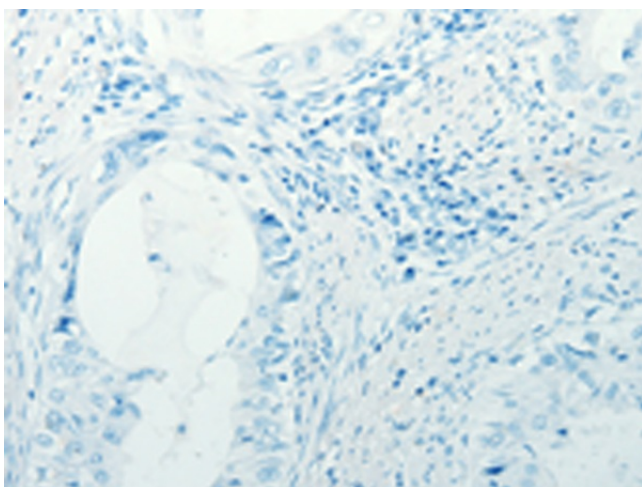
Immunohistochemistry of paraffin-embedded Human colon cancer tissue using TA324108 (TRAF1 Antibody) at dilution 1/20 (Original magnification: $\times 200$)



Immunohistochemistry of paraffin-embedded Human colon cancer tissue using TA324108 (TRAF1 Antibody) at dilution 1/20, treated with fusion protein. (Original magnification: $\times 200$)



Immunohistochemistry of paraffin-embedded Human cervical cancer tissue using TA324108 (TRAF1 Antibody) at dilution 1/20 (Original magnification: $\times 200$)



Immunohistochemistry of paraffin-embedded Human cervical cancer tissue using TA324108 (TRAF1 Antibody) at dilution 1/20, treated with fusion protein. (Original magnification: ×200)