

Product datasheet for **TA324107**

RhoGDI (ARHGDI) Rabbit Polyclonal Antibody

Product data:

Product Type:	Primary Antibodies
Applications:	WB
Recommended Dilution:	WB: 1:500-2000
Reactivity:	Human, Mouse, Rat
Host:	Rabbit
Isotype:	IgG
Clonality:	Polyclonal
Immunogen:	Full length fusion protein
Formulation:	PBS pH7.3, 0.05% NaN ₃ , 50% glycerol
Concentration:	lot specific
Purification:	Antigen affinity purification
Conjugation:	Unconjugated
Storage:	Store at -20°C as received.
Stability:	Stable for 12 months from date of receipt.
Predicted Protein Size:	23 kDa
Gene Name:	Rho GDP dissociation inhibitor alpha
Database Link:	NP_001172006 Entrez Gene 192662 MouseEntrez Gene 360678 RatEntrez Gene 396 Human P52565



[View online »](#)

Background:

Rho family small GTPases, including Rho, Rac and cdc42, act as molecular switches, regulating processes such as cell migration, adhesion, proliferation and differentiation. They are activated by guanine nucleotide exchange factors (GEFs), which catalyze the exchange of bound GDP for GTP, and inhibited by GTPase activating proteins (GAPs), which catalyze the hydrolysis of GTP to GDP. A third level of regulation is provided by the stoichiometric binding of Rho GDP dissociation inhibitor (RhoGDI). RhoGDI affects Rho activity by inhibiting nucleotide exchange and membrane association, regulating activity and localization. The inhibitory and shuttling functions of RhoGDI have been uncoupled using mutant forms of RhoGDI. Phosphorylation of GDIs and/or GTPases can modulate their affinity for each other and, therefore, GTPase mediated signaling. PAK1 phosphorylation of RhoGDI at serines 101 and 174 causes release and activation of Rac1, but not RhoA.

Synonyms:

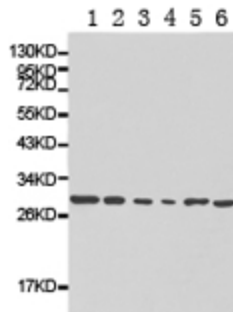
GDIA1; HEL-S-47e; NPHS8; RHOGDI; RHOGDI-1

Protein Families:

Druggable Genome

Protein Pathways:

Neurotrophin signaling pathway

Product images:


Predicted band size: 23 kDa. Positive control: Jurkat, 293, A431, HeLa and HL60 cell, mouse pancreas tissue lysate. Recommended dilution: 1/500-2000. (Gel: 10%SDS-PAGE Lane 1: Jurkat cell lysate Lane 2: 293 cell lysate Lane 3: A431 cell lysate Lane 4: HeLa cell lysate Lane 5: HL60 cell lysate Lane 6: Mouse pancreas tissue lysate Lysates: 40 ug per lane Primary antibody: 1/500 dilution Secondary antibody: Goat anti Rabbit IgG - H&L (HRP) at 1/10000 dilution Exposure time: 1 minute)