

Product datasheet for **TA324106**

Nebulin (NEB) Rabbit Polyclonal Antibody

Product data:

Product Type:	Primary Antibodies
Applications:	IHC
Recommended Dilution:	IHC: 50-200 Positive control: Human lung cancer Predicted cell location: Cytoplasm
Reactivity:	Human
Host:	Rabbit
Isotype:	IgG
Clonality:	Polyclonal
Immunogen:	Synthetic peptide corresponding to a region derived from 118-132 amino acids of human nebulin
Formulation:	PBS pH7.3, 0.05% NaN ₃ , 50% glycerol
Concentration:	lot specific
Purification:	Antigen affinity purification
Conjugation:	Unconjugated
Storage:	Store at -20°C as received.
Stability:	Stable for 12 months from date of receipt.
Gene Name:	nebulin
Database Link:	NP_004534 Entrez Gene 4703 Human P20929



[View online »](#)

Background:

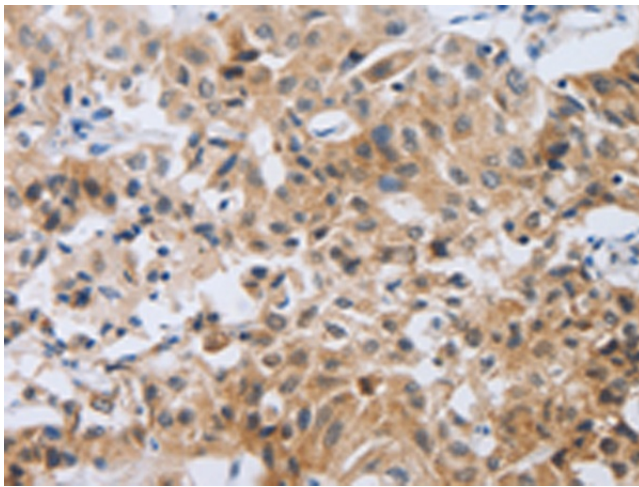
This gene encodes nebulin; a giant protein component of the cytoskeletal matrix that coexists with the thick and thin filaments within the sarcomeres of skeletal muscle. In most vertebrates; nebulin accounts for 3 to 4% of the total myofibrillar protein. The encoded protein contains approximately 30-amino acid long modules that can be classified into 7 types and other repeated modules. Protein isoform sizes vary from 600 to 800 kD due to alternative splicing that is tissue-; species-;and developmental stage-specific. Of the 183 exons in the nebulin gene; at least 43 are alternatively spliced; although exons 143 and 144 are not found in the same transcript. Of the several thousand transcript variants predicted for nebulin; the RefSeq Project has decided to create three representative RefSeq records. Mutations in this gene are associated with recessive nemaline myopathy.

Synonyms:

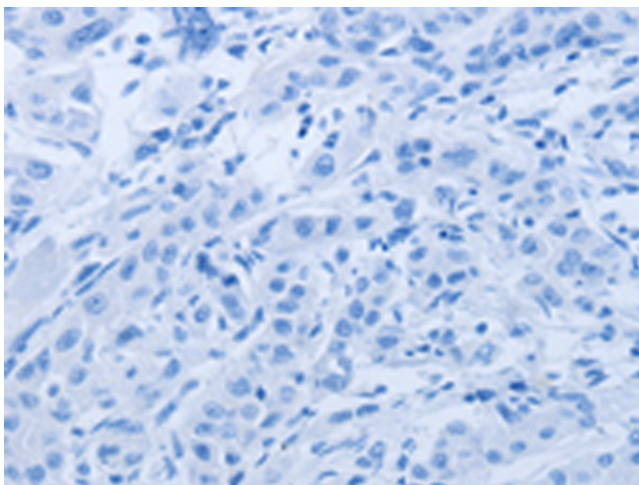
NEB177D; NEM2

Protein Families:

Druggable Genome

Product images:

Immunohistochemistry of paraffin-embedded Human lung cancer tissue using TA324106 (NEB Antibody) at dilution 1/80 (Original magnification: ×200)



Immunohistochemistry of paraffin-embedded Human lung cancer tissue using TA324106 (NEB Antibody) at dilution 1/80, treated with synthetic peptide. (Original magnification: ×200)