

Product datasheet for **TA324104**

DNA PKcs (PRKDC) Rabbit Polyclonal Antibody

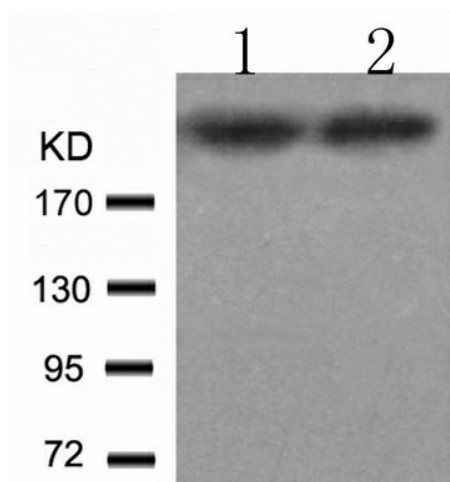
Product data:

Product Type:	Primary Antibodies
Applications:	WB
Recommended Dilution:	WB: 1:500-1000
Reactivity:	Human
Host:	Rabbit
Isotype:	IgG
Clonality:	Polyclonal
Immunogen:	Peptide sequence around aa.2607~2611 (V-E-T-Q-A) derived from Human DNA-PK.
Formulation:	PBS pH7.3, 0.05% NaN ₃ , 50% glycerol
Concentration:	lot specific
Purification:	Antigen affinity purification
Conjugation:	Unconjugated
Storage:	Store at -20°C as received.
Stability:	Stable for 12 months from date of receipt.
Predicted Protein Size:	469 kDa
Gene Name:	protein kinase, DNA-activated, catalytic polypeptide
Database Link:	NP_001075109 Entrez Gene 5591 Human P78527
Background:	The PRKDC gene encodes the catalytic subunit of a nuclear DNA-dependent serine/threonine protein kinase (DNA-PK). The second component is the autoimmune antigen Ku (MIM 152690), which is encoded by the G22P1 gene on chromosome 22q. On its own, the catalytic subunit of DNA-PK is inactive and relies on the G22P1 component to direct it to the DNA and trigger its kinase activity; PRKDC must be bound to DNA to express its catalytic properties
Synonyms:	DNA-PKcs; DNAPK; DNPk1; HYRC; HYRC1; IMD26; p350; XRCC7
Protein Families:	Druggable Genome, Protein Kinase
Protein Pathways:	Cell cycle, Non-homologous end-joining



[View online »](#)

Product images:



Predicted band size: 469 kDa. Positive control: HT29 and HepG2 cells lysate. Recommended dilution: 1/ 500-1000. (Gel: 8%SDS-PAGE Lane 1: HT29 cells lysate Lane 2: HepG2 cells lysate Lysates: 30 ug per lane Primary antibody: 1/500 dilution Secondary antibody: Goat anti Rabbit IgG - H&L (HRP) at 1/10000 dilution Exposure time: 1 minute)