

## Product datasheet for **TA324099**

### ABCC10 Rabbit Polyclonal Antibody

#### Product data:

Product Type:	Primary Antibodies
Applications:	IHC
Recommended Dilution:	IHC: 25-50 Positive control: Human breast cancer Predicted cell location: Cytoplasm, Cell membrane
Reactivity:	Human
Host:	Rabbit
Isotype:	IgG
Clonality:	Polyclonal
Immunogen:	Synthetic peptide corresponding to a region derived from 840-853 amino acids of human ATP-binding cassette, sub-family C (CFTR/MRP), member 10
Formulation:	PBS pH7.3, 0.05% NaN <sub>3</sub> , 50% glycerol
Concentration:	lot specific
Purification:	Antigen affinity purification
Conjugation:	Unconjugated
Storage:	Store at -20°C as received.
Stability:	Stable for 12 months from date of receipt.
Gene Name:	ATP binding cassette subfamily C member 10
Database Link:	<a href="#">NP_258261</a> <a href="#">Entrez Gene 89845 Human</a> <a href="#">Q5T3U5</a>
Background:	The protein encoded by this gene is a member of the superfamily of ATP-binding cassette (ABC) transporters. ABC proteins transport various molecules across extra- and intra-cellular membranes. ABC genes are divided into seven distinct subfamilies (ABC1; MDR/TAP; MRP; ALD; OABP; GCN20; and White). This ABC full-transporter is a member of the MRP subfamily which is involved in multi-drug resistance. Multiple transcript variants encoding different isoforms have been found for this gene.
Synonyms:	EST182763; MRP7; SIMRP7

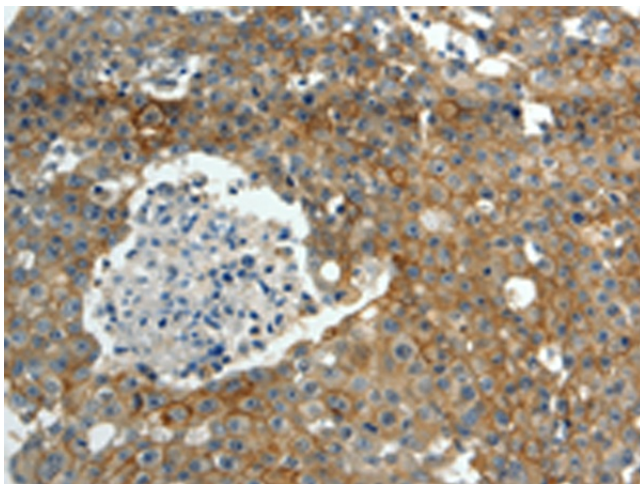


[View online »](#)

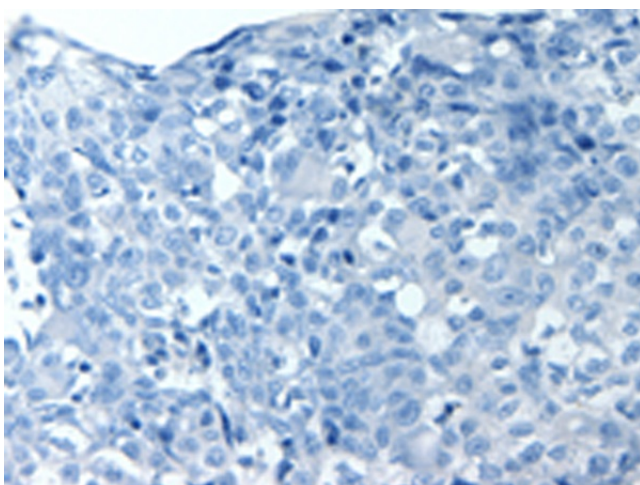
Protein Families: Druggable Genome, Transmembrane

Protein Pathways: ABC transporters

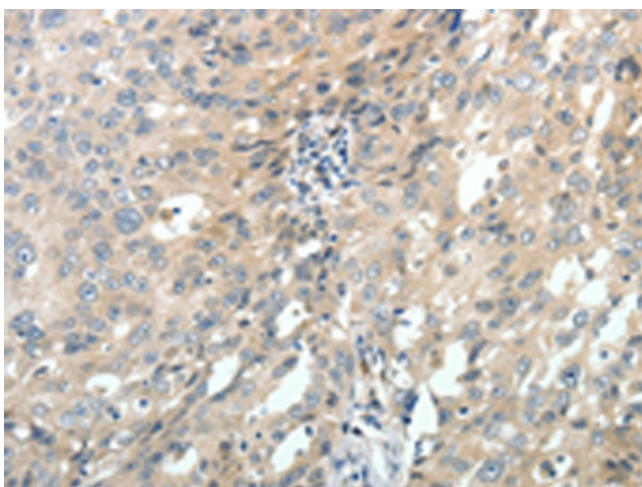
### Product images:



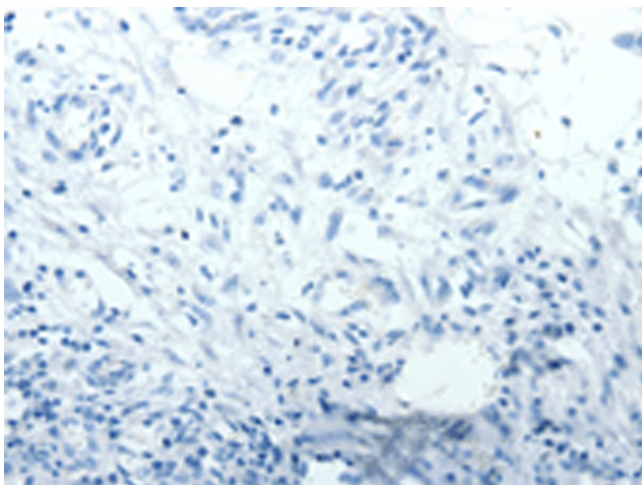
Immunohistochemistry of paraffin-embedded Human breast cancer tissue using TA324099 (ABCC10 Antibody) at dilution 1/30 (Original magnification:  $\times 200$ )



Immunohistochemistry of paraffin-embedded Human breast cancer tissue using TA324099 (ABCC10 Antibody) at dilution 1/30, treated with synthetic peptide. (Original magnification:  $\times 200$ )



Immunohistochemistry of paraffin-embedded Human ovarian cancer tissue using TA324099 (ABCC10 Antibody) at dilution 1/30 (Original magnification:  $\times 200$ )



Immunohistochemistry of paraffin-embedded Human ovarian cancer tissue using TA324099 (ABCC10 Antibody) at dilution 1/30, treated with synthetic peptide. (Original magnification:  $\times 200$ )