

## Product datasheet for **TA324095S**

### MAP3K12 Rabbit Polyclonal Antibody

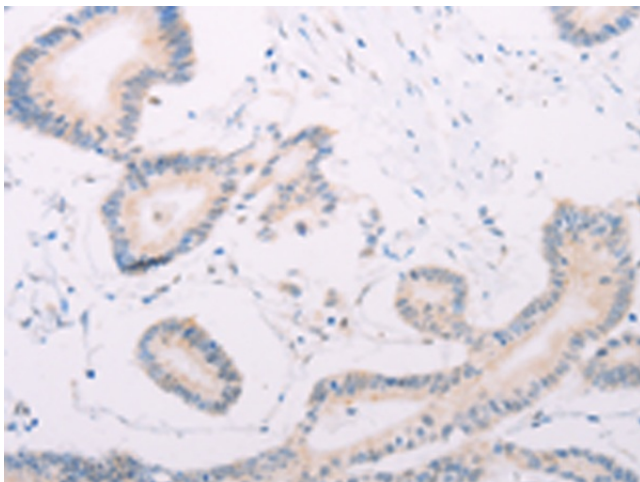
#### Product data:

Product Type:	Primary Antibodies
Applications:	IHC
Recommended Dilution:	IHC: 25-100 Positive control: Human colon cancer Predicted cell location: Cytoplasm
Reactivity:	Human, Mouse, Rat
Host:	Rabbit
Isotype:	IgG
Clonality:	Polyclonal
Immunogen:	Fusion protein corresponding to a region derived from 125-366 amino acids of human mitogen-activated protein kinase kinase kinase 12
Formulation:	PBS pH7.3, 0.05% NaN <sub>3</sub> , 50% glycerol
Purification:	Antigen affinity purification
Conjugation:	Unconjugated
Storage:	Store at -20°C as received.
Stability:	Stable for 12 months from date of receipt.
Gene Name:	mitogen-activated protein kinase kinase kinase 12
Database Link:	<a href="#">NP_006292</a> <a href="#">Entrez Gene 25579 Rat</a> <a href="#">Entrez Gene 26404 Mouse</a> <a href="#">Entrez Gene 7786 Human</a> <a href="#">Q12852</a>
Background:	This gene encodes a member of the serine/threonine protein kinase family. This kinase contains a leucine-zipper domain and is predominately expressed in neuronal cells. The phosphorylation state of this kinase in synaptic terminals was shown to be regulated by membrane depolarization via calcineurin. This kinase forms heterodimers with leucine zipper containing transcription factors; such as cAMP responsive element binding protein (CREB) and MYC; and thus may play a regulatory role in PKA or retinoic acid induced neuronal differentiation. Alternatively spliced transcript variants encoding different proteins have been described.

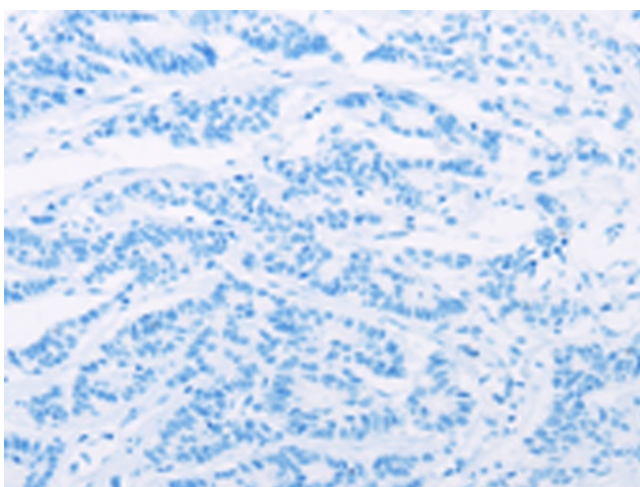


[View online »](#)

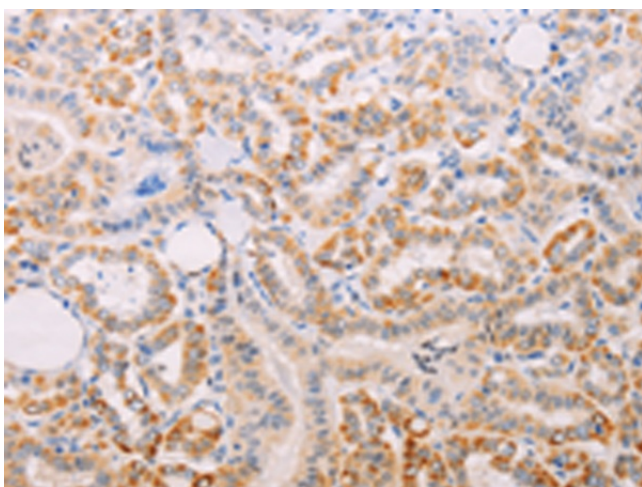
**Synonyms:** DLK; MEKK12; MUK; ZPK; ZPKP1  
**Protein Families:** Druggable Genome, Protein Kinase  
**Protein Pathways:** MAPK signaling pathway

**Product images:**

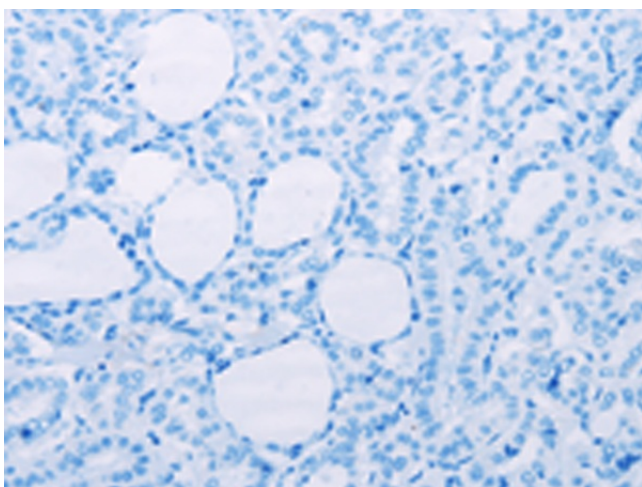
Immunohistochemistry of paraffin-embedded Human colon cancer tissue using [TA324095] (MAP3K12 Antibody) at dilution 1/30 (Original magnification:  $\times 200$ )



Immunohistochemistry of paraffin-embedded Human colon cancer tissue using [TA324095] (MAP3K12 Antibody) at dilution 1/30, treated with fusion protein. (Original magnification:  $\times 200$ )



Immunohistochemistry of paraffin-embedded Human thyroid cancer tissue using [TA324095] (MAP3K12 Antibody) at dilution 1/30 (Original magnification:  $\times 200$ )



Immunohistochemistry of paraffin-embedded Human thyroid cancer tissue using [TA324095] (MAP3K12 Antibody) at dilution 1/30, treated with fusion protein. (Original magnification:  $\times 200$ )