

Product datasheet for **TA324093S**

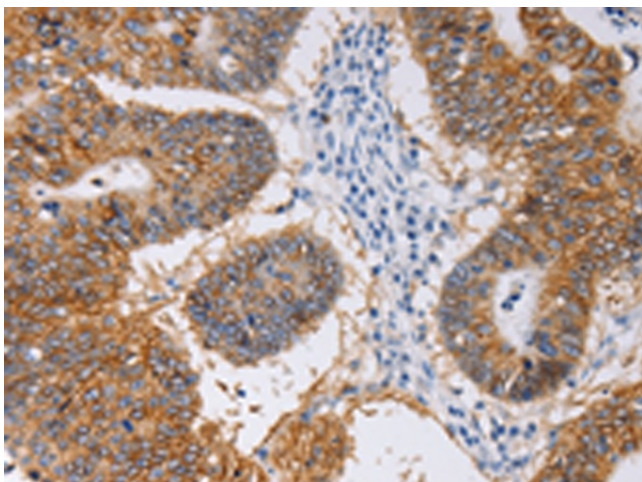
PIWIL1 Rabbit Polyclonal Antibody

Product data:

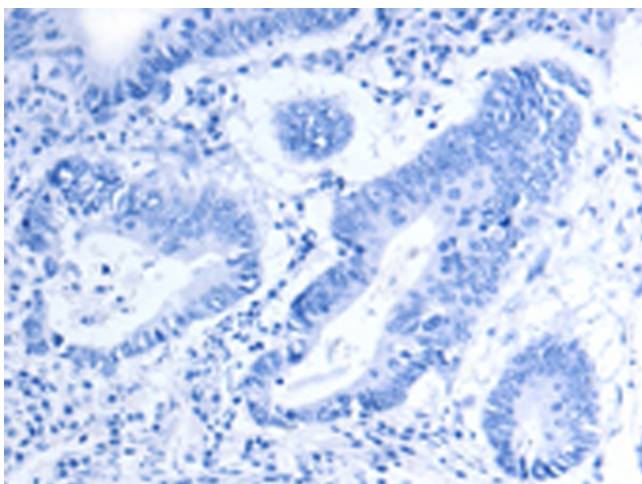
Product Type:	Primary Antibodies
Applications:	IHC
Recommended Dilution:	IHC: 25-100 Positive control: Human colon cancer Predicted cell location: Cytoplasm
Reactivity:	Human, Mouse
Host:	Rabbit
Isotype:	IgG
Clonality:	Polyclonal
Immunogen:	Fusion protein corresponding to a region derived from 555-847 amino acids of human piwi-like RNA-mediated gene silencing 1
Formulation:	PBS pH7.3, 0.05% NaN ₃ , 50% glycerol
Purification:	Antigen affinity purification
Conjugation:	Unconjugated
Storage:	Store at -20°C as received.
Stability:	Stable for 12 months from date of receipt.
Gene Name:	piwi like RNA-mediated gene silencing 1
Database Link:	NP_004755 Entrez Gene 57749 Mouse Entrez Gene 9271 Human Q96J94
Background:	This gene encodes a member of the PIWI subfamily of Argonaute proteins; evolutionarily conserved proteins containing both PAZ and Piwi motifs that play important roles in stem cell self-renewal; RNA silencing; and translational regulation in diverse organisms. The encoded protein may play a role as an intrinsic regulator of the self-renewal capacity of germline and hematopoietic stem cells. Alternatively spliced transcript variants encoding different isoforms have been found for this gene.
Synonyms:	CT80.1; HIWI; MIWI; PIWI
Protein Pathways:	Dorso-ventral axis formation



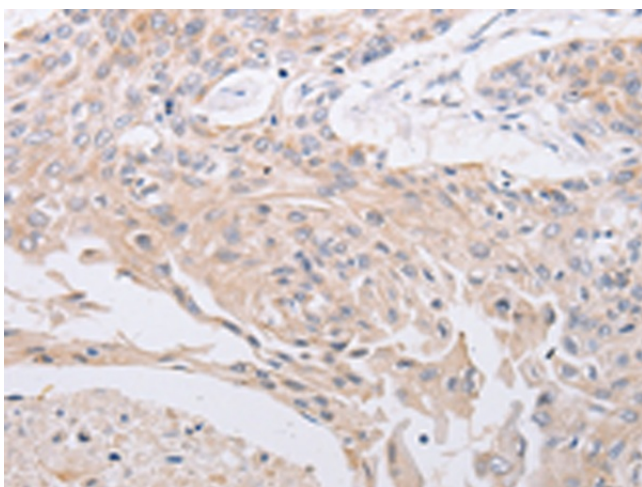
[View online »](#)

Product images:

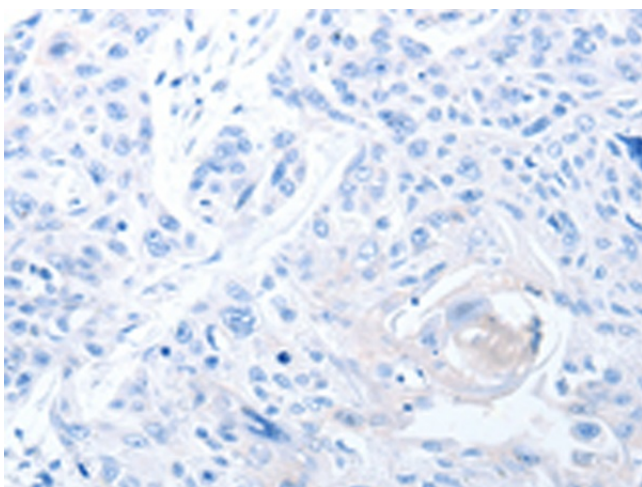
Immunohistochemistry of paraffin-embedded Human colon cancer tissue using [TA324093] (PIWIL1 Antibody) at dilution 1/30 (Original magnification: $\times 200$)



Immunohistochemistry of paraffin-embedded Human colon cancer tissue using [TA324093] (PIWIL1 Antibody) at dilution 1/30, treated with fusion protein. (Original magnification: $\times 200$)



Immunohistochemistry of paraffin-embedded Human esophagus cancer tissue using [TA324093] (PIWIL1 Antibody) at dilution 1/30 (Original magnification: $\times 200$)



Immunohistochemistry of paraffin-embedded Human esophagus cancer tissue using [TA324093] (PIWIL1 Antibody) at dilution 1/30, treated with fusion protein. (Original magnification: $\times 200$)