

Product datasheet for **TA324091**

CD22 Rabbit Polyclonal Antibody

Product data:

Product Type:	Primary Antibodies
Applications:	WB
Recommended Dilution:	WB: 1:500-1000
Reactivity:	Human
Host:	Rabbit
Isotype:	IgG
Clonality:	Polyclonal
Immunogen:	Peptide sequence around aa.839~843 (N-V-D-Y-V) derived from Human CD22.
Formulation:	PBS pH7.3, 0.05% NaN ₃ , 50% glycerol
Concentration:	lot specific
Purification:	Antigen affinity purification
Conjugation:	Unconjugated
Storage:	Store at -20°C as received.
Stability:	Stable for 12 months from date of receipt.
Predicted Protein Size:	140 kDa
Gene Name:	CD22 molecule
Database Link:	NP_001172028 Entrez Gene 933 Human P20273

Background: Mediates B-cell B-cell interactions. May be involved in the localization of B-cells in lymphoid tissues. Binds sialylated glycoproteins; one of which is CD45. Preferentially binds to alpha-2,6-linked sialic acid. The sialic acid recognition site can be masked by cis interactions with sialic acids on the same cell surface. Upon ligand induced tyrosine phosphorylation in the immune response seems to be involved in regulation of B-cell antigen receptor signaling. Plays a role in positive regulation through interaction with Src family tyrosine kinases and may also act as an inhibitory receptor by recruiting cytoplasmic phosphatases via their SH2 domains that block signal transduction through dephosphorylation of signaling molecules.

Synonyms: SIGLEC-2; SIGLEC2

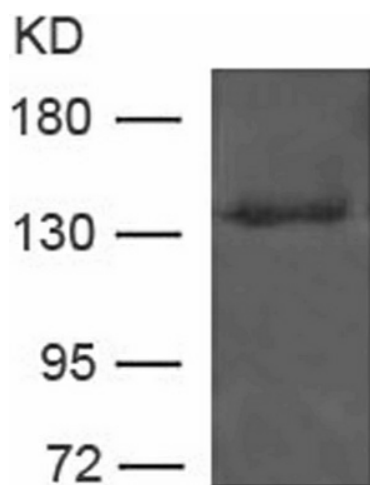


[View online »](#)

Protein Families: Druggable Genome, Transmembrane

Protein Pathways: B cell receptor signaling pathway, Cell adhesion molecules (CAMs), Hematopoietic cell lineage

Product images:



Predicted band size: 140 kDa. Positive control: Raji cells lysate. Recommended dilution: 1/ 500-1000. (Gel: 8%SDS-PAGE Lysate: 30 ug Primary antibody: 1/500 dilution Secondary antibody: Goat anti Rabbit IgG - H&L (HRP) at 1/10000 dilution Exposure time: 1 minute)