

## Product datasheet for **TA324090**

### ENO3 Rabbit Polyclonal Antibody

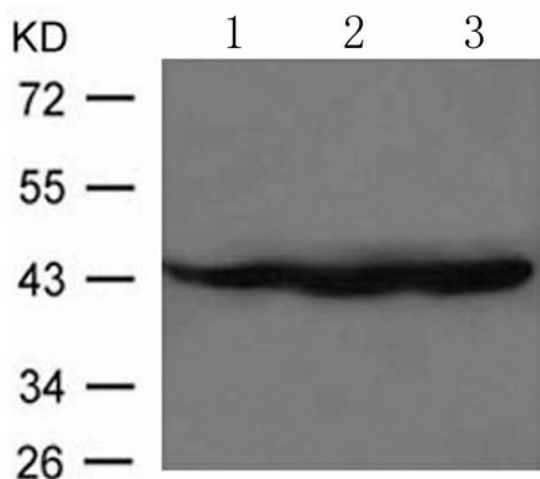
#### Product data:

Product Type:	Primary Antibodies
Applications:	WB
Recommended Dilution:	WB: 1:500-1000
Reactivity:	Human, Mouse, Rat
Host:	Rabbit
Isotype:	IgG
Clonality:	Polyclonal
Immunogen:	Peptide sequence around aa.49~53(L-R-D-G-D) derived from Human $\beta$ -Enolase(ENO-3).
Formulation:	PBS pH7.3, 0.05% NaN <sub>3</sub> , 50% glycerol
Concentration:	lot specific
Purification:	Antigen affinity purification
Conjugation:	Unconjugated
Storage:	Store at -20°C as received.
Stability:	Stable for 12 months from date of receipt.
Predicted Protein Size:	47 kDa
Gene Name:	enolase 3
Database Link:	<a href="#">NP_001180432</a> <a href="#">Entrez Gene 13808 MouseEntrez Gene 25438 RatEntrez Gene 2027 Human P13929</a>
Background:	This gene encodes one of the three enolase isoenzymes found in mammals. This isoenzyme is found in skeletal muscle cells in the adult where it may play a role in muscle development and regeneration. A switch from alpha enolase to beta enolase occurs in muscle tissue during development in rodents. Mutations in this gene have been associated with glycogen storage disease. Alternatively spliced transcript variants encoding different isoforms have been described.
Synonyms:	GSD13; MSE
Protein Pathways:	Glycolysis / Gluconeogenesis, Metabolic pathways, RNA degradation



[View online »](#)

## Product images:



Predicted band size: 47 kDa. Positive control: 3T3, HepG2 and C2C12 cells lysate. Recommended dilution: 1/ 500-1000. (Gel: 10%SDS-PAGE Lane 1, 2, 3: 3T3, HepG2 and C2C12 cells lysate Lysates: 30 ug per lane Primary antibody: 1/500 dilution Secondary antibody: Goat anti Rabbit IgG - H&L (HRP) at 1/10000 dilution Exposure time: 1 minute)