

Product datasheet for **TA324087S**

Nck (NCK1) Rabbit Polyclonal Antibody

Product data:

| | |
|-------------------------|---|
| Product Type: | Primary Antibodies |
| Applications: | IHC, WB |
| Recommended Dilution: | WB: 500-2000 WB positive control: Hela cells IHC: 10-50 Positive control: Human lung cancer Predicted cell location: Cytoplasm |
| Reactivity: | Human, Mouse |
| Host: | Rabbit |
| Isotype: | IgG |
| Clonality: | Polyclonal |
| Immunogen: | Fusion protein corresponding to a C terminal 300 amino acids of human NCK adaptor protein 1 |
| Formulation: | PBS pH7.3, 0.05% NaN ₃ , 50% glycerol |
| Purification: | Antigen affinity purification |
| Conjugation: | Unconjugated |
| Storage: | Store at -20°C as received. |
| Stability: | Stable for 12 months from date of receipt. |
| Predicted Protein Size: | 43 kDa |
| Gene Name: | NCK adaptor protein 1 |
| Database Link: | NP_001177725 Entrez Gene 17973 Mouse Entrez Gene 4690 Human P16333 |
| Background: | The protein encoded by this gene is one of the signaling and transforming proteins containing Src homology 2 and 3 (SH2 and SH3) domains. It is located in the cytoplasm and is an adaptor protein involved in transducing signals from receptor tyrosine kinases to downstream signal recipients such as RAS. Alternatively spliced transcript variants encoding different isoforms have been found. |



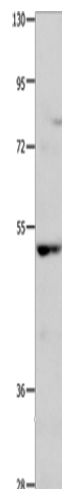
[View online »](#)

Synonyms: NCK; nck-1; NCKalpha

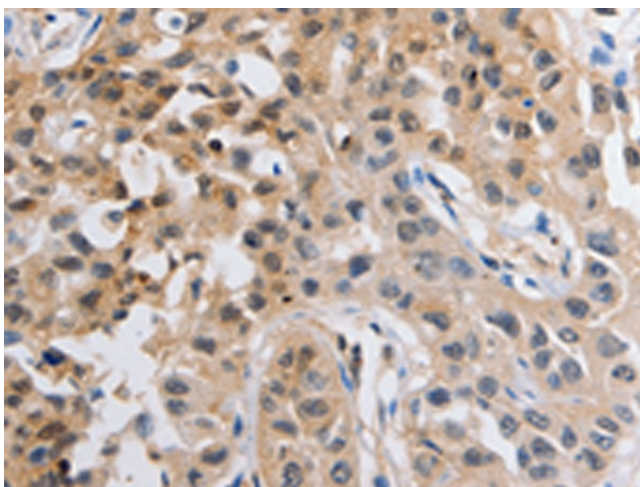
Protein Families: Druggable Genome

Protein Pathways: Axon guidance, ErbB signaling pathway, Pathogenic Escherichia coli infection, T cell receptor signaling pathway

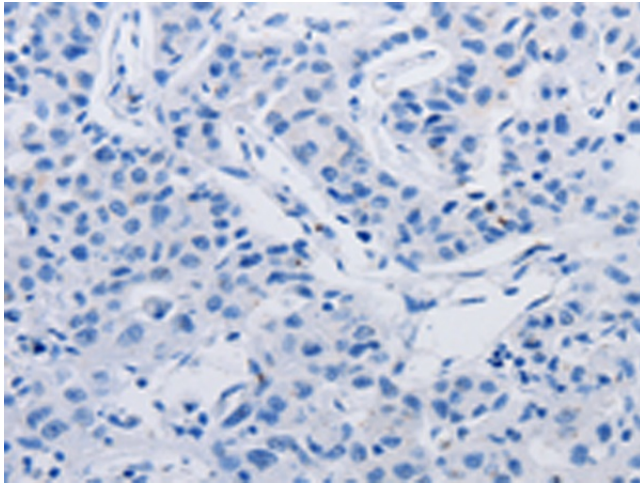
Product images:



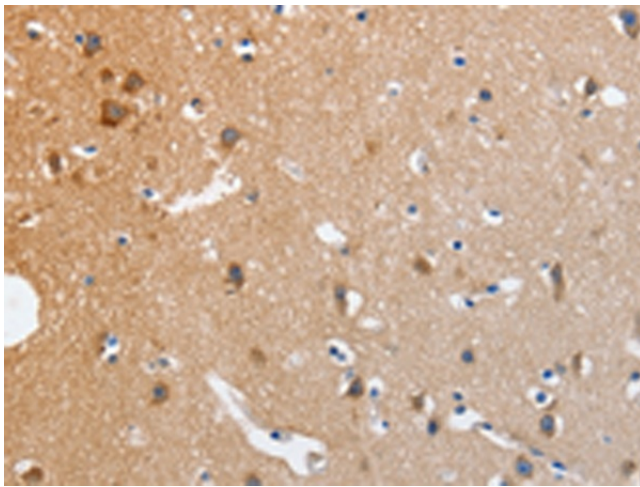
Gel: 10%SDS-PAGE
Lysate: 40 μ g
Lane: HeLa cells
Primary antibody: [TA324087] (NCK1 Antibody) at dilution 1/350
Secondary antibody: Goat anti rabbit IgG at 1/8000 dilution
Exposure time: 1 minute



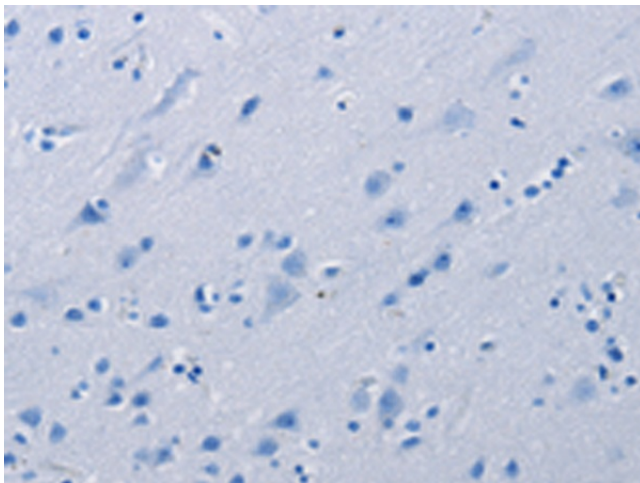
Immunohistochemistry of paraffin-embedded Human lung cancer tissue using [TA324087] (NCK1 Antibody) at dilution 1/20 (Original magnification: \times 200)



Immunohistochemistry of paraffin-embedded Human lung cancer tissue using [TA324087] (NCK1 Antibody) at dilution 1/20, treated with fusion protein. (Original magnification: ×200)



Immunohistochemistry of paraffin-embedded Human brain tissue using [TA324087] (NCK1 Antibody) at dilution 1/20 (Original magnification: ×200)



Immunohistochemistry of paraffin-embedded Human brain tissue using [TA324087] (NCK1 Antibody) at dilution 1/20, treated with fusion protein. (Original magnification: ×200)