

Product datasheet for **TA324085**

AKR1D1 Rabbit Polyclonal Antibody

Product data:

Product Type:	Primary Antibodies
Applications:	IHC, WB
Recommended Dilution:	WB: 500-2000 WB positive control: Human liver cancer tissue IHC: 25-100 Positive control: Human liver cancer Predicted cell location: Cytoplasm
Reactivity:	Human, Mouse, Rat
Host:	Rabbit
Isotype:	IgG
Clonality:	Polyclonal
Immunogen:	Full length fusion protein
Formulation:	PBS pH7.3, 0.05% NaN ₃ , 50% glycerol
Concentration:	lot specific
Purification:	Antigen affinity purification
Conjugation:	Unconjugated
Storage:	Store at -20°C as received.
Stability:	Stable for 12 months from date of receipt.
Predicted Protein Size:	37 kDa
Gene Name:	aldo-keto reductase family 1, member D1
Database Link:	NP_001177835 Entrez Gene 192242 Rat Entrez Gene 208665 Mouse Entrez Gene 6718 Human P51857

Background: The enzyme encoded by this gene is responsible for the catalysis of the 5-beta-reduction of bile acid intermediates and steroid hormones carrying a delta(4)-3-one structure. Deficiency of this enzyme may contribute to hepatic dysfunction. Three transcript variants encoding different isoforms have been found for this gene. Other variants may be present, but their full-length natures have not been determined yet.



[View online >](#)

Synonyms: 3o5bred; CBAS2; SRD5B1

Protein Families: Druggable Genome

Protein Pathways: Androgen and estrogen metabolism, C21-Steroid hormone metabolism, Metabolic pathways, Primary bile acid biosynthesis

Product images:



Gel: 8%SDS-PAGE

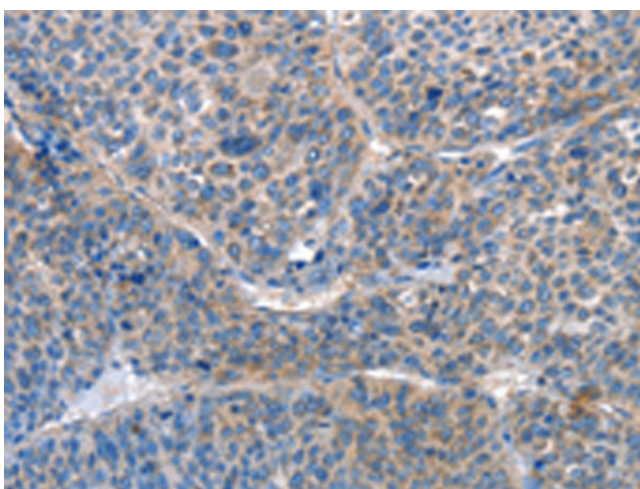
Lysate: 80 μ g

Lane: Human liver cancer tissue

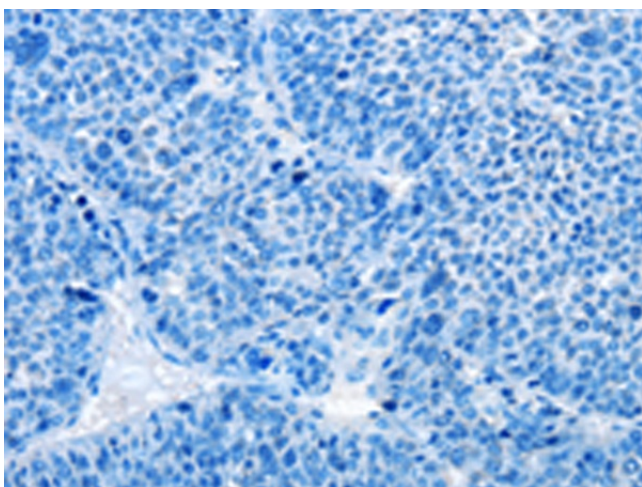
Primary antibody: TA324085 (AKR1D1 Antibody) at dilution 1/450

Secondary antibody: Goat anti rabbit IgG at 1/8000 dilution

Exposure time: 1 minute



Immunohistochemistry of paraffin-embedded Human liver cancer tissue using TA324085 (AKR1D1 Antibody) at dilution 1/25 (Original magnification: \times 200)



Immunohistochemistry of paraffin-embedded Human liver cancer tissue using TA324085 (AKR1D1 Antibody) at dilution 1/25, treated with fusion protein. (Original magnification: ×200)