

Product datasheet for **TA324077**

Gremlin 1 (GREM1) Rabbit Polyclonal Antibody

Product data:

Product Type:	Primary Antibodies
Applications:	WB
Recommended Dilution:	WB: 500-2000 WB positive control: Mouse testis tissue
Reactivity:	Human, Mouse, Rat
Host:	Rabbit
Isotype:	IgG
Clonality:	Polyclonal
Immunogen:	Fusion protein corresponding to a region derived from 25-184 amino acids of human gremlin 1
Formulation:	PBS pH7.3, 0.05% NaN ₃ , 50% glycerol
Concentration:	lot specific
Purification:	Antigen affinity purification
Conjugation:	Unconjugated
Storage:	Store at -20°C as received.
Stability:	Stable for 12 months from date of receipt.
Predicted Protein Size:	21 kDa
Gene Name:	gremlin 1, DAN family BMP antagonist
Database Link:	NP_001178251 Entrez Gene 23892 Mouse Entrez Gene 50566 Rat Entrez Gene 26585 Human O60565



[View online »](#)

Background:

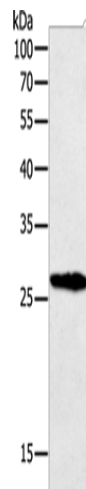
This gene encodes a member of the BMP (bone morphogenetic protein) antagonist family. Like BMPs; BMP antagonists contain cystine knots and typically form homo- and heterodimers. The CAN (cerberus and dan) subfamily of BMP antagonists; to which this gene belongs; is characterized by a C-terminal cystine knot with an eight-membered ring. The antagonistic effect of the secreted glycosylated protein encoded by this gene is likely due to its direct binding to BMP proteins. As an antagonist of BMP; this gene may play a role in regulating organogenesis; body patterning; and tissue differentiation. In mouse; this protein has been shown to relay the sonic hedgehog (SHH) signal from the polarizing region to the apical ectodermal ridge during limb bud outgrowth. Alternatively spliced transcript variants encoding different isoforms have been found for this gene.

Synonyms:

C15DUPq; CKTSF1B1; CRAC1; CRCS4; DAND2; DRM; DUP15q; GREMLIN; HMPS; HMPS1; IHG-2; MPSH; PIG2

Protein Families:

ES Cell Differentiation/IPS, Secreted Protein

Product images:

Gel: 12%SDS-PAGE

Lysate: 40 µg

Lane: Mouse testis tissue

Primary antibody: TA324077 (GREM1 Antibody) at dilution 1/700

Secondary antibody: Goat anti rabbit IgG at 1/8000 dilution

Exposure time: 10 seconds