

## Product datasheet for **TA324076**

### Oct-1 (POU2F1) Rabbit Polyclonal Antibody

#### Product data:

Product Type:	Primary Antibodies
Applications:	IHC, WB
Recommended Dilution:	WB: 200-1000 WB positive control: 293T cells IHC: 25-100 Positive control: Human colon cancer Predicted cell location: cytoplasm, Nucleus
Reactivity:	Human, Mouse
Host:	Rabbit
Isotype:	IgG
Clonality:	Polyclonal
Immunogen:	Fusion protein corresponding to a region derived from 1-290 amino acids of human POU class 2 homeobox 1
Formulation:	PBS pH7.3, 0.05% NaN <sub>3</sub> , 50% glycerol
Concentration:	lot specific
Purification:	Antigen affinity purification
Conjugation:	Unconjugated
Storage:	Store at -20°C as received.
Stability:	Stable for 12 months from date of receipt.
Predicted Protein Size:	76 kDa
Gene Name:	POU class 2 homeobox 1
Database Link:	<a href="#">NP_001185712</a> <a href="#">Entrez Gene 18986 Mouse</a> <a href="#">Entrez Gene 5451 Human</a> <a href="#">P14859</a>
Background:	The OCT1 transcription factor was among the first identified members of the POU transcription factor family. Members of this family contain the POU domain; a 160-amino acid region necessary for DNA binding to the octameric sequence ATGCAAAT.
Synonyms:	oct-1B; OCT1; OTF1



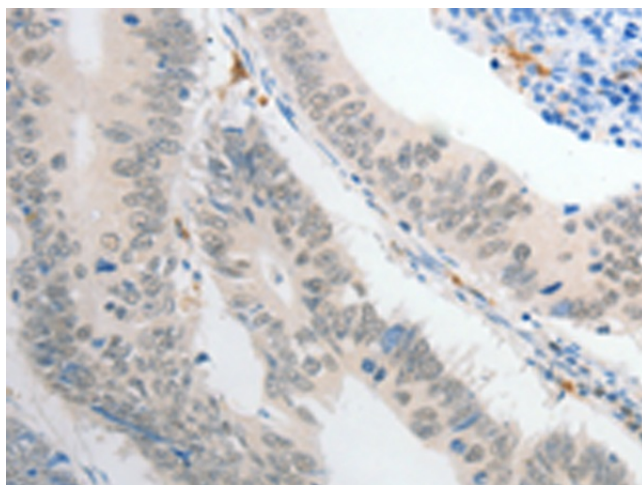
[View online »](#)

Protein Families: Druggable Genome, Transcription Factors

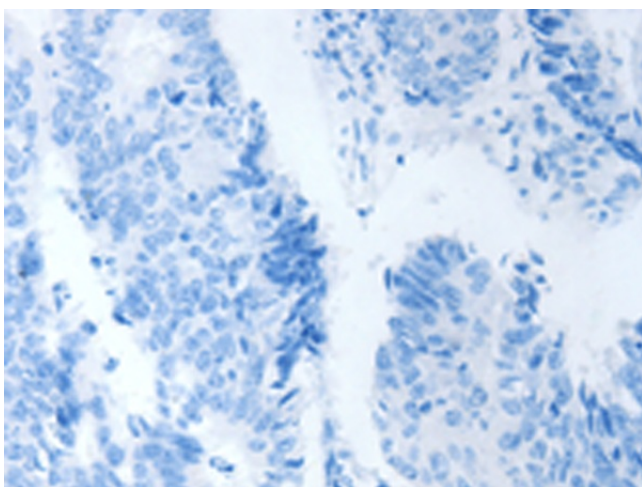
### Product images:



Gel: 8%SDS-PAGE  
Lysate: 40  $\mu$ g  
Lane: 293T cells  
Primary antibody: TA324076 (POU2F1 Antibody)  
at dilution 1/400  
Secondary antibody: Goat anti rabbit IgG at  
1/8000 dilution  
Exposure time: 15 seconds



Immunohistochemistry of paraffin-embedded  
Human colon cancer tissue using TA324076  
(POU2F1 Antibody) at dilution 1/30 (Original  
magnification:  $\times$ 200)



Immunohistochemistry of paraffin-embedded Human colon cancer tissue using TA324076 (POU2F1 Antibody) at dilution 1/30, treated with fusion protein. (Original magnification: ×200)