

Product datasheet for **TA324075S**

Oct-1 (POU2F1) Rabbit Polyclonal Antibody

Product data:

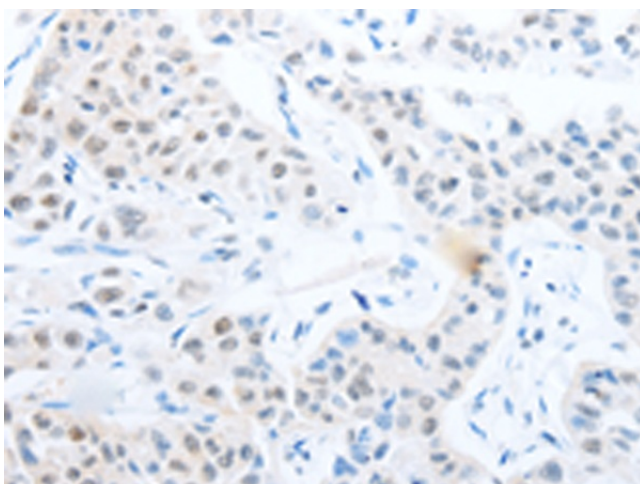
Product Type:	Primary Antibodies
Applications:	IHC, WB
Recommended Dilution:	WB: 200-1000 WB positive control: 231 cells IHC: 15-50 Positive control: Human lung cancer Predicted cell location: cytoplasm, Nucleus
Reactivity:	Human, Mouse
Host:	Rabbit
Isotype:	IgG
Clonality:	Polyclonal
Immunogen:	Fusion protein corresponding to a region derived from 1-290 amino acids of human POU class 2 homeobox 1
Formulation:	PBS pH7.3, 0.05% NaN ₃ , 50% glycerol
Purification:	Antigen affinity purification
Conjugation:	Unconjugated
Storage:	Store at -20°C as received.
Stability:	Stable for 12 months from date of receipt.
Predicted Protein Size:	76 kDa
Gene Name:	POU class 2 homeobox 1
Database Link:	NP_001185712 Entrez Gene 18986 Mouse Entrez Gene 5451 Human P14859
Background:	The OCT1 transcription factor was among the first identified members of the POU transcription factor family. Members of this family contain the POU domain; a 160-amino acid region necessary for DNA binding to the octameric sequence ATGCAAAT.
Synonyms:	oct-1B; OCT1; OTF1
Protein Families:	Druggable Genome, Transcription Factors



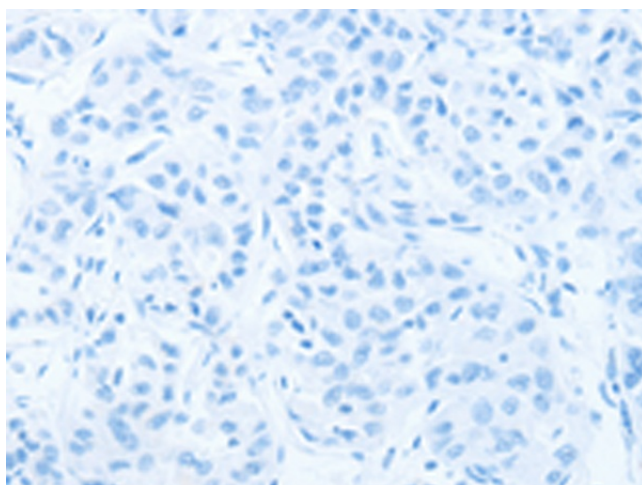
[View online »](#)

Product images:

Gel: 8%SDS-PAGE
Lysate: 40 µg
Lane: 231 cells
Primary antibody: [TA324075] (POU2F1 Antibody) at dilution 1/400
Secondary antibody: Goat anti rabbit IgG at 1/8000 dilution
Exposure time: 50 seconds



Immunohistochemistry of paraffin-embedded Human lung cancer tissue using [TA324075] (POU2F1 Antibody) at dilution 1/25 (Original magnification: ×200)



Immunohistochemistry of paraffin-embedded Human lung cancer tissue using [TA324075] (POU2F1 Antibody) at dilution 1/25, treated with fusion protein. (Original magnification: ×200)