

## Product datasheet for **TA324074**

### beta III Tubulin (TUBB3) Rabbit Polyclonal Antibody

#### Product data:

Product Type:	Primary Antibodies
Applications:	IHC, WB
Recommended Dilution:	WB: 500-2000 WB positive control: Human cerebella tissue, Human cerebrum tissue and Rat brain tissue lysates IHC: 100-300 Positive control: Human colorectal cancer Predicted cell location: Cytoplasm
Reactivity:	Human, Mouse, Rat
Host:	Rabbit
Isotype:	IgG
Clonality:	Polyclonal
Immunogen:	Fusion protein corresponding to a region derived from 57-294 amino acids of Human Tubulin beta-3 chain
Formulation:	PBS pH7.3, 0.05% NaN <sub>3</sub> , 50% glycerol
Concentration:	lot specific
Purification:	Antigen affinity purification
Conjugation:	Unconjugated
Storage:	Store at -20°C as received.
Stability:	Stable for 12 months from date of receipt.
Predicted Protein Size:	50 kDa
Gene Name:	tubulin beta 3 class III
Database Link:	<a href="#">NP_001184110</a> <a href="#">Entrez Gene 22152 Mouse</a> <a href="#">Entrez Gene 246118 Rat</a> <a href="#">Entrez Gene 10381 Human</a> <a href="#">Q13509</a>



[View online »](#)

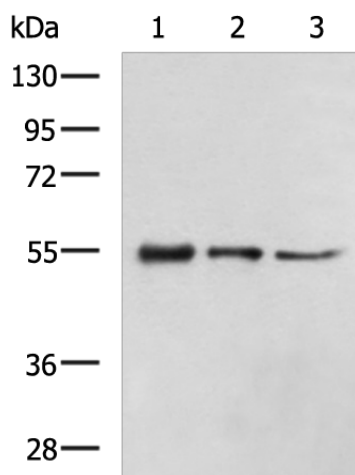
**Background:** This gene encodes a class III member of the beta tubulin protein family. Beta tubulins are one of two core protein families (alpha and beta tubulins) that heterodimerize and assemble to form microtubules. This protein is primarily expressed in neurons and may be involved in neurogenesis and axon guidance and maintenance. Mutations in this gene are the cause of congenital fibrosis of the extraocular muscles type 3. Alternate splicing results in multiple transcript variants. A pseudogene of this gene is found on chromosome 6

**Synonyms:** beta-4; CDCBM; CDCBM1; CFEOM3; CFEOM3A; FEOM3; TUBB4

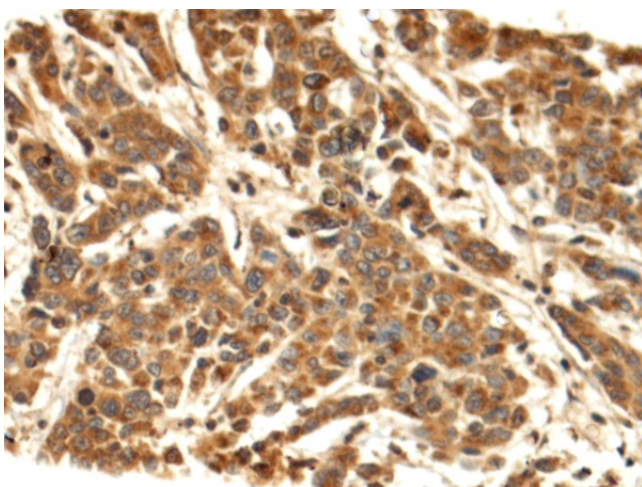
**Protein Families:** Druggable Genome, ES Cell Differentiation/IPS

**Protein Pathways:** Gap junction, Pathogenic Escherichia coli infection

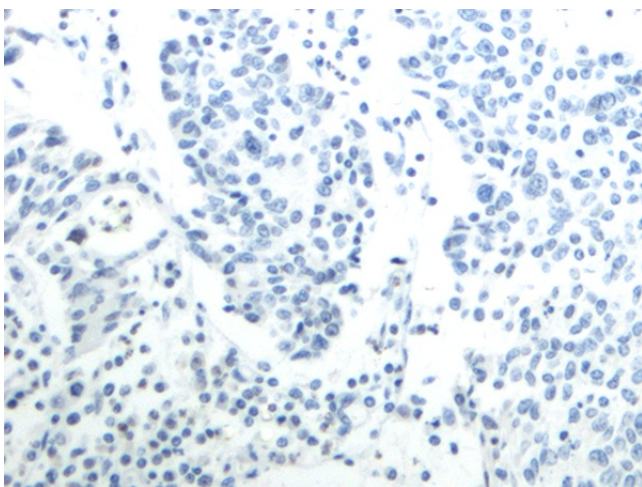
**Product images:**



Gel: 8%SDS-PAGE  
 Lysate: 40 µg  
 Lane 1-3: Human cerebella tissue  
 Human cerebrum tissue and Rat brain tissue  
 lysates  
 Primary antibody: TA324074 (TUBB3 Antibody) at  
 dilution 1/1000  
 Secondary antibody: Goat anti rabbit IgG at  
 1/5000 dilution  
 Exposure time: 30 seconds



Immunohistochemistry of paraffin-embedded  
 Human colorectal cancer tissue using TA324074  
 (TUBB3 Antibody) at dilution 1/80 (Original  
 magnification: x200)



Immunohistochemistry of paraffin-embedded Human colorectal cancer tissue using TA324074 (TUBB3 Antibody) at dilution 1/80, treated with fusion protein. (Original magnification: ×200)