

Product datasheet for **TA324066**

Cadherin like 23 (CDH23) Rabbit Polyclonal Antibody

Product data:

| | |
|-------------------------|--|
| Product Type: | Primary Antibodies |
| Applications: | IHC, WB |
| Recommended Dilution: | WB: 500-2000 WB positive control: Mouse brain tissue IHC: 100-300 Positive control: Human lung cancer Predicted cell location: Cytoplasm, Nucleus |
| Reactivity: | Human, Mouse, Rat |
| Host: | Rabbit |
| Isotype: | IgG |
| Clonality: | Polyclonal |
| Immunogen: | Fusion protein corresponding to C terminal 250 amino acids of human cadherin-related 23cadherin-related 23 |
| Formulation: | PBS pH7.3, 0.05% NaN ₃ , 50% glycerol |
| Concentration: | lot specific |
| Purification: | Antigen affinity purification |
| Conjugation: | Unconjugated |
| Storage: | Store at -20°C as received. |
| Stability: | Stable for 12 months from date of receipt. |
| Predicted Protein Size: | 45 kDa |
| Gene Name: | cadherin-related 23 |
| Database Link: | NP_001165401 Entrez Gene 22295 Mouse Entrez Gene 114102 Rat Entrez Gene 64072 Human Q9H251 |



[View online »](#)

Background:

This gene is a member of the cadherin superfamily; whose genes encode calcium dependent cell-cell adhesion glycoproteins. The encoded protein is thought to be involved in stereocilia organization and hair bundle formation. The gene is located in a region containing the human deafness loci DFNB12 and USH1D. Usher syndrome 1D and nonsyndromic autosomal recessive deafness DFNB12 are caused by allelic mutations of this cadherin-like gene. Alternative splice variants encoding different isoforms have been described.

Synonyms:

CDHR23; USH1D

Protein Families:

Transmembrane

Product images:

Gel: 10%SDS-PAGE

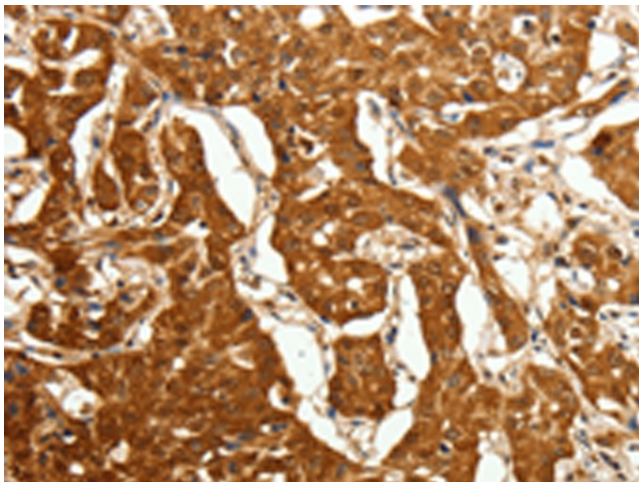
Lysate: 40 µg

Lane: Mouse brain tissue

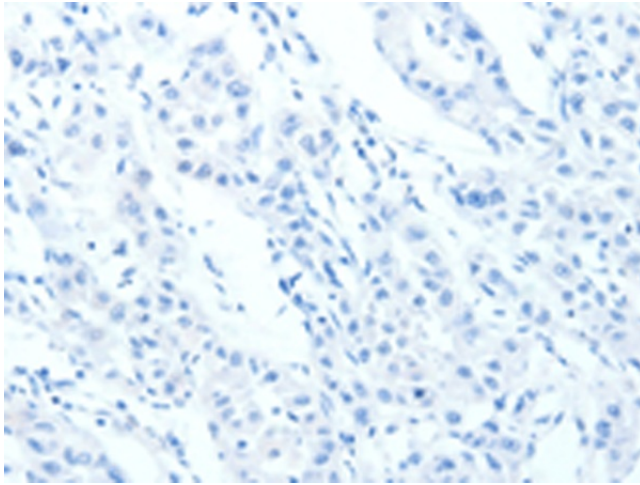
Primary antibody: TA324066 (CDH23 Antibody) at dilution 1/1050

Secondary antibody: Goat anti rabbit IgG at 1/8000 dilution

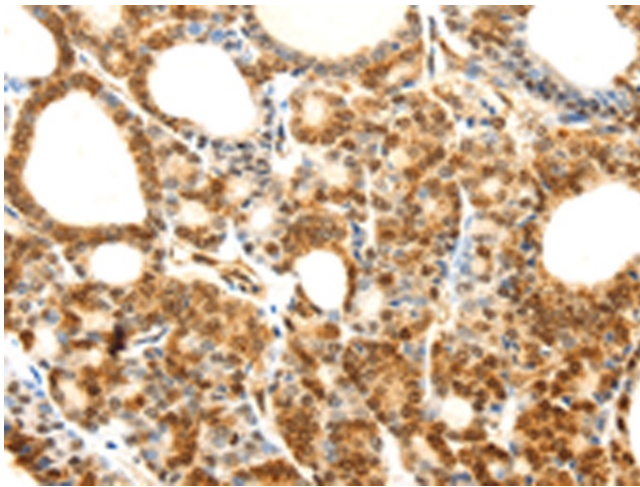
Exposure time: 20 seconds



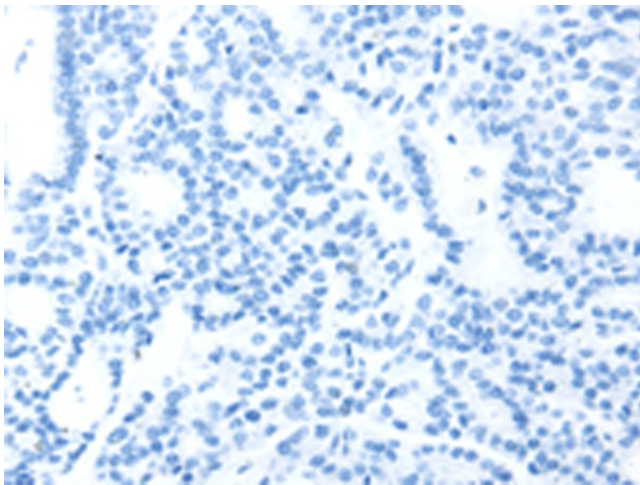
Immunohistochemistry of paraffin-embedded Human lung cancer tissue using TA324066 (CDH23 Antibody) at dilution 1/80 (Original magnification: ×200)



Immunohistochemistry of paraffin-embedded Human lung cancer tissue using TA324066 (CDH23 Antibody) at dilution 1/80, treated with fusion protein. (Original magnification: $\times 200$)



Immunohistochemistry of paraffin-embedded Human thyroid cancer tissue using TA324066 (CDH23 Antibody) at dilution 1/80 (Original magnification: $\times 200$)



Immunohistochemistry of paraffin-embedded Human thyroid cancer tissue using TA324066 (CDH23 Antibody) at dilution 1/80, treated with fusion protein. (Original magnification: $\times 200$)