

Product datasheet for **TA324065**

AFF2 Rabbit Polyclonal Antibody

Product data:

Product Type:	Primary Antibodies
Applications:	IHC, WB
Recommended Dilution:	WB: 200-1000 WB positive control: Human fetal lung tissue IHC: 25-100 Positive control: Human liver cancer Predicted cell location: Cytoplasm, Nucleus
Reactivity:	Human, Mouse
Host:	Rabbit
Isotype:	IgG
Clonality:	Polyclonal
Immunogen:	Synthetic peptide corresponding to a region derived from 2-17 amino acids of human AF4/FMR2 family, member 2
Formulation:	PBS pH7.3, 0.05% NaN ₃ , 50% glycerol
Concentration:	lot specific
Purification:	Antigen affinity purification
Conjugation:	Unconjugated
Storage:	Store at -20°C as received.
Stability:	Stable for 12 months from date of receipt.
Predicted Protein Size:	145 kDa
Gene Name:	AF4/FMR2 family member 2
Database Link:	NP_001162593 Entrez Gene 14266 Mouse Entrez Gene 2334 Human P51816



[View online »](#)

Background:

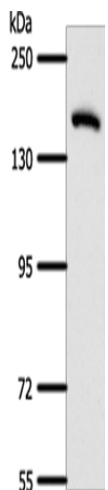
This gene encodes a putative transcriptional activator that is a member of the AF4/FMR2 gene family. This gene is associated with the folate-sensitive fragile X E locus on chromosome X. A repeat polymorphism in the fragile X E locus results in silencing of this gene causing Fragile X E syndrome. Fragile X E syndrome is a form of nonsyndromic X-linked mental retardation. Alternate splicing results in multiple transcript variants.

Synonyms:

FMR2; FMR2P; FRAXE; MRX2; OX19

Protein Families:

Druggable Genome

Product images:

Gel: 8%SDS-PAGE

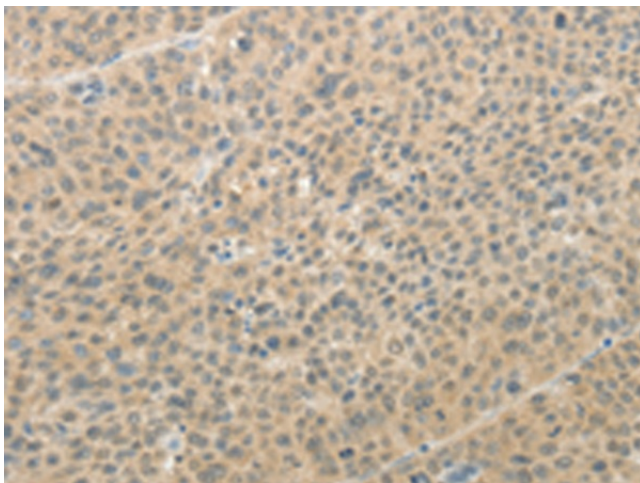
Lysate: 40 µg

Lane: Human fetal lung tissue

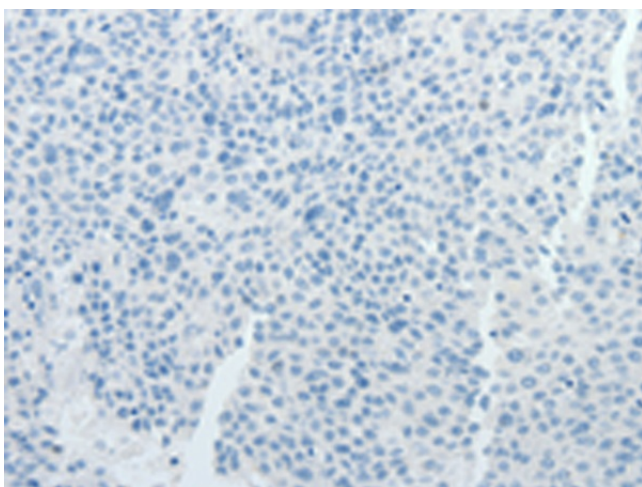
Primary antibody: TA324065 (AFF2 Antibody) at dilution 1/400

Secondary antibody: Goat anti rabbit IgG at 1/8000 dilution

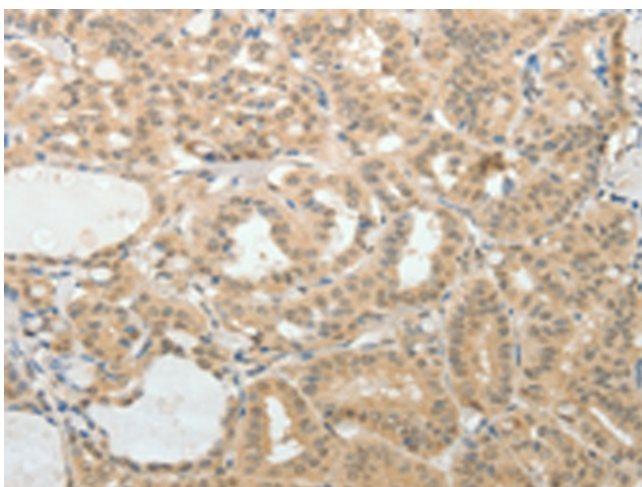
Exposure time: 1 minute



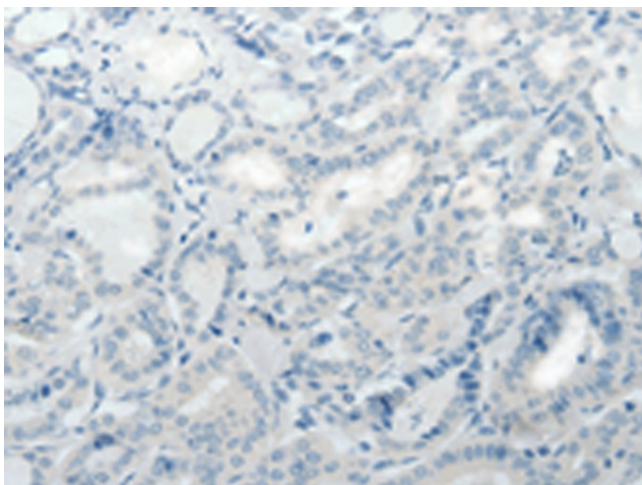
Immunohistochemistry of paraffin-embedded Human liver cancer tissue using TA324065 (AFF2 Antibody) at dilution 1/25 (Original magnification: ×200)



Immunohistochemistry of paraffin-embedded Human liver cancer tissue using TA324065 (AFF2 Antibody) at dilution 1/25, treated with synthetic peptide. (Original magnification: $\times 200$)



Immunohistochemistry of paraffin-embedded Human thyroid cancer tissue using TA324065 (AFF2 Antibody) at dilution 1/25 (Original magnification: $\times 200$)



Immunohistochemistry of paraffin-embedded Human thyroid cancer tissue using TA324065 (AFF2 Antibody) at dilution 1/25, treated with synthetic peptide. (Original magnification: $\times 200$)