

## Product datasheet for **TA324058S**

### **PGBD1 Rabbit Polyclonal Antibody**

#### **Product data:**

|                       |   |
|-----------------------|---|
| Product Type:         | Primary Antibodies  |
| Applications:         | IHC   |
| Recommended Dilution: | IHC: 25-100<br>Positive control: Human gastric cancer<br>Predicted cell location: Cytoplasm                                       |
| Reactivity:           | Human   |
| Host:                 | Rabbit  |
| Isotype:              | IgG   |
| Clonality:            | Polyclonal  |
| Immunogen:            | Fusion protein corresponding to a region derived from C terminal 250 amino acids of human piggyBac transposable element derived 1 |
| Formulation:          | PBS pH7.3, 0.05% NaN <sub>3</sub> , 50% glycerol  |
| Purification:         | Antigen affinity purification   |
| Conjugation:          | Unconjugated  |
| Storage:              | Store at -20°C as received.   |
| Stability:            | Stable for 12 months from date of receipt.  |
| Gene Name:            | piggyBac transposable element derived 1   |
| Database Link:        | <a href="#">NP_115896</a><br><a href="#">Entrez Gene 84547 Human</a><br><a href="#">Q96JS3</a>                                    |

**Background:** The piggyBac family of proteins; found in diverse animals; are transposases related to the transposase of the canonical piggyBac transposon from the moth; *Trichoplusia ni*. This family also includes genes in several genomes; including human; that appear to have been derived from the piggyBac transposons. This gene belongs to the subfamily of piggyBac transposable element derived (PGBD) genes. The PGBD proteins appear to be novel; with no obvious relationship to other transposases; or other known protein families. This gene product is specifically expressed in the brain; however; its exact function is not known. Alternative splicing results in multiple transcript variants encoding the same protein.

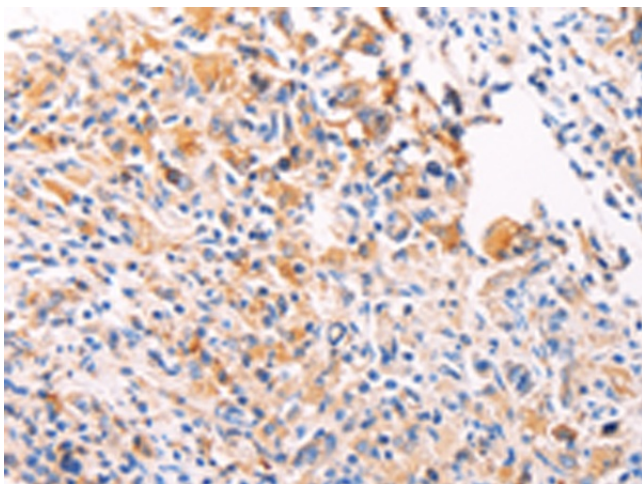


[View online »](#)

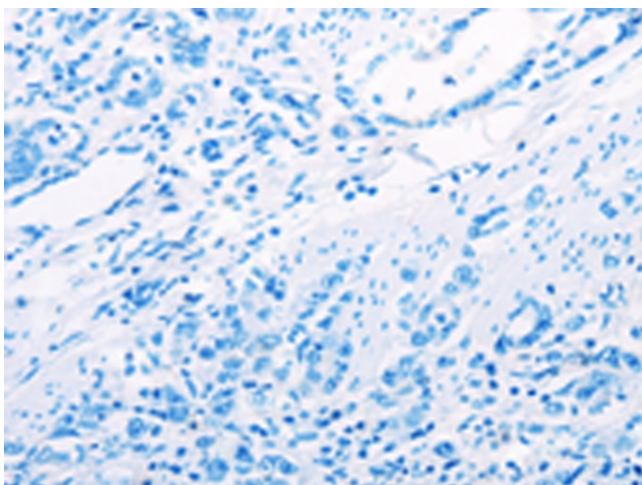
Synonyms: dj874C20.4; HUCEP-4; SCAND4

Protein Families: Druggable Genome, Transcription Factors

### Product images:



Immunohistochemistry of paraffin-embedded Human gastric cancer tissue using [TA324058] (PGBD1 Antibody) at dilution 1/20 (Original magnification:  $\times 200$ )



Immunohistochemistry of paraffin-embedded Human gastric cancer tissue using [TA324058] (PGBD1 Antibody) at dilution 1/20, treated with fusion protein. (Original magnification:  $\times 200$ )