

## Product datasheet for **TA324051**

### PRMT7 Rabbit Polyclonal Antibody

#### Product data:

|                         |   |
|-------------------------|---|
| Product Type:           | Primary Antibodies  |
| Applications:           | WB  |
| Recommended Dilution:   | WB: 500-2000<br>WB positive control: Human liver cancer tissue  |
| Reactivity:             | Human   |
| Host:                   | Rabbit  |
| Isotype:                | IgG   |
| Clonality:              | Polyclonal  |
| Immunogen:              | Fusion protein corresponding to a region derived from 526-692 amino acids of human protein arginine methyltransferase 7 |
| Formulation:            | PBS pH7.3, 0.05% NaN <sub>3</sub> , 50% glycerol  |
| Concentration:          | lot specific  |
| Purification:           | Antigen affinity purification   |
| Conjugation:            | Unconjugated  |
| Storage:                | Store at -20°C as received.   |
| Stability:              | Stable for 12 months from date of receipt.  |
| Predicted Protein Size: | 78 kDa  |
| Gene Name:              | protein arginine methyltransferase 7  |
| Database Link:          | <a href="#">NP_001171753</a><br><a href="#">Entrez Gene 54496 Human</a><br><a href="#">Q9NVM4</a>                       |



[View online »](#)

**Background:**

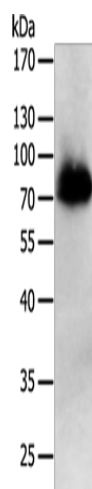
Protein arginine methyltransferase 7 is a protein that in humans is encoded by the PRMT7 gene. Arginine methylation is an apparently irreversible protein modification catalyzed by arginine methyltransferases; such as PMT7; using S-adenosylmethionine (AdoMet) as the methyl donor. Arginine methylation is implicated in signal transduction; RNA transport; and RNA splicing. May be involved in etoposide-induced cytotoxicity; a chemotherapeutic agent frequently used for testicular cancer and small-cell lung cancer that can cause cytotoxicity in the treatment of other cancers. Down-regulation confers increased sensitivity to the Top1 inhibitor camptothecin (CPT).

**Synonyms:**

FLJ10640; KIAA1933

**Protein Families:**

Druggable Genome

**Product images:**

Gel: 10%SDS-PAGE

Lysate: 50 µg

Lane: Human liver cancer tissue

Primary antibody: TA324051 (PRMT7 Antibody) at dilution 1/500

Secondary antibody: Goat anti rabbit IgG at 1/8000 dilution

Exposure time: 5 minutes