

## Product datasheet for **TA324050**

### Cortactin (CTTN) Rabbit Polyclonal Antibody

#### Product data:

Product Type:	Primary Antibodies
Applications:	IHC, WB
Recommended Dilution:	WB: 1:500-1000, IHC: 1:50-100
Reactivity:	Human, Mouse, Rat
Host:	Rabbit
Isotype:	IgG
Clonality:	Polyclonal
Immunogen:	Peptide sequence around aa.464~468 (P-V-Y-E-T) derived from Human CORTACTIN.
Formulation:	PBS pH7.3, 0.05% NaN <sub>3</sub> , 50% glycerol
Concentration:	lot specific
Purification:	Antigen affinity purification
Conjugation:	Unconjugated
Storage:	Store at -20°C as received.
Stability:	Stable for 12 months from date of receipt.
Predicted Protein Size:	85 kDa
Gene Name:	cortactin
Database Link:	<a href="#">NP_001171669</a> <a href="#">Entrez Gene 13043 MouseEntrez Gene 60465 RatEntrez Gene 2017 Human Q14247</a>

**Background:** Cortactin is overexpressed in breast cancer and squamous cell carcinomas of the head and neck. The encoded protein is localized in the cytoplasm and in areas of the cell-substratum contacts. This gene has two roles: (1) regulating the interactions between components of adherens-type junctions and (2) organizing the cytoskeleton and cell adhesion structures of epithelia and carcinoma cells. During apoptosis, the encoded protein is degraded in a caspase-dependent manner. The aberrant regulation of this gene contributes to tumor cell invasion and metastasis. Two splice variants that encode different isoforms have been identified for this gene.

**Synonyms:** EMS1

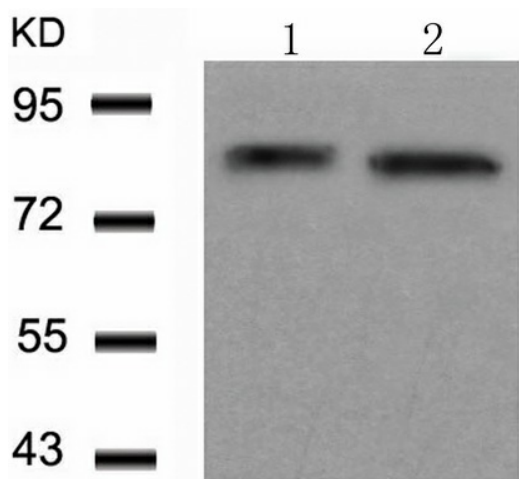


[View online »](#)

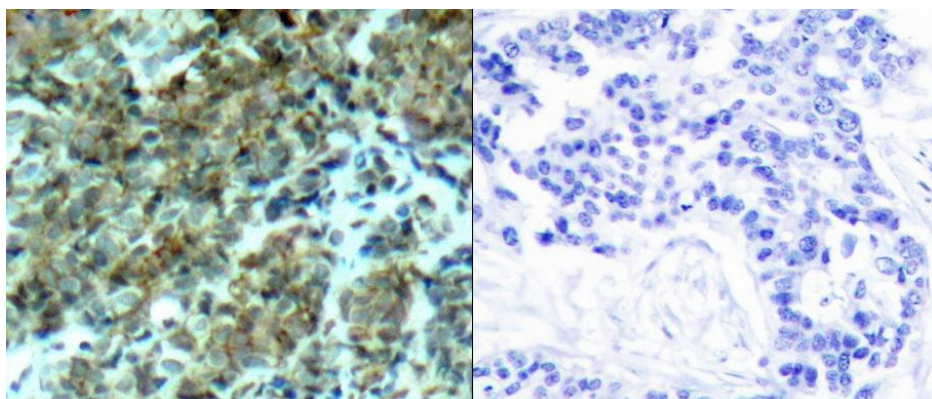
**Protein Families:** Druggable Genome

**Protein Pathways:** Pathogenic Escherichia coli infection, Tight junction

**Product images:**



Predicted band size: 85 kDa. Positive control: 3T3 and C2C12 cells lysate. Recommended dilution: 1/ 500-1000. (Gel: 8%SDS-PAGE Lane 1, 2: 3T3 and C2C12 cells Lysates: 30 ug per lane Primary antibody: 1/500 dilution Secondary antibody: Goat anti Rabbit IgG - H&L (HRP) at 1/10000 dilution Exposure time: 1 minute)



Predicted cell location: Cytoplasm. Positive control: Human breast carcinoma tissue. Recommended dilution: 1/ 50-100 The image on the left is immunohistochemistry of paraffin-embedded human breast carcinoma tissue using CTTN (Ab-466) antibody at dilution 1/50, on the right is treated with the synthetic peptide. (Original magnification: x200)