

## Product datasheet for **TA324046**

### IL1RAP Rabbit Polyclonal Antibody

#### Product data:

Product Type:	Primary Antibodies
Applications:	IHC, WB
Recommended Dilution:	WB: 500-2000 WB positive control: Hela cell, Mouse heart tissue, Human cerebella tissue, Human cerebrum tissue lysates IHC: 50-200 Positive control: Human gastric cancer Predicted cell location: Secreted
Reactivity:	Human, Mouse, Rat
Host:	Rabbit
Isotype:	IgG
Clonality:	Polyclonal
Immunogen:	Fusion protein corresponding to a region derived from 22-356 amino acids of Human Interleukin-1 receptor accessory protein
Formulation:	PBS pH7.3, 0.05% NaN <sub>3</sub> , 50% glycerol
Concentration:	lot specific
Purification:	Antigen affinity purification
Conjugation:	Unconjugated
Storage:	Store at -20°C as received.
Stability:	Stable for 12 months from date of receipt.
Gene Name:	interleukin 1 receptor accessory protein
Database Link:	<a href="#">NP_608273</a> <a href="#">Entrez Gene 16180 Mouse</a> <a href="#">Entrez Gene 25466 Rat</a> <a href="#">Entrez Gene 3556 Human</a> <a href="#">Q9NPH3</a>



[View online »](#)

**Background:**

Interleukin 1 induces synthesis of acute phase and proinflammatory proteins during infection; tissue damage; or stress; by forming a complex at the cell membrane with an interleukin 1 receptor and an accessory protein. This gene encodes the interleukin 1 receptor accessory protein. The protein is a necessary part of the interleukin 1 receptor complex which initiates signalling events that result in the activation of interleukin 1-responsive genes. Alternative splicing of this gene results in two transcript variants encoding two different isoforms; one membrane-bound and one soluble. The ratio of soluble to membrane-bound forms increases during acute-phase induction or stress.

**Synonyms:**

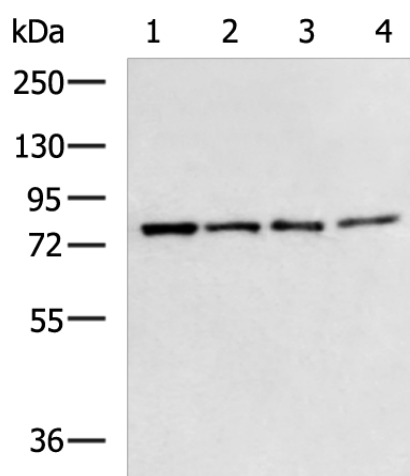
C3orf13; IL-1RAcP; IL1R3

**Protein Families:**

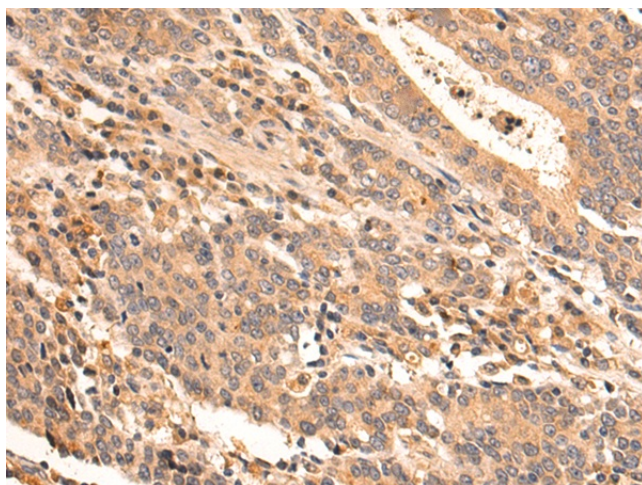
Druggable Genome, Secreted Protein, Transmembrane

**Protein Pathways:**

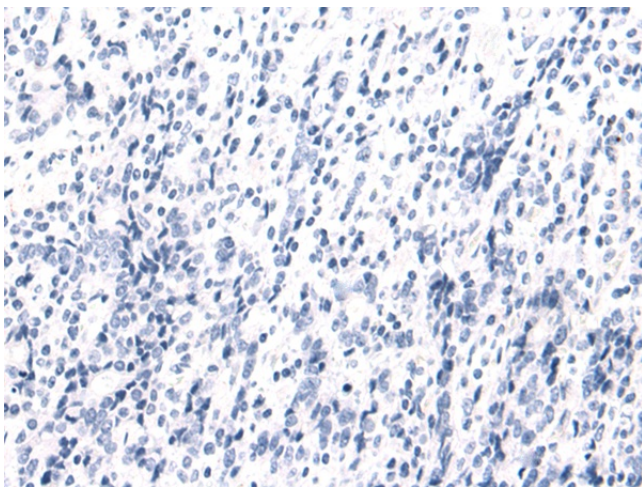
Apoptosis, Cytokine-cytokine receptor interaction

**Product images:**


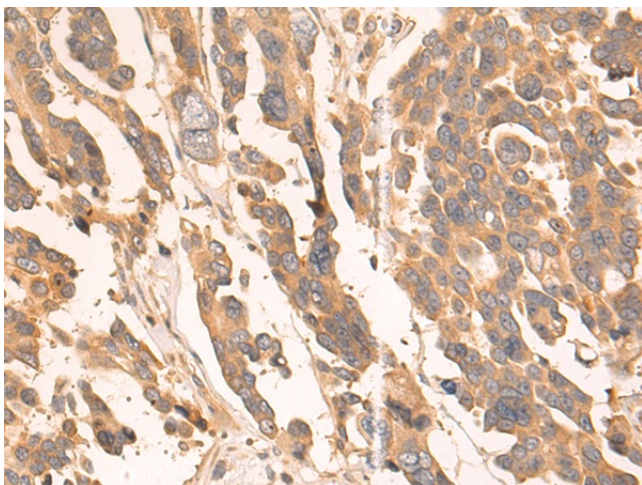
Gel: 8%SDS-PAGE  
 Lysate: 40 µg  
 Lane 1-4: Hela cell  
 Mouse heart tissue  
 Human cerebella tissue  
 Human cerebrum tissue lysates  
 Primary antibody: TA324046 (IL1RAP Antibody) at dilution 1/600  
 Secondary antibody: Goat anti rabbit IgG at 1/5000 dilution  
 Exposure time: 30 seconds



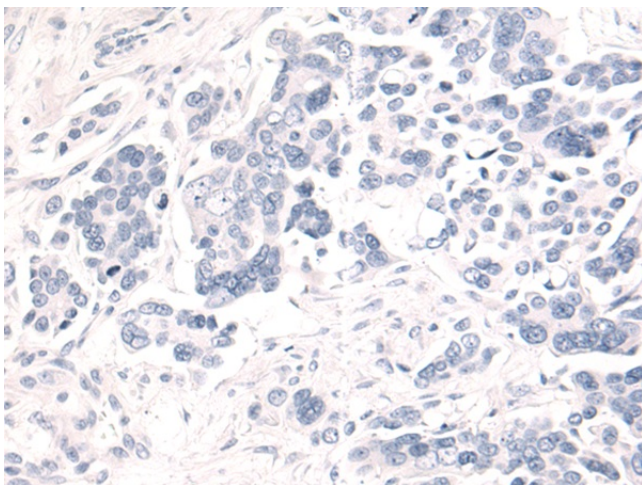
Immunohistochemistry of paraffin-embedded Human gastric cancer tissue using TA324046 (IL1RAP Antibody) at dilution 1/40 (Original magnification: ×200)



Immunohistochemistry of paraffin-embedded Human gastric cancer tissue using TA324046 (IL1RAP Antibody) at dilution 1/40, treated with fusion protein. (Original magnification:  $\times 200$ )



Immunohistochemistry of paraffin-embedded Human colorectal cancer tissue using TA324046 (IL1RAP Antibody) at dilution 1/40 (Original magnification:  $\times 200$ )



Immunohistochemistry of paraffin-embedded Human colorectal cancer tissue using TA324046 (IL1RAP Antibody) at dilution 1/40, treated with fusion protein. (Original magnification:  $\times 200$ )