

Product datasheet for **TA324044**

CARD8 Rabbit Polyclonal Antibody

Product data:

Product Type:	Primary Antibodies
Applications:	WB
Recommended Dilution:	WB: 1:500-2000
Reactivity:	Human
Host:	Rabbit
Isotype:	IgG
Clonality:	Polyclonal
Immunogen:	Fusion protein corresponding to N terminal 200 amino acids of human Caspase recruitment domain-containing protein 8
Formulation:	PBS pH7.3, 0.05% NaN ₃ , 50% glycerol
Concentration:	lot specific
Purification:	Antigen affinity purification
Conjugation:	Unconjugated
Storage:	Store at -20°C as received.
Stability:	Stable for 12 months from date of receipt.
Predicted Protein Size:	49 kDa
Gene Name:	caspase recruitment domain family member 8
Database Link:	NP_001171829 Entrez Gene 22900 Human Q9Y2G2



[View online »](#)

Background:

The protein encoded by this gene belongs to the caspase recruitment domain (CARD)-containing family of proteins, which are involved in pathways leading to activation of caspases or nuclear factor kappa-B (NFkB). This protein may be a component of the inflammasome, a protein complex that plays a role in the activation of proinflammatory caspases. It is thought that this protein acts as an adaptor molecule that negatively regulates NFkB activation, CASP1-dependent IL1B secretion, and apoptosis. Polymorphisms in this gene may be associated with a susceptibility to rheumatoid arthritis. Alternatively spliced transcript variants have been described for this gene, but their biological validity has not been determined.

Synonyms:

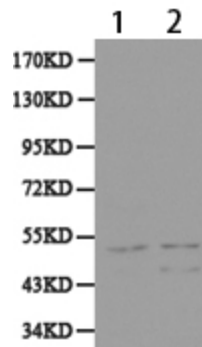
CARDINAL; DACAR; DAKAR; NDPP; NDPP1; TUCAN

Protein Families:

Druggable Genome

Protein Pathways:

NOD-like receptor signaling pathway

Product images:

Predicted band size: 49 kDa. Positive control: K562 and HeLa cell lysate. Recommended dilution: 1/500-2000. (Gel: 10%SDS-PAGE Lane 1.K562 cell lysate Lane 2.HeLa cell lysate Lysates: 30 ug per lane Primary antibody: 1/500 dilution Secondary antibody: Goat anti Rabbit IgG - H&L (HRP) at 1/10000 dilution Exposure time: 1 minute)