

Product datasheet for **TA324043S**

VANGL1 Rabbit Polyclonal Antibody

Product data:

| | |
|-------------------------|---|
| Product Type: | Primary Antibodies |
| Applications: | IHC, WB |
| Recommended Dilution: | WB: 200-1000 WB positive control: Human lymphoma and testis tissue IHC: 25-100 Positive control: Human lung cancer Predicted cell location: Cytoplasm |
| Reactivity: | Human, Mouse |
| Host: | Rabbit |
| Isotype: | IgG |
| Clonality: | Polyclonal |
| Immunogen: | Fusion protein corresponding to a region derived from 248-524 amino acids of human VANGL planar cell polarity protein 1 |
| Formulation: | PBS pH7.3, 0.05% NaN ₃ , 50% glycerol |
| Purification: | Antigen affinity purification |
| Conjugation: | Unconjugated |
| Storage: | Store at -20°C as received. |
| Stability: | Stable for 12 months from date of receipt. |
| Predicted Protein Size: | 60 kDa |
| Gene Name: | VANGL planar cell polarity protein 1 |
| Database Link: | NP_001165882 Entrez Gene 229658 Mouse Entrez Gene 81839 Human Q8TAA9 |



[View online »](#)

Background:

This gene encodes a member of the tetraspanin family. The encoded protein may be involved in mediating intestinal trefoil factor induced wound healing in the intestinal mucosa. Mutations in this gene are associated with neural tube defects. Alternate splicing results in multiple transcript variants. Interacts through its C-terminal region with the N-terminal half of DVL1, DVL2 and DVL3. The PDZ domain of DVL1, DVL2 and DVL3 is required for the interaction.

Synonyms:

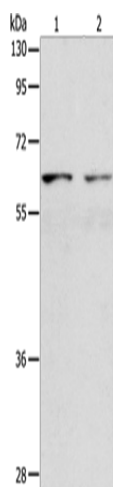
KITENIN; LPP2; STB2; STBM2

Protein Families:

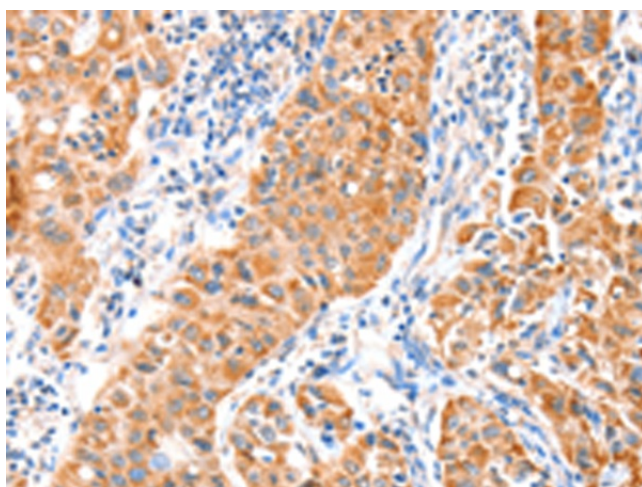
Transmembrane

Protein Pathways:

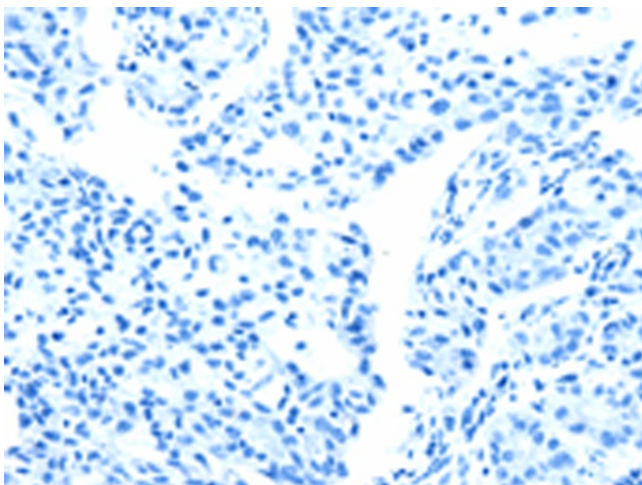
Wnt signaling pathway

Product images:


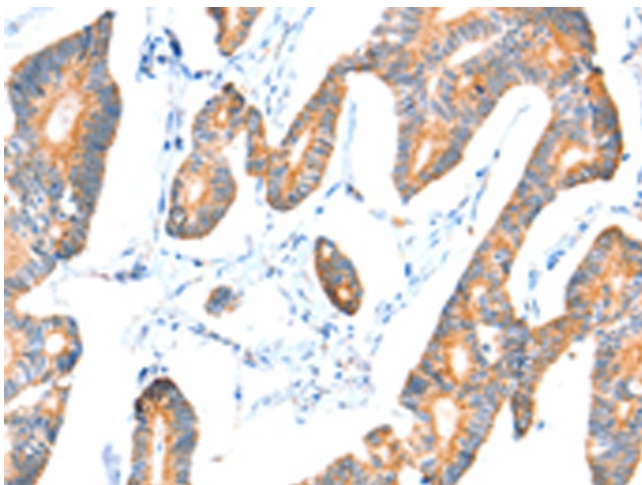
Gel: 8%SDS-PAGE
 Lysate: 40 µg
 Lane 1-2: Human lymphoma tissue
 Human testis tissue
 Primary antibody: [TA324043] (VANGL1 Antibody)
 at dilution 1/250
 Secondary antibody: Goat anti rabbit IgG at
 1/8000 dilution
 Exposure time: 20 seconds



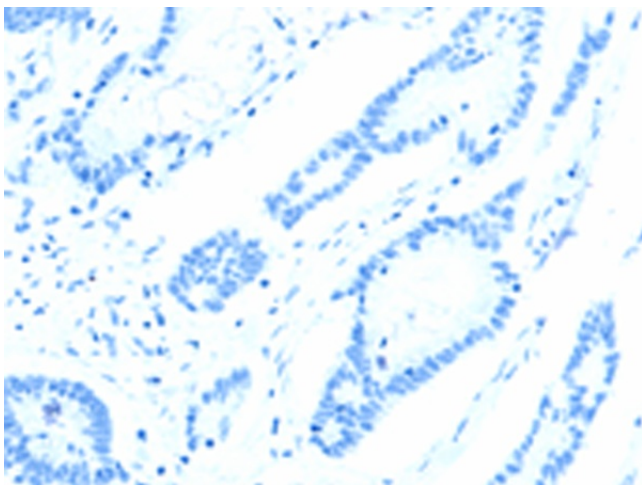
Immunohistochemistry of paraffin-embedded
 Human lung cancer tissue using [TA324043]
 (VANGL1 Antibody) at dilution 1/20 (Original
 magnification: ×200)



Immunohistochemistry of paraffin-embedded Human lung cancer tissue using [TA324043] (VANGL1 Antibody) at dilution 1/20, treated with fusion protein. (Original magnification: $\times 200$)



Immunohistochemistry of paraffin-embedded Human colon cancer tissue using [TA324043] (VANGL1 Antibody) at dilution 1/20 (Original magnification: $\times 200$)



Immunohistochemistry of paraffin-embedded Human colon cancer tissue using [TA324043] (VANGL1 Antibody) at dilution 1/20, treated with fusion protein. (Original magnification: $\times 200$)