

Product datasheet for **TA324042S**

VANGL1 Rabbit Polyclonal Antibody

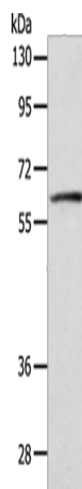
Product data:

Product Type:	Primary Antibodies
Applications:	IHC, WB
Recommended Dilution:	WB: 200-1000 WB positive control: Hela cells IHC: 25-100 Positive control: Human cervical cancer Predicted cell location: Cytoplasm
Reactivity:	Human, Mouse
Host:	Rabbit
Isotype:	IgG
Clonality:	Polyclonal
Immunogen:	Fusion protein corresponding to a region derived from 248-524 amino acids of human VANGL planar cell polarity protein 1
Formulation:	PBS pH7.3, 0.05% NaN ₃ , 50% glycerol
Purification:	Antigen affinity purification
Conjugation:	Unconjugated
Storage:	Store at -20°C as received.
Stability:	Stable for 12 months from date of receipt.
Predicted Protein Size:	60 kDa
Gene Name:	VANGL planar cell polarity protein 1
Database Link:	NP_001165882 Entrez Gene 229658 Mouse Entrez Gene 81839 Human Q8TAA9

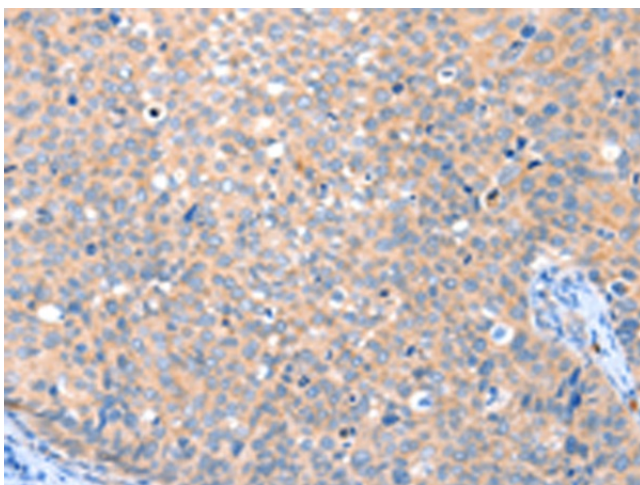


[View online »](#)

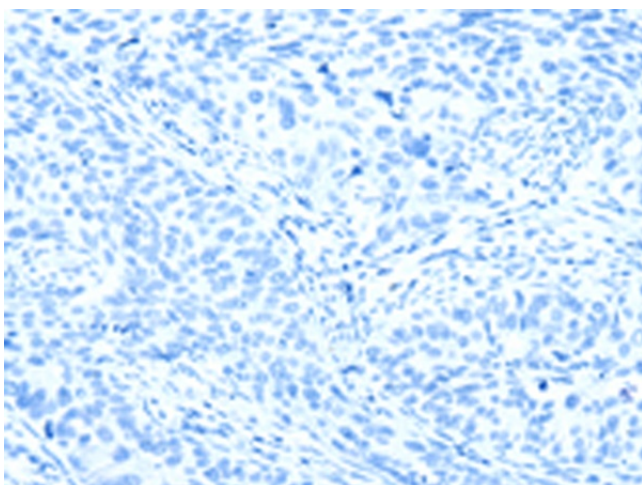
Background:	This gene encodes a member of the tetraspanin family. The encoded protein may be involved in mediating intestinal trefoil factor induced wound healing in the intestinal mucosa. Mutations in this gene are associated with neural tube defects. Alternate splicing results in multiple transcript variants. Interacts through its C-terminal region with the N-terminal half of DVL1, DVL2 and DVL3. The PDZ domain of DVL1, DVL2 and DVL3 is required for the interaction.
Synonyms:	KITENIN; LPP2; STB2; STBM2
Protein Families:	Transmembrane
Protein Pathways:	Wnt signaling pathway

Product images:

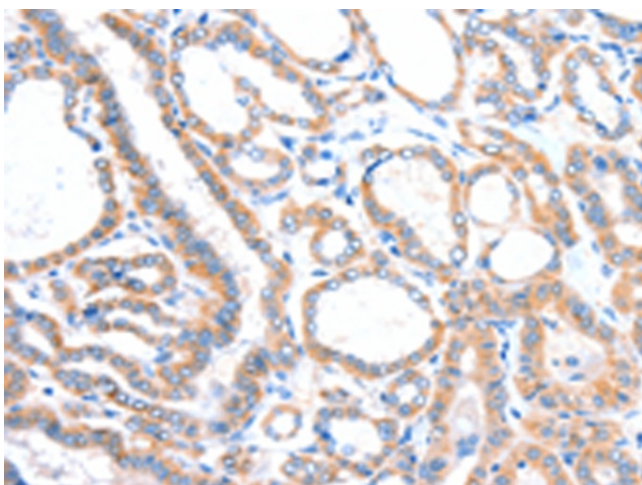
Gel: 8%SDS-PAGE
Lysate: 40 µg
Lane: HeLa cells
Primary antibody: [TA324042] (VANGL1 Antibody)
at dilution 1/250
Secondary antibody: Goat anti rabbit IgG at
1/8000 dilution
Exposure time: 5 seconds



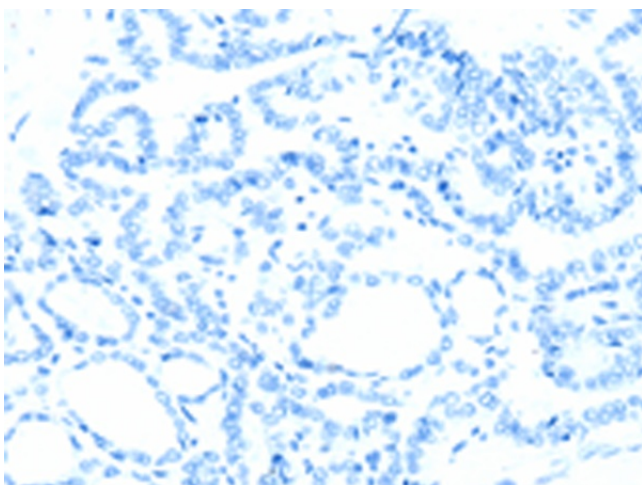
Immunohistochemistry of paraffin-embedded
Human cervical cancer tissue using [TA324042]
(VANGL1 Antibody) at dilution 1/20 (Original
magnification: ×200)



Immunohistochemistry of paraffin-embedded Human cervical cancer tissue using [TA324042] (VANG1 Antibody) at dilution 1/20, treated with fusion protein. (Original magnification: $\times 200$)



Immunohistochemistry of paraffin-embedded Human thyroid cancer tissue using [TA324042] (VANG1 Antibody) at dilution 1/20 (Original magnification: $\times 200$)



Immunohistochemistry of paraffin-embedded Human thyroid cancer tissue using [TA324042] (VANG1 Antibody) at dilution 1/20, treated with fusion protein. (Original magnification: $\times 200$)