

Product datasheet for **TA324040**

PPP2R2A Rabbit Polyclonal Antibody

Product data:

Product Type:	Primary Antibodies
Applications:	WB
Recommended Dilution:	WB: 1:500-2000
Reactivity:	Human, Mouse, Rat
Host:	Rabbit
Isotype:	IgG
Clonality:	Polyclonal
Immunogen:	Fusion protein corresponding to a region derived from 50-280 amino acids of human protein phosphatase 2, regulatory subunit B, alpha
Formulation:	PBS pH7.3, 0.05% NaN ₃ , 50% glycerol
Concentration:	lot specific
Purification:	Antigen affinity purification
Conjugation:	Unconjugated
Storage:	Store at -20°C as received.
Stability:	Stable for 12 months from date of receipt.
Predicted Protein Size:	52 kDa
Gene Name:	protein phosphatase 2 regulatory subunit Balpha
Database Link:	NP_001171062 Entrez Gene 71978 MouseEntrez Gene 117104 RatEntrez Gene 5520 Human P63151
Background:	Protein phosphatase 2A subunit B isoform R2-a (PPP2R2A) is the component of regulatory subunit B of serine/threonine protein phosphatase 2A (PP2A). PPP2R2A belongs to the R2/B55/PR55 family of regulatory subunit B. Evidence suggests that subunit PPP2R2A enhances TGF- β , Activin, and Nodal signaling pathways and may play an important role in cell cycle regulation. PPP2R2A/PP2A, B55-a/PR55-a isoform interacts with the type I TGF- β receptors via unique WD-40 repeats that contribute to the anti-proliferative function of TGF- β receptors.
Synonyms:	B55A; B55ALPHA; PR52A; PR55A

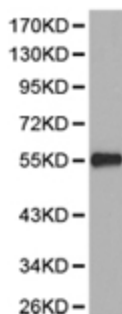


[View online »](#)

Protein Families: Druggable Genome, Phosphatase

Protein Pathways: Tight junction

Product images:



Predicted band size: 52 kDa. Positive control: Rat brain tissue lysate. Recommended dilution: 1/500-2000. (Gel: 10%SDS-PAGE Lysate: 40 ug Primary antibody: 1/500 dilution Secondary antibody: Goat anti Rabbit IgG - H&L (HRP) at 1/10000 dilution Exposure time: 1 minute)