

## Product datasheet for **TA324039**

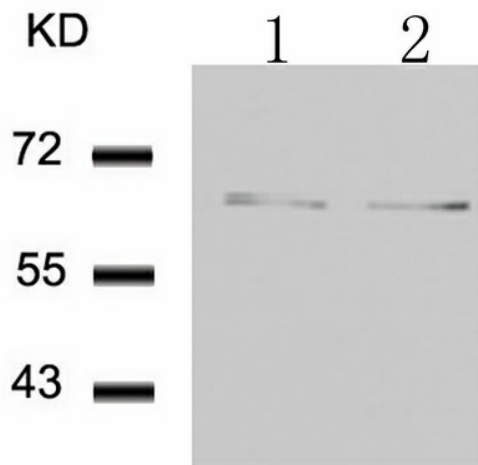
### FOXO4 Rabbit Polyclonal Antibody

#### Product data:

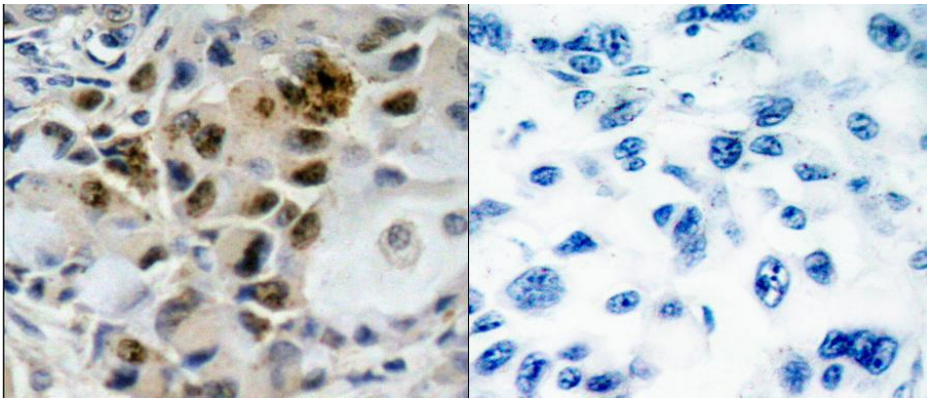
Product Type:	Primary Antibodies
Applications:	IHC, WB
Recommended Dilution:	WB: 1:500-1000, IHC: 1:50-100
Reactivity:	Human, Mouse, Rat
Host:	Rabbit
Isotype:	IgG
Clonality:	Polyclonal
Immunogen:	Peptide sequence around aa. 195~199 (A-A-S-M-D) derived from Human FOXO4.
Formulation:	PBS pH7.3, 0.05% NaN <sub>3</sub> , 50% glycerol
Concentration:	lot specific
Purification:	Antigen affinity purification
Conjugation:	Unconjugated
Storage:	Store at -20°C as received.
Stability:	Stable for 12 months from date of receipt.
Predicted Protein Size:	54 kDa
Gene Name:	forkhead box O4
Database Link:	<a href="#">NP_001164402</a> <a href="#">Entrez Gene 54601 MouseEntrez Gene 302415 RatEntrez Gene 4303 Human P98177</a>
Background:	Transcription factor involved in the regulation of the insulin signaling pathway. Binds to insulin-response elements (IREs) and can activate transcription of IGF1. Down-regulates expression of HIF1A and suppresses hypoxia-induced transcriptional activation of HIF1A-modulated genes. Also involved in negative regulation of the cell cycle.
Synonyms:	AFX; AFX1; MLLT7
Protein Families:	Transcription Factors



[View online »](#)

**Product images:**


Predicted band size: 54 kDa. Positive control: 293 and THP1 cells lysate. Recommended dilution: 1/500-1000. (Gel: 10%SDS-PAGE Lane 1, 2: 293 and THP1 cells Lysates: 30 ug per lane Primary antibody: 1/500 dilution Secondary antibody: Goat anti Rabbit IgG - H&L (HRP) at 1/10000 dilution Exposure time: 1 minute)



Predicted cell location: Cytoplasm; Nucleus. Positive control: Human lung carcinoma tissue. Recommended dilution: 1/50-100 The image on the left is immunohistochemistry of paraffin-embedded human lung carcinoma tissue using FOXO4 (Ab-197) antibody at dilution 1/50, on the right is treated with the synthetic peptide. (Original magnification:x200)