

Product datasheet for **TA324038**

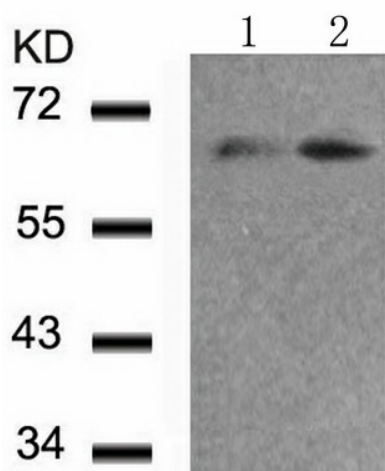
FOXO4 Rabbit Polyclonal Antibody

Product data:

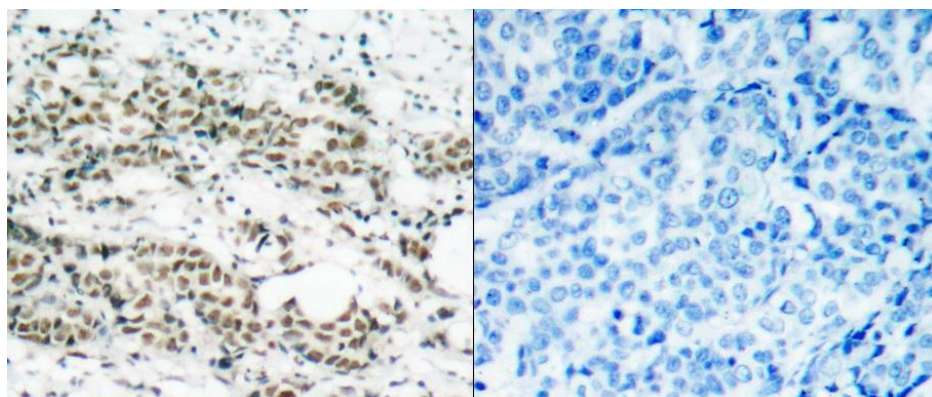
Product Type:	Primary Antibodies
Applications:	IF, IHC, WB
Recommended Dilution:	WB: 1:500-1000, IHC: 1:50-100, IF: 1:100-200
Reactivity:	Human, Mouse, Rat
Modifications:	Phospho-specific
Host:	Rabbit
Isotype:	IgG
Clonality:	Polyclonal
Immunogen:	Peptide sequence around phosphorylation site of serine 197 (A-A-S(p)-M-D) derived from Human FOXO4.
Formulation:	PBS pH7.3, 0.05% NaN ₃ , 50% glycerol
Concentration:	lot specific
Purification:	Antigen affinity purification
Conjugation:	Unconjugated
Storage:	Store at -20°C as received.
Stability:	Stable for 12 months from date of receipt.
Predicted Protein Size:	54 kDa
Gene Name:	forkhead box O4
Database Link:	NP_005929 Entrez Gene 54601 Mouse Entrez Gene 302415 Rat Entrez Gene 4303 Human P98177
Background:	Transcription factor involved in the regulation of the insulin signaling pathway. Binds to insulin-response elements (IREs) and can activate transcription of IGF1. Down-regulates expression of HIF1A and suppresses hypoxia-induced transcriptional activation of HIF1A-modulated genes. Also involved in negative regulation of the cell cycle.
Synonyms:	AFX; AFX1; MLLT7
Protein Families:	Transcription Factors



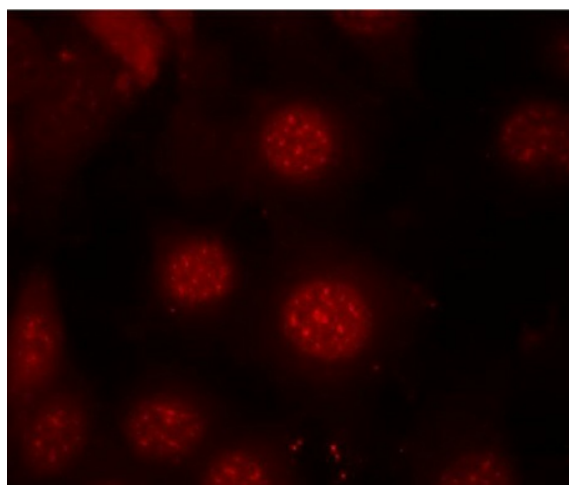
[View online »](#)

Product images:


Predicted band size: 54 kDa. Positive control: 293 cells untreated or treated with serum lysate. Recommended dilution: 1/ 500-1000. (Gel: 10%SDS-PAGE Lane 1: 293 cells untreated with serum lysate Lane 2: 293 cells treated with serum lysate Lysates: 30 ug per lane Primary antibody: 1/500 dilution Secondary antibody: Goat anti Rabbit IgG - H&L (HRP) at 1/10000 dilution Exposure time: 1 minute)



Predicted cell location: Cytoplasm; Nucleus. Positive control: Human breast carcinoma tissue. Recommended dilution: 1/ 50-100 The image on the left is immunohistochemistry of paraffin-embedded human breast carcinoma tissue using FOXO4 (Phospho-Ser197) antibody at dilution 1/50, on the right is treated with the synthetic peptide. (Original magnification:x200)



Predicted cell location: Cytoplasm; Nucleus. Positive control: MCF7 cells. Recommended dilution: 1/ 100-200. The image is immunofluorescence of methanol-fixed MCF7 cells using FOXO4 (Phospho-Ser197) antibody at dilution 1/100. (Original magnification:x200)