

Product datasheet for **TA324037**

Suppressor of Fused (SUFU) Rabbit Polyclonal Antibody

Product data:

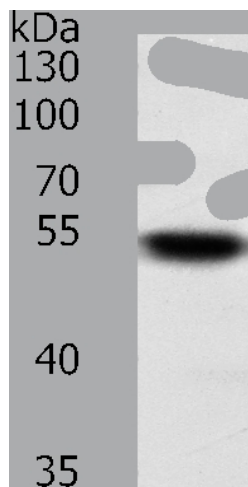
Product Type:	Primary Antibodies
Applications:	IHC, WB
Recommended Dilution:	ELISA: 1:1000-2000, WB: 1:200-1000, IHC: 1:15-50
Reactivity:	Human, Mouse, Rat
Host:	Rabbit
Isotype:	IgG
Clonality:	Polyclonal
Immunogen:	Fusion protein corresponding to C terminal 250 amino acids of human suppressor of fused homolog (Drosophila)
Formulation:	PBS pH7.3, 0.05% NaN ₃ , 50% glycerol
Concentration:	lot specific
Purification:	Antigen affinity purification
Conjugation:	Unconjugated
Storage:	Store at -20°C as received.
Stability:	Stable for 12 months from date of receipt.
Predicted Protein Size:	54 kDa
Gene Name:	SUFU negative regulator of hedgehog signaling
Database Link:	NP_001171604 Entrez Gene 24069 Mouse Entrez Gene 361769 Rat Entrez Gene 51684 Human Q9UMX1
Background:	The Hedgehog signaling pathway plays an important role in early human development. The pathway is a signaling cascade that plays a role in pattern formation and cellular proliferation during development. This gene encodes a negative regulator of the hedgehog signaling pathway. Defects in this gene are a cause of medulloblastoma. Alternative splicing results in multiple transcript variants.
Synonyms:	PRO1280; SUFUH; SUFUXL
Protein Families:	Druggable Genome, Transcription Factors



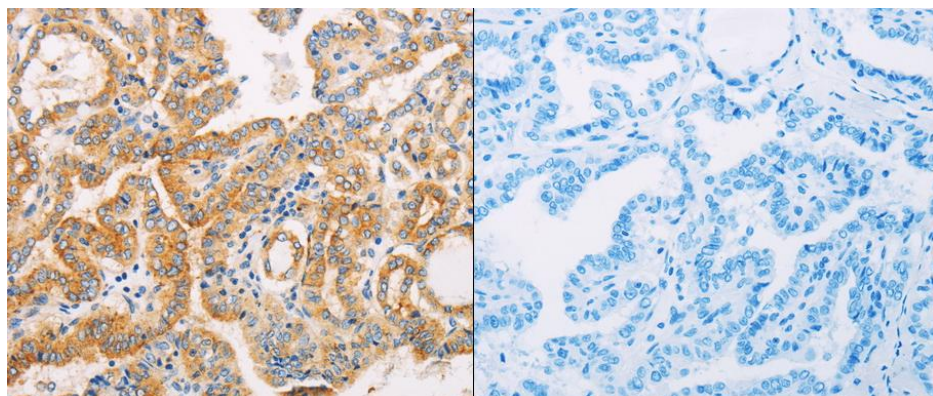
[View online »](#)

Protein Pathways: Basal cell carcinoma, Hedgehog signaling pathway, Pathways in cancer

Product images:



Predicted band size: 54 kDa. Positive control: Jurkat cell lysate. Recommended dilution: 1/200-1000. (Gel: 10%SDS-PAGE Lysate: 50 ug per lane Primary antibody: 1/100 dilution Secondary antibody: Goat anti Rabbit IgG - H&L (HRP) at 1/10000 dilution Exposure time: 10 seconds)



Predicted cell location: Cytoplasm. Positive control: Human thyroid cancer tissue. Recommended dilution: 1/15-50 The image on the left is immunohistochemistry of paraffin-embedded human thyroid cancer tissue using SUFU antibody at dilution 1/10, on the right is treated with the fusion protein. (Original magnification:x200)