

Product datasheet for **TA324033**

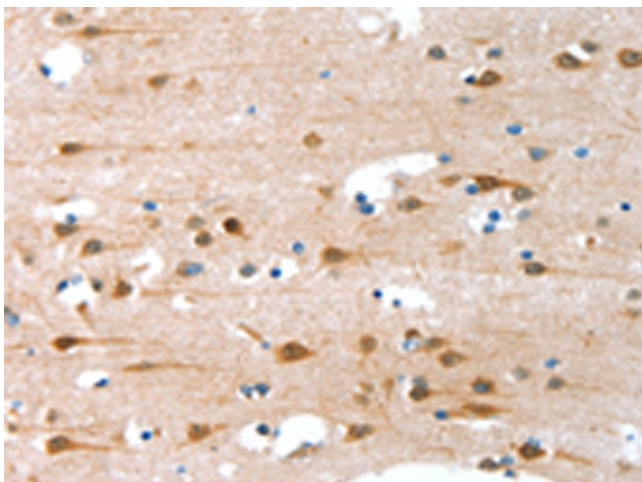
C2CD6 Rabbit Polyclonal Antibody

Product data:

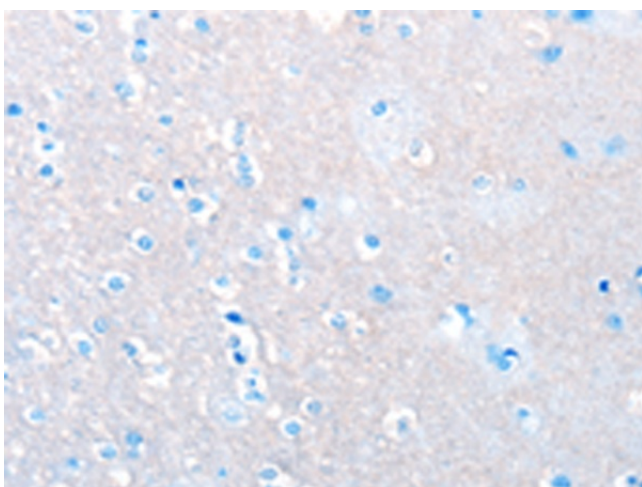
Product Type:	Primary Antibodies
Applications:	IHC
Recommended Dilution:	IHC: 25-100 Positive control: Human brain Predicted cell location: Nucleus and Cytoplasm
Reactivity:	Human
Host:	Rabbit
Isotype:	IgG
Clonality:	Polyclonal
Immunogen:	Fusion protein corresponding to C terminal 103 amino acids of human amyotrophic lateral sclerosis 2 (juvenile) chromosome region, candidate 11
Formulation:	PBS pH7.3, 0.05% NaN ₃ , 50% glycerol
Concentration:	lot specific
Purification:	Antigen affinity purification
Conjugation:	Unconjugated
Storage:	Store at -20°C as received.
Stability:	Stable for 12 months from date of receipt.
Gene Name:	amyotrophic lateral sclerosis 2 chromosome region candidate 11
Database Link:	NP_689738 Entrez Gene 151254 Human Q53TS8
Background:	This gene has highly expression in digestive system component and liver, biliary system. It may have four isoforms that produced by alternative splicing. Transcription profiling of human mesenchymal stem cells transformed with lentiviral vectors of TERT, E6, SV40 and RAS.
Synonyms:	DKFZp686H0636; FLJ25351; FLJ40332



[View online »](#)

Product images:

Immunohistochemistry of paraffin-embedded Human brain tissue using TA324033 (C2CD6 Antibody) at dilution 1/30 (Original magnification: ×200)



Immunohistochemistry of paraffin-embedded Human brain tissue using TA324033 (C2CD6 Antibody) at dilution 1/30, treated with fusion protein. (Original magnification: ×200)