

Product datasheet for **TA324032**

Lactate Dehydrogenase B (LDHB) Rabbit Polyclonal Antibody

Product data:

Product Type:	Primary Antibodies
Applications:	WB
Recommended Dilution:	ELISA: 1:2000-10000, WB: 1:1000-5000
Reactivity:	Human, Mouse, Rat
Host:	Rabbit
Isotype:	IgG
Clonality:	Polyclonal
Immunogen:	Synthetic peptide (KLH-coupled) derived from human LDHB
Formulation:	PBS pH7.3, 0.05% NaN ₃ , 50% glycerol
Concentration:	lot specific
Purification:	Antigen affinity purification
Conjugation:	Unconjugated
Storage:	Store at -20°C as received.
Stability:	Stable for 12 months from date of receipt.
Predicted Protein Size:	37 kDa
Gene Name:	lactate dehydrogenase B
Database Link:	NP_001167568 Entrez Gene 16832 MouseEntrez Gene 24534 RatEntrez Gene 3945 Human P07195

Background: This gene encodes an enzyme which catalyzes the reversible conversion of lactate and pyruvate, and NAD and NADH, in the glycolytic pathway. Mutations in this gene are associated with lactate dehydrogenase B deficiency. Pseudogenes have been identified on the X chromosome and on chromosome. Multiple alternatively spliced variants, encoding the same protein, have been identified. Rare LDHB variants result in deficiency of lactate dehydrogenase, a condition with no deleterious effects on health. LDHB deficiency is of interest to laboratory medicine mainly because it can cause misdiagnosis in those disorders in which elevation of serum LDH is expected. Lactate dehydrogenase deficiency can probably be considered a non-disease.



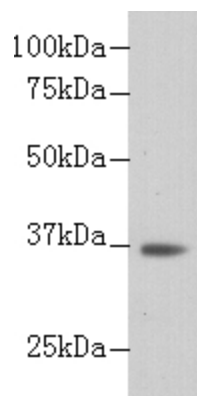
[View online »](#)

Synonyms: HEL-S-281; LDH-B; LDH-H; LDHBD; TRG-5

Protein Families: Druggable Genome

Protein Pathways: Cysteine and methionine metabolism, Glycolysis / Gluconeogenesis, Metabolic pathways, Propanoate metabolism, Pyruvate metabolism

Product images:



Predicted band size: 37 kDa. Positive control: HeLa cell lysate. Recommended dilution: 1/ 1000-5000. (Gel: 10%SDS-PAGE Lysate: 30 ug Primary antibody: 1/1000 dilution Secondary antibody: Goat anti Rabbit IgG - H&L (HRP) at 1/10000 dilution Exposure time: 1 minute)