

## Product datasheet for **TA324028S**

### VDAC2 Rabbit Polyclonal Antibody

#### Product data:

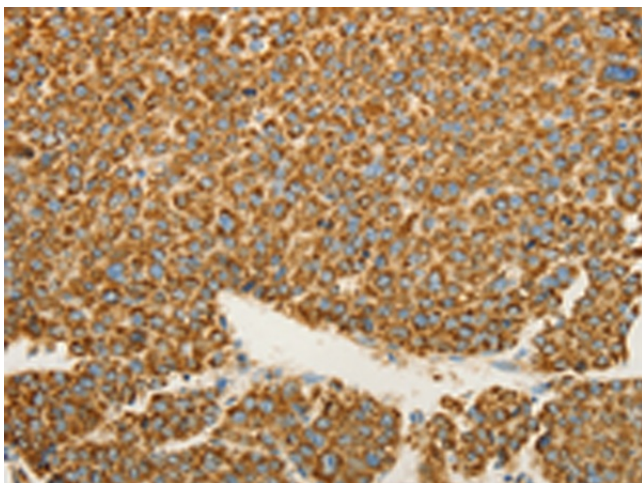
Product Type:	Primary Antibodies
Applications:	IHC
Recommended Dilution:	IHC: 50-200 Positive control: Human liver cancer Predicted cell location: Cytoplasm
Reactivity:	Human, Mouse, Rat
Host:	Rabbit
Isotype:	IgG
Clonality:	Polyclonal
Immunogen:	Synthetic peptide corresponding to a region derived from 283-294 amino acids of human voltage-dependent anion channel 2
Formulation:	PBS pH7.3, 0.05% NaN <sub>3</sub> , 50% glycerol
Purification:	Antigen affinity purification
Conjugation:	Unconjugated
Storage:	Store at -20°C as received.
Stability:	Stable for 12 months from date of receipt.
Gene Name:	voltage dependent anion channel 2
Database Link:	<a href="#">NP_003366</a> <a href="#">Entrez Gene 22334 Mouse</a> <a href="#">Entrez Gene 83531 Rat</a> <a href="#">Entrez Gene 7417 Human</a> <a href="#">P45880</a>
Background:	This gene encodes a member of the voltage-dependent anion channel pore-forming family of proteins that are considered the main pathway for metabolite diffusion across the mitochondrial outer membrane. The encoded protein is also thought to be involved in the mitochondrial apoptotic pathway via regulation of BCL2-antagonist/killer 1 protein activity. Pseudogenes have been identified on chromosomes 1; 2; 12 and 21; and alternative splicing results in multiple transcript variants.?
Synonyms:	POR
Protein Families:	Druggable Genome, Ion Channels: Other



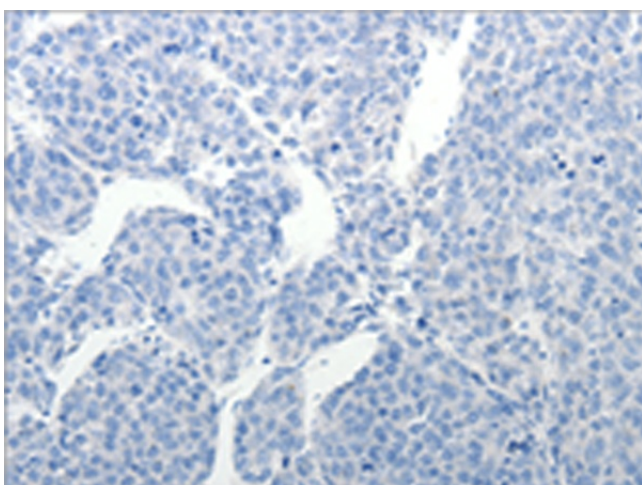
[View online »](#)

Protein Pathways: Calcium signaling pathway, Huntington's disease, Parkinson's disease

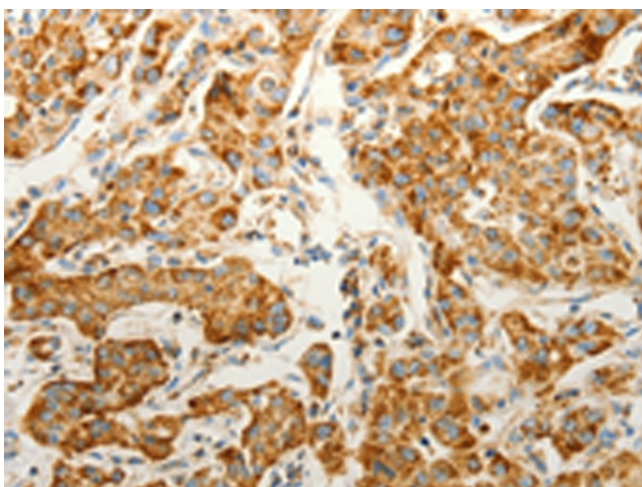
**Product images:**



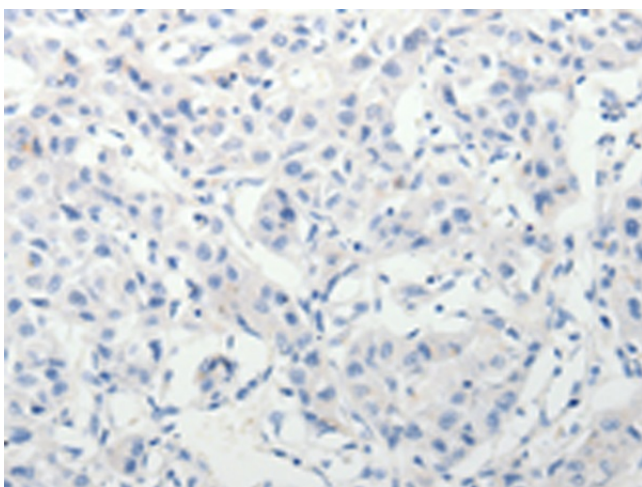
Immunohistochemistry of paraffin-embedded Human liver cancer tissue using [TA324028] (VDAC2 Antibody) at dilution 1/25 (Original magnification:  $\times 200$ )



Immunohistochemistry of paraffin-embedded Human liver cancer tissue using [TA324028] (VDAC2 Antibody) at dilution 1/25, treated with synthetic peptide. (Original magnification:  $\times 200$ )



Immunohistochemistry of paraffin-embedded Human lung cancer tissue using [TA324028] (VDAC2 Antibody) at dilution 1/25 (Original magnification:  $\times 200$ )



Immunohistochemistry of paraffin-embedded Human lung cancer tissue using [TA324028] (VDAC2 Antibody) at dilution 1/25, treated with synthetic peptide. (Original magnification:  $\times 200$ )