

Product datasheet for **TA324027**

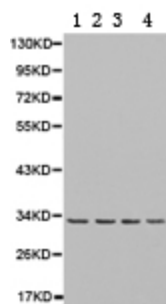
DCI (ECI1) Rabbit Polyclonal Antibody

Product data:

Product Type:	Primary Antibodies
Applications:	WB
Recommended Dilution:	WB: 1:500-2000
Reactivity:	Human, Mouse, Rat
Host:	Rabbit
Isotype:	IgG
Clonality:	Polyclonal
Immunogen:	Fusion protein corresponding to C terminal 240 amino acids of human enoyl-CoA delta isomerase 1
Formulation:	PBS pH7.3, 0.05% NaN ₃ , 50% glycerol
Concentration:	lot specific
Purification:	Antigen affinity purification
Conjugation:	Unconjugated
Storage:	Store at -20°C as received.
Stability:	Stable for 12 months from date of receipt.
Predicted Protein Size:	33 kDa
Gene Name:	enoyl-CoA delta isomerase 1
Database Link:	NP_001171500 Entrez Gene 13177 Mouse Entrez Gene 29740 Rat Entrez Gene 1632 Human P42126
Background:	This gene encodes a member of the hydratase/isomerase superfamily. The protein encoded is a key mitochondrial enzyme involved in beta-oxidation of unsaturated fatty acids. It catalyzes the transformation of 3-cis and 3-trans-enoyl-CoA esters arising during the stepwise degradation of cis-, mono-, and polyunsaturated fatty acids to the 2-trans-enoyl-CoA intermediates. Alternatively spliced transcript variants have been described.
Synonyms:	DCI
Protein Pathways:	Fatty acid metabolism



[View online »](#)

Product images:

Predicted band size: 33 kDa. Positive control: RT-4 and U-251MG cell, liver and tonail tissue lysate. Recommended dilution: 1/500-2000. (Gel: 10%SDS-PAGE Lane 1: RT-4 cell lysate Lane 2: U-251MG cell lysate Lane 3: Liver tissue lysate Lane 4: Tonail tissue lysate Lysates: 40 ug per lane Primary antibody: 1/500 dilution Secondary antibody: Goat anti Rabbit IgG - H&L (HRP) at 1/10000 dilution Exposure time: 1 minute)