

## Product datasheet for **TA324022**

### Tissue Factor (F3) Rabbit Polyclonal Antibody

#### Product data:

Product Type:	Primary Antibodies
Applications:	IHC, WB
Recommended Dilution:	WB: 200-1000 WB positive control: Human fetal lung tissue IHC: 25-100 Positive control: Human gastric cancer Predicted cell location: Membrane
Reactivity:	Human
Host:	Rabbit
Isotype:	IgG
Clonality:	Polyclonal
Immunogen:	Fusion protein corresponding to a region derived from 33-251 amino acids of human coagulation factor III (thromboplastin, tissue factor)
Formulation:	PBS pH7.3, 0.05% NaN <sub>3</sub> , 50% glycerol
Concentration:	lot specific
Purification:	Antigen affinity purification
Conjugation:	Unconjugated
Storage:	Store at -20°C as received.
Stability:	Stable for 12 months from date of receipt.
Predicted Protein Size:	33 kDa
Gene Name:	coagulation factor III, tissue factor
Database Link:	<a href="#">NP_001171567</a> <a href="#">Entrez Gene 2152 Human P13726</a>



[View online »](#)

**Background:**

This gene encodes coagulation factor III which is a cell surface glycoprotein. This factor enables cells to initiate the blood coagulation cascades; and it functions as the high-affinity receptor for the coagulation factor VII. The resulting complex provides a catalytic event that is responsible for initiation of the coagulation protease cascades by specific limited proteolysis. Unlike the other cofactors of these protease cascades; which circulate as nonfunctional precursors; this factor is a potent initiator that is fully functional when expressed on cell surfaces. There are 3 distinct domains of this factor: extracellular; transmembrane; and cytoplasmic. This protein is the only one in the coagulation pathway for which a congenital deficiency has not been described. Alternate splicing results in multiple transcript variants.

**Synonyms:**

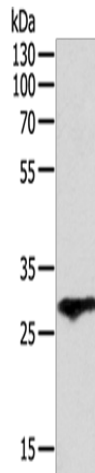
CD142; TF; TFA

**Protein Families:**

Druggable Genome, Transmembrane

**Protein Pathways:**

Complement and coagulation cascades

**Product images:**

Gel: 10%SDS-PAGE

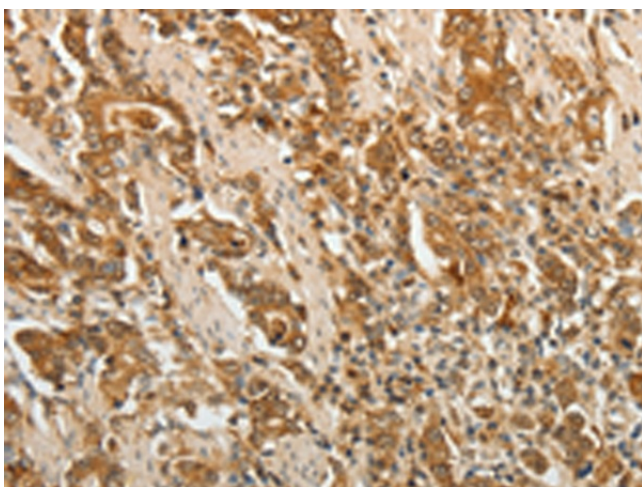
Lysate: 40 µg

Lane: Human fetal lung tissue

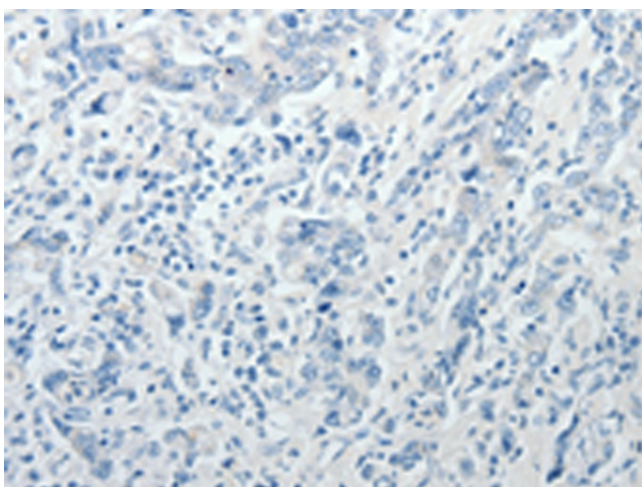
Primary antibody: TA324022 (F3 Antibody) at dilution 1/400

Secondary antibody: Goat anti rabbit IgG at 1/8000 dilution

Exposure time: 2 minutes



Immunohistochemistry of paraffin-embedded Human gastric cancer tissue using TA324022 (F3 Antibody) at dilution 1/25 (Original magnification:  $\times 200$ )



Immunohistochemistry of paraffin-embedded Human gastric cancer tissue using TA324022 (F3 Antibody) at dilution 1/25, treated with fusion protein. (Original magnification:  $\times 200$ )