

## Product datasheet for **TA324021S**

### VEGFA Rabbit Polyclonal Antibody

#### Product data:

Product Type:	Primary Antibodies
Applications:	IHC, WB
Recommended Dilution:	WB: 500-2000 WB positive control: Hela cell lysate IHC: 50-200 Positive control: Human liver cancer Predicted cell location: Cytoplasm
Reactivity:	Human
Host:	Rabbit
Isotype:	IgG
Clonality:	Polyclonal
Immunogen:	Synthetic peptide corresponding to a region derived from 130-143 amino acids of human vascular endothelial growth factor A
Formulation:	PBS pH7.3, 0.05% NaN <sub>3</sub> , 50% glycerol
Purification:	Antigen affinity purification
Conjugation:	Unconjugated
Storage:	Store at -20°C as received.
Stability:	Stable for 12 months from date of receipt.
Gene Name:	vascular endothelial growth factor A
Database Link:	<a href="#">NP_001165094</a> <a href="#">Entrez Gene 7422 Human</a> <a href="#">P15692</a>



[View online »](#)

**Background:**

This gene is a member of the PDGF/VEGF growth factor family and encodes a protein that is often found as a disulfide linked homodimer. This protein is a glycosylated mitogen that specifically acts on endothelial cells and has various effects; including mediating increased vascular permeability; inducing angiogenesis; vasculogenesis and endothelial cell growth; promoting cell migration; and inhibiting apoptosis. Elevated levels of this protein is linked to POEMS syndrome; also known as Crow-Fukase syndrome. Mutations in this gene have been associated with proliferative and nonproliferative diabetic retinopathy. Alternatively spliced transcript variants; encoding either freely secreted or cell-associated isoforms; have been characterized. There is also evidence for the use of non-AUG (CUG) translation initiation sites upstream of; and in-frame with the first AUG; leading to additional isoforms.

**Synonyms:**

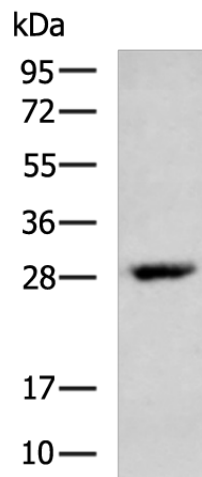
MGC70609; MVCD1; VEGF; VPF

**Protein Families:**

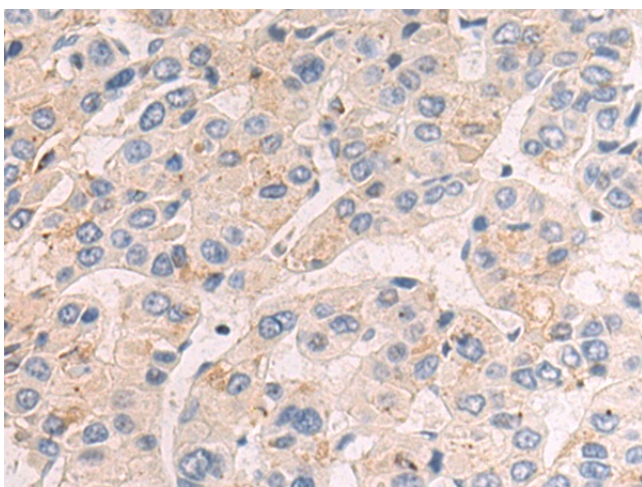
Druggable Genome, Secreted Protein

**Protein Pathways:**

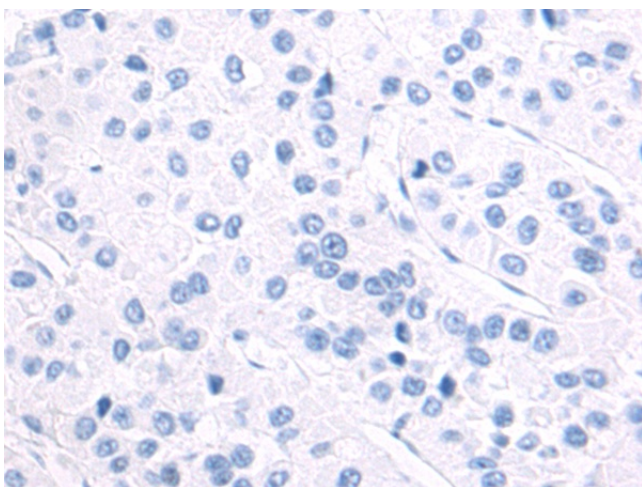
Bladder cancer, Cytokine-cytokine receptor interaction, Focal adhesion, mTOR signaling pathway, Pancreatic cancer, Pathways in cancer, Renal cell carcinoma, VEGF signaling pathway

**Product images:**

Gel: 8%SDS-PAGE  
Lysate: 40 µg  
Lane: HeLa cell lysate  
Primary antibody: [TA324021] (VEGFA Antibody) at dilution 1/600  
Secondary antibody: Goat anti rabbit IgG at 1/5000 dilution  
Exposure time: 2 minutes



Immunohistochemistry of paraffin-embedded Human liver cancer tissue using [TA324021] (VEGFA Antibody) at dilution 1/50 (Original magnification: ×200)



Immunohistochemistry of paraffin-embedded Human liver cancer tissue using [TA324021] (VEGFA Antibody) at dilution 1/50, treated with synthetic peptide. (Original magnification: ×200)