

## Product datasheet for **TA324019S**

### **BAG1 Rabbit Polyclonal Antibody**

#### **Product data:**

Product Type:	Primary Antibodies
Applications:	IHC, WB
Recommended Dilution:	WB: 500-2000 WB positive control: Hela, K562 and Raji cells IHC: 50-200 Positive control: Human thyroid cancer Predicted cell location: Nucleus
Reactivity:	Human
Host:	Rabbit
Isotype:	IgG
Clonality:	Polyclonal
Immunogen:	Fusion protein corresponding to a region derived from 116-345 amino acids of human BCL2-associated athanogene
Formulation:	PBS pH7.3, 0.05% NaN <sub>3</sub> , 50% glycerol
Purification:	Antigen affinity purification
Conjugation:	Unconjugated
Storage:	Store at -20°C as received.
Stability:	Stable for 12 months from date of receipt.
Predicted Protein Size:	39 kDa
Gene Name:	BCL2 associated athanogene 1
Database Link:	<a href="#">NP_001165886</a> <a href="#">Entrez Gene 573 Human</a> <a href="#">Q99933</a>



[View online »](#)

**Background:**

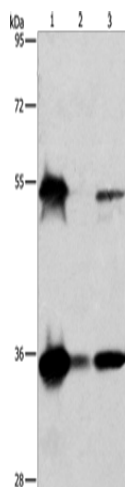
The oncogene BCL2 is a membrane protein that blocks a step in a pathway leading to apoptosis or programmed cell death. The protein encoded by this gene binds to BCL2 and is referred to as BCL2-associated athanogene. It enhances the anti-apoptotic effects of BCL2 and represents a link between growth factor receptors and anti-apoptotic mechanisms. Multiple protein isoforms are encoded by this mRNA through the use of a non-AUG (CUG) initiation codon, and three alternative downstream AUG initiation codons. A related pseudogene has been defined on chromosome X.

**Synonyms:**

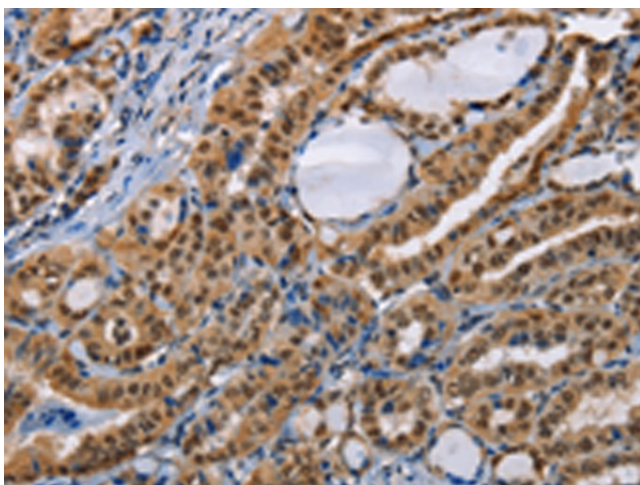
HAP; RAP46

**Protein Families:**

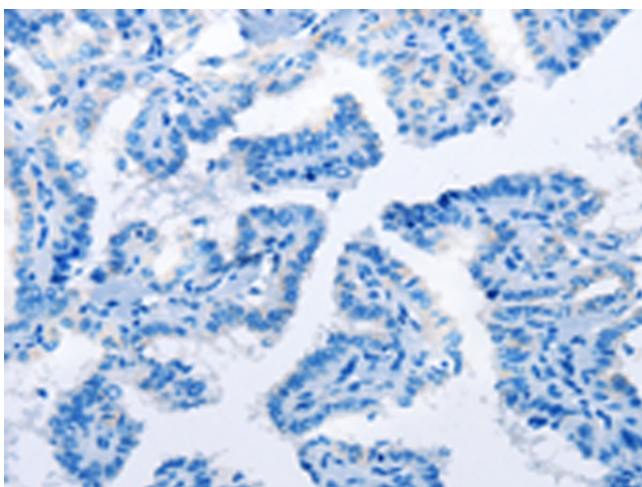
Druggable Genome

**Product images:**


Gel: 8%SDS-PAGE  
 Lysate: 50 µg  
 Lane 1-3: HeLa cells  
 K562 cells  
 Raji cells  
 Primary antibody: [TA324019] (BAG1 Antibody) at dilution 1/750  
 Secondary antibody: Goat anti rabbit IgG at 1/8000 dilution  
 Exposure time: 2 seconds



Immunohistochemistry of paraffin-embedded Human thyroid cancer tissue using [TA324019] (BAG1 Antibody) at dilution 1/40 (Original magnification: ×200)



Immunohistochemistry of paraffin-embedded Human thyroid cancer tissue using [TA324019] (BAG1 Antibody) at dilution 1/40, treated with fusion protein. (Original magnification:  $\times 200$ )