

## Product datasheet for **TA324017S**

### FAM3A Rabbit Polyclonal Antibody

#### Product data:

Product Type:	Primary Antibodies
Applications:	IHC, WB
Recommended Dilution:	WB: 500-2000 WB positive control: Mouse pancreas tissue, Human cerebella tissue lysates IHC: 50-200 Positive control: Human liver cancer Predicted cell location: Secreted
Reactivity:	Human, Mouse
Host:	Rabbit
Isotype:	IgG
Clonality:	Polyclonal
Immunogen:	Fusion protein corresponding to a region derived from 34-230 amino acids of human amily with sequence similarity 3, member Aamily with sequence similarity 3, member A
Formulation:	PBS pH7.3, 0.05% NaN <sub>3</sub> , 50% glycerol
Purification:	Antigen affinity purification
Conjugation:	Unconjugated
Storage:	Store at -20°C as received.
Stability:	Stable for 12 months from date of receipt.
Predicted Protein Size:	25 kDa
Gene Name:	family with sequence similarity 3 member A
Database Link:	<a href="#">NP_001164603</a> <a href="#">Entrez Gene 66294 Mouse</a> <a href="#">Entrez Gene 60343 Human</a> <a href="#">P98173</a>



[View online »](#)

**Background:**

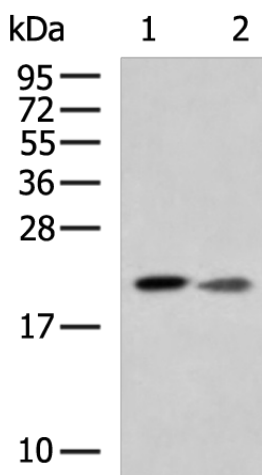
A novel cytokine-like gene family using structure-based methods to search for novel four-helix-bundle cytokines in genomics databases. There are four genes in this family; FAM3A; FAM3B; FAM3C; and FAM3D; each encoding a protein (224-235 amino acids) with a hydrophobic leader sequence. Northern analysis indicates that FAM3B is highly expressed in pancreas; FAM3D in placenta; and FAM3A and FAM3C in almost all tissues. Immunohistochemistry showed that FAM3A is expressed prominently in the vascular endothelium; particularly capillaries. Fam3a staining in capillary endothelium and endocardium of heart; as well as vascular endothelial staining in many other tissues.

**Synonyms:**

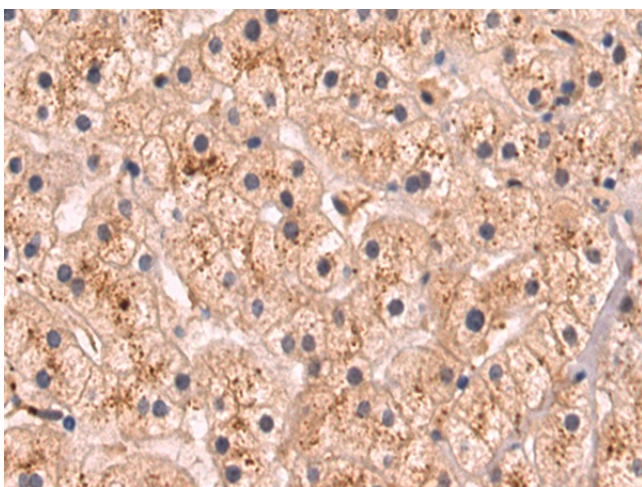
2.19; DLD; DXS560S; XAP-7

**Protein Families:**

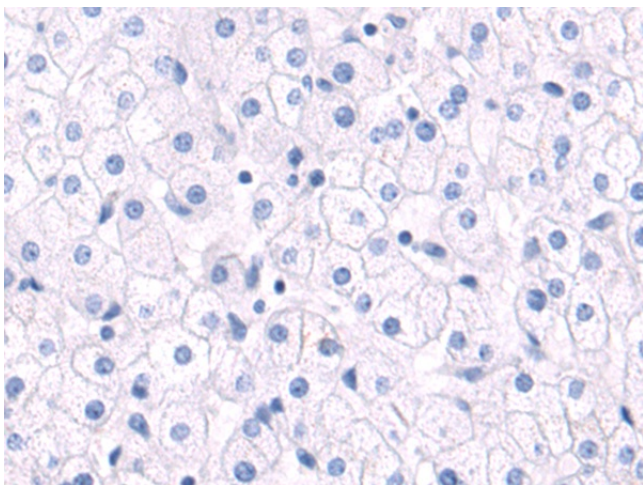
Secreted Protein, Transmembrane

**Product images:**

Gel: 12%SDS-PAGE  
Lysate: 40  $\mu$ g  
Lane 1-2: Mouse pancreas tissue  
Human cerebella tissue lysates  
Primary antibody: [TA324017] (FAM3A Antibody)  
at dilution 1/300  
Secondary antibody: Goat anti rabbit IgG at  
1/5000 dilution  
Exposure time: 30 seconds



Immunohistochemistry of paraffin-embedded  
Human liver cancer tissue using [TA324017]  
(FAM3A Antibody) at dilution 1/80 (Original  
magnification:  $\times 200$ )



Immunohistochemistry of paraffin-embedded Human liver cancer tissue using [TA324017] (FAM3A Antibody) at dilution 1/80, treated with fusion protein. (Original magnification: ×200)