

Product datasheet for **TA324017**

FAM3A Rabbit Polyclonal Antibody

Product data:

Product Type:	Primary Antibodies
Applications:	IHC, WB
Recommended Dilution:	WB: 500-2000 WB positive control: Mouse pancreas tissue, Human cerebella tissue lysates IHC: 50-200 Positive control: Human liver cancer Predicted cell location: Secreted
Reactivity:	Human, Mouse
Host:	Rabbit
Isotype:	IgG
Clonality:	Polyclonal
Immunogen:	Fusion protein corresponding to a region derived from 34-230 amino acids of human amily with sequence similarity 3, member Aamily with sequence similarity 3, member A
Formulation:	PBS pH7.3, 0.05% NaN ₃ , 50% glycerol
Concentration:	lot specific
Purification:	Antigen affinity purification
Conjugation:	Unconjugated
Storage:	Store at -20°C as received.
Stability:	Stable for 12 months from date of receipt.
Predicted Protein Size:	25 kDa
Gene Name:	family with sequence similarity 3 member A
Database Link:	NP_001164603 Entrez Gene 66294 Mouse Entrez Gene 60343 Human P98173



[View online »](#)

Background:

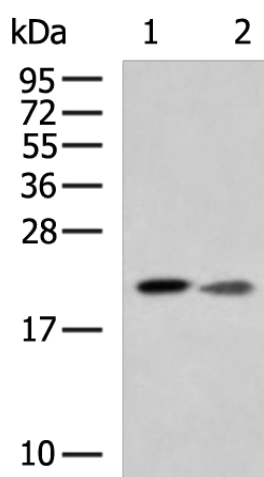
A novel cytokine-like gene family using structure-based methods to search for novel four-helix-bundle cytokines in genomics databases. There are four genes in this family; FAM3A; FAM3B; FAM3C; and FAM3D; each encoding a protein (224-235 amino acids) with a hydrophobic leader sequence. Northern analysis indicates that FAM3B is highly expressed in pancreas; FAM3D in placenta; and FAM3A and FAM3C in almost all tissues. Immunohistochemistry showed that FAM3A is expressed prominently in the vascular endothelium; particularly capillaries. Fam3a staining in capillary endothelium and endocardium of heart; as well as vascular endothelial staining in many other tissues.

Synonyms:

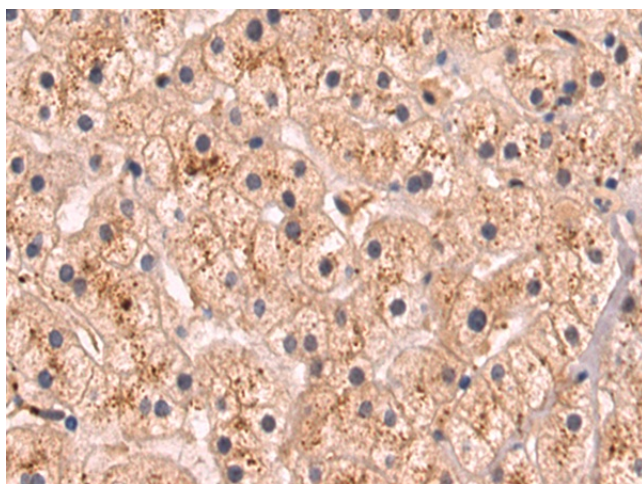
2.19; DLD; DXS560S; XAP-7

Protein Families:

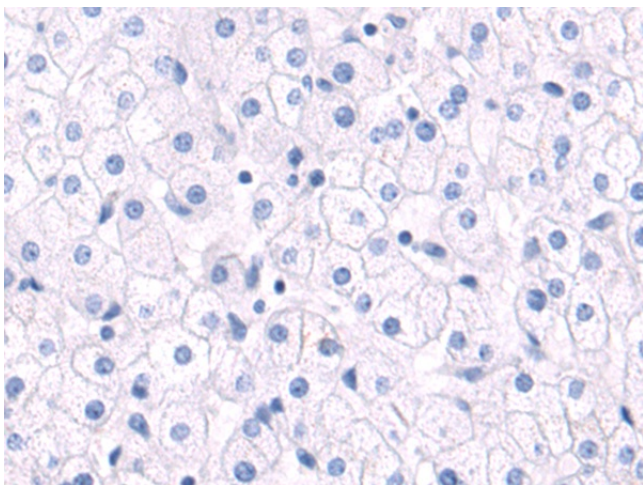
Secreted Protein, Transmembrane

Product images:


Gel: 12%SDS-PAGE
 Lysate: 40 µg
 Lane 1-2: Mouse pancreas tissue
 Human cerebella tissue lysates
 Primary antibody: TA324017 (FAM3A Antibody) at dilution 1/300
 Secondary antibody: Goat anti rabbit IgG at 1/5000 dilution
 Exposure time: 30 seconds



Immunohistochemistry of paraffin-embedded Human liver cancer tissue using TA324017 (FAM3A Antibody) at dilution 1/80 (Original magnification: ×200)



Immunohistochemistry of paraffin-embedded Human liver cancer tissue using TA324017 (FAM3A Antibody) at dilution 1/80, treated with fusion protein. (Original magnification: ×200)