

Product datasheet for **TA324016S**

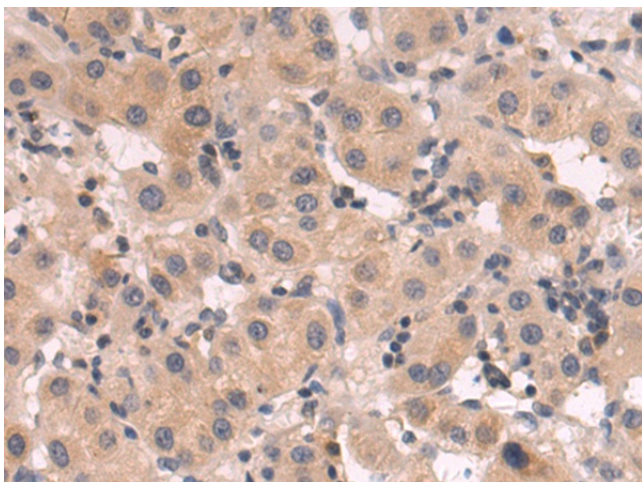
FAM3A Rabbit Polyclonal Antibody

Product data:

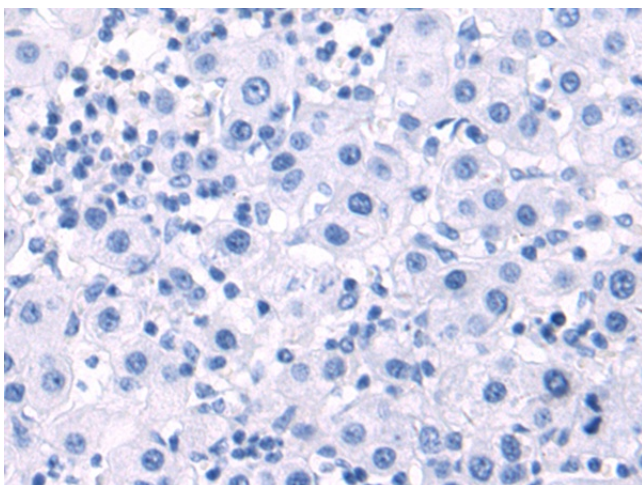
Product Type:	Primary Antibodies
Applications:	IHC
Recommended Dilution:	IHC: 50-200 Positive control: Human liver cancer Predicted cell location: Secreted
Reactivity:	Human, Mouse
Host:	Rabbit
Isotype:	IgG
Clonality:	Polyclonal
Immunogen:	Fusion protein corresponding to a region derived from 34-230 amino acids of human family with sequence similarity 3, member A
Formulation:	PBS pH7.3, 0.05% NaN ₃ , 50% glycerol
Purification:	Antigen affinity purification
Conjugation:	Unconjugated
Storage:	Store at -20°C as received.
Stability:	Stable for 12 months from date of receipt.
Gene Name:	family with sequence similarity 3 member A
Database Link:	NP_068578 Entrez Gene 66294 Mouse Entrez Gene 60343 Human P98173
Background:	This gene belongs to the FAM3 family. It may act as a defensin against invading fungal microorganisms. Mostly expression in testis; pancreas; adrenal; placenta; brain; fetal brain; liver; kidney; skeletal muscle and heart.
Synonyms:	2.19; DLD; DXS560S; XAP-7
Protein Families:	Secreted Protein, Transmembrane



[View online »](#)

Product images:

Immunohistochemistry of paraffin-embedded Human liver cancer tissue using [TA324016] (FAM3A Antibody) at dilution 1/70 (Original magnification: $\times 200$)



Immunohistochemistry of paraffin-embedded Human liver cancer tissue using [TA324016] (FAM3A Antibody) at dilution 1/70, treated with fusion protein. (Original magnification: $\times 200$)