

## Product datasheet for **TA324015S**

### Galectin 3 (LGALS3) Rabbit Polyclonal Antibody

#### Product data:

|                         |   |
|-------------------------|---|
| Product Type:           | Primary Antibodies  |
| Applications:           | IHC, WB   |
| Recommended Dilution:   | WB: 500-2000<br>WB positive control: 231, A375, HeLa, HT-29 and A549 cell<br>IHC: 50-200<br>Positive control: Human thyroid cancer<br>Predicted cell location: cytoplasm or nucleus |
| Reactivity:             | Human   |
| Host:                   | Rabbit  |
| Isotype:                | IgG   |
| Clonality:              | Polyclonal  |
| Immunogen:              | Full length fusion protein  |
| Formulation:            | PBS pH7.3, 0.05% NaN <sub>3</sub> , 50% glycerol  |
| Purification:           | Antigen affinity purification   |
| Conjugation:            | Unconjugated  |
| Storage:                | Store at -20°C as received.   |
| Stability:              | Stable for 12 months from date of receipt.  |
| Predicted Protein Size: | 26 kDa  |
| Gene Name:              | lectin, galactoside binding soluble 3   |
| Database Link:          | <a href="#">NP_001170859</a><br><a href="#">Entrez Gene 3958 Human</a><br><a href="#">P17931</a>  |



[View online »](#)

**Background:**

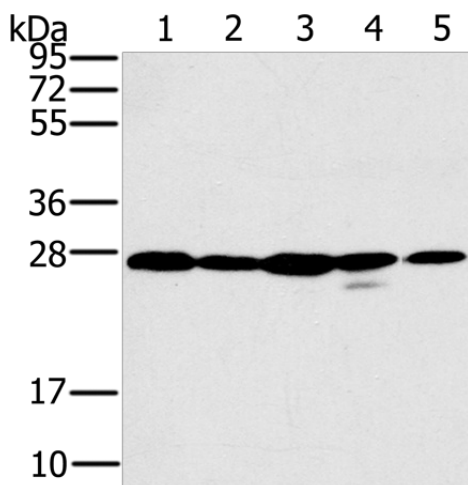
This gene encodes a member of the galectin family of carbohydrate binding proteins. Members of this protein family have an affinity for beta-galactosides. The encoded protein is characterized by an N-terminal proline-rich tandem repeat domain and a single C-terminal carbohydrate recognition domain. This protein can self-associate through the N-terminal domain allowing it to bind to multivalent saccharide ligands. This protein localizes to the extracellular matrix; the cytoplasm and the nucleus. This protein plays a role in numerous cellular functions including apoptosis; innate immunity; cell adhesion and T-cell regulation. Alternate splicing results in multiple transcript variants.

**Synonyms:**

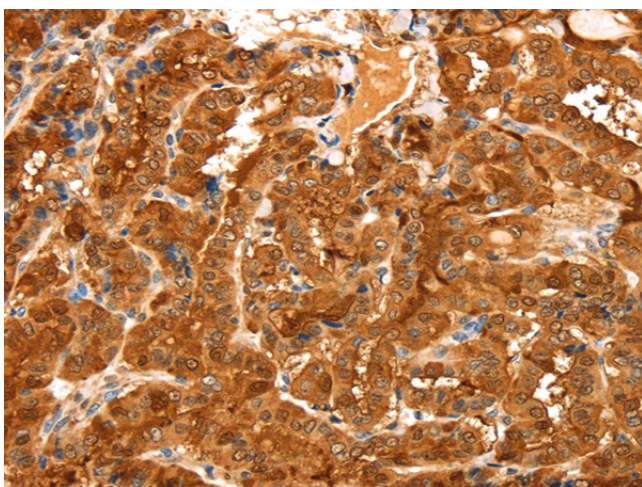
CBP35; GAL3; GALBP; GALIG; L31; LGALS2; MAC2

**Protein Families:**

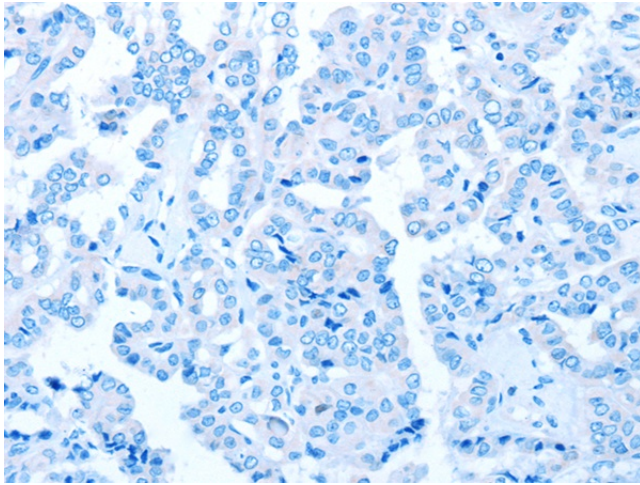
Secreted Protein

**Product images:**


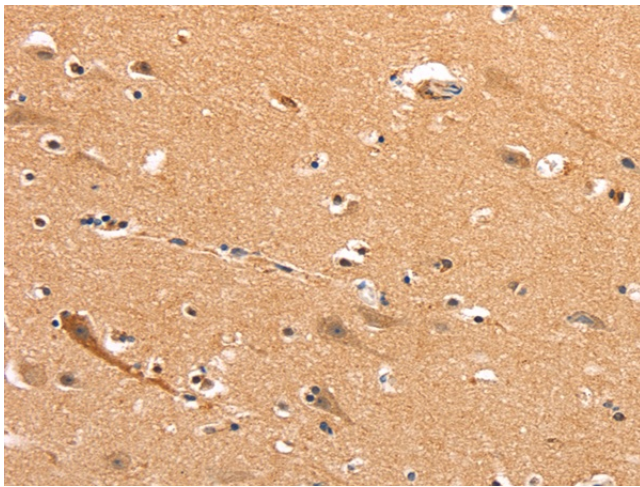
Gel: 10%SDS-PAGE  
 Lysate: 40 µg  
 Lane 1-5: 231  
 A375  
 HeLa  
 HT-29 and A549 cell  
 Primary antibody: [TA324015] (LGALS3 Antibody) at dilution 1/400  
 Secondary antibody: Goat anti rabbit IgG at 1/8000 dilution  
 Exposure time: 5 seconds



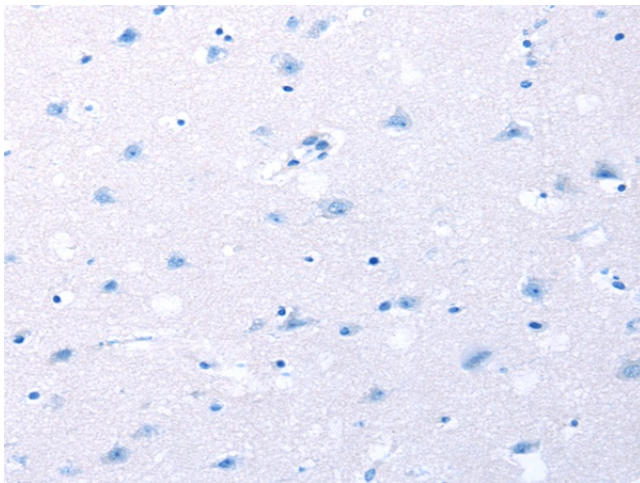
Immunohistochemistry of paraffin-embedded Human thyroid cancer tissue using [TA324015] (LGALS3 Antibody) at dilution 1/20 (Original magnification: ×200)



Immunohistochemistry of paraffin-embedded Human thyroid cancer tissue using [TA324015] (LGALS3 Antibody) at dilution 1/20, treated with fusion protein. (Original magnification:  $\times 200$ )



Immunohistochemistry of paraffin-embedded Human brain tissue using [TA324015] (LGALS3 Antibody) at dilution 1/20 (Original magnification:  $\times 200$ )



Immunohistochemistry of paraffin-embedded Human brain tissue using [TA324015] (LGALS3 Antibody) at dilution 1/20, treated with fusion protein. (Original magnification:  $\times 200$ )