

Product datasheet for **TA324015**

Galectin 3 (LGALS3) Rabbit Polyclonal Antibody

Product data:

Product Type:	Primary Antibodies
Applications:	IHC, WB
Recommended Dilution:	WB: 500-2000 WB positive control: 231, A375, HeLa, HT-29 and A549 cell IHC: 50-200 Positive control: Human thyroid cancer Predicted cell location: cytoplasm or nucleus
Reactivity:	Human
Host:	Rabbit
Isotype:	IgG
Clonality:	Polyclonal
Immunogen:	Full length fusion protein
Formulation:	PBS pH7.3, 0.05% NaN ₃ , 50% glycerol
Concentration:	lot specific
Purification:	Antigen affinity purification
Conjugation:	Unconjugated
Storage:	Store at -20°C as received.
Stability:	Stable for 12 months from date of receipt.
Predicted Protein Size:	26 kDa
Gene Name:	lectin, galactoside binding soluble 3
Database Link:	NP_001170859 Entrez Gene 3958 Human P17931



[View online »](#)

Background:

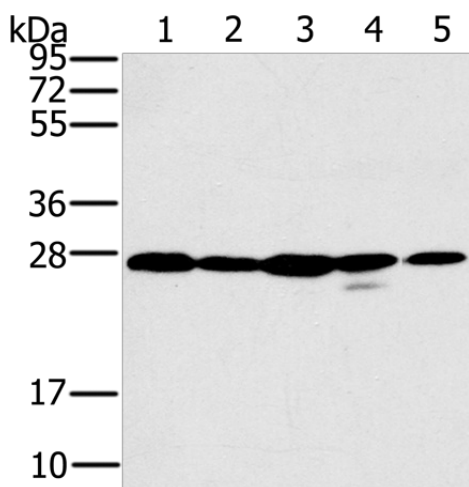
This gene encodes a member of the galectin family of carbohydrate binding proteins. Members of this protein family have an affinity for beta-galactosides. The encoded protein is characterized by an N-terminal proline-rich tandem repeat domain and a single C-terminal carbohydrate recognition domain. This protein can self-associate through the N-terminal domain allowing it to bind to multivalent saccharide ligands. This protein localizes to the extracellular matrix; the cytoplasm and the nucleus. This protein plays a role in numerous cellular functions including apoptosis; innate immunity; cell adhesion and T-cell regulation. Alternate splicing results in multiple transcript variants.

Synonyms:

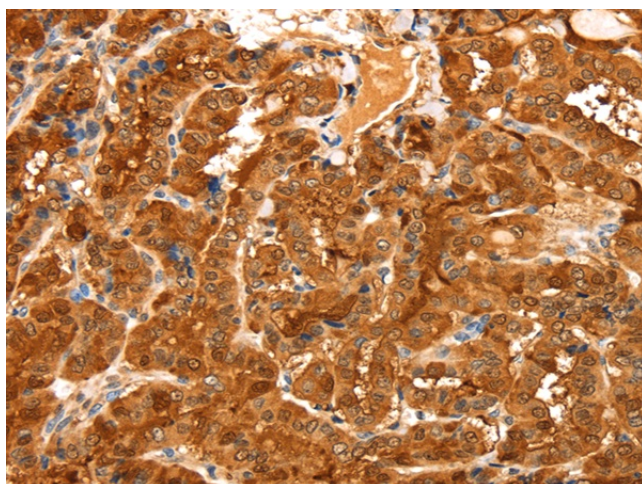
CBP35; GAL3; GALBP; GALIG; L31; LGALS2; MAC2

Protein Families:

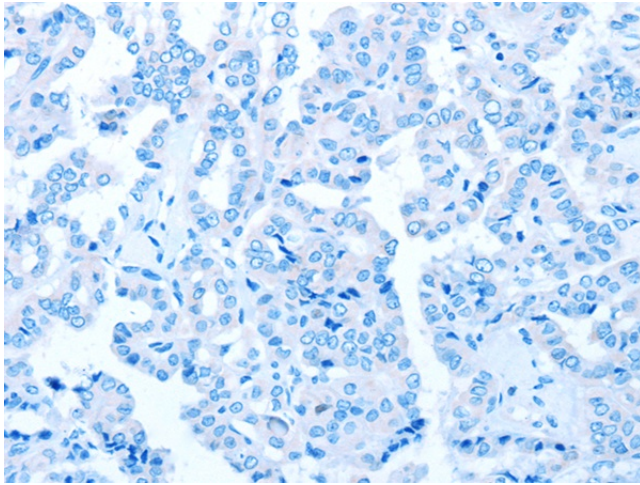
Secreted Protein

Product images:


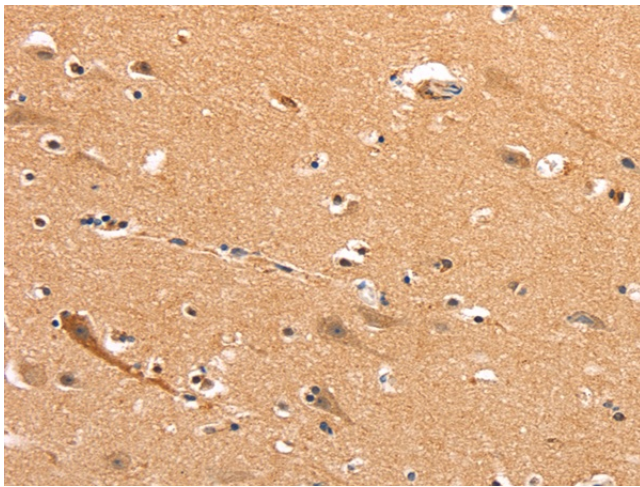
Gel: 10%SDS-PAGE
 Lysate: 40 µg
 Lane 1-5: 231
 A375
 HeLa
 HT-29 and A549 cell
 Primary antibody: TA324015 (LGALS3 Antibody)
 at dilution 1/400
 Secondary antibody: Goat anti rabbit IgG at
 1/8000 dilution
 Exposure time: 5 seconds



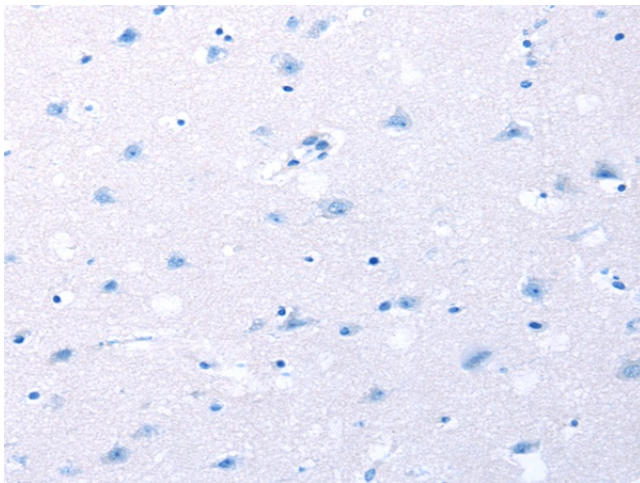
Immunohistochemistry of paraffin-embedded
 Human thyroid cancer tissue using TA324015
 (LGALS3 Antibody) at dilution 1/20 (Original
 magnification: ×200)



Immunohistochemistry of paraffin-embedded Human thyroid cancer tissue using TA324015 (LGALS3 Antibody) at dilution 1/20, treated with fusion protein. (Original magnification: $\times 200$)



Immunohistochemistry of paraffin-embedded Human brain tissue using TA324015 (LGALS3 Antibody) at dilution 1/20 (Original magnification: $\times 200$)



Immunohistochemistry of paraffin-embedded Human brain tissue using TA324015 (LGALS3 Antibody) at dilution 1/20, treated with fusion protein. (Original magnification: $\times 200$)