

## Product datasheet for **TA324009**

### Acinus (ACIN1) Rabbit Polyclonal Antibody

#### Product data:

Product Type:	Primary Antibodies
Applications:	IHC
Recommended Dilution:	IHC: 25-100 Positive control: Human breast cancer Predicted cell location: Nucleus, Cytoplasm
Reactivity:	Human, Mouse
Host:	Rabbit
Isotype:	IgG
Clonality:	Polyclonal
Immunogen:	Synthetic peptide corresponding to a region derived from 1065-1080 amino acids of human apoptotic chromatin condensation inducer 1
Formulation:	PBS pH7.3, 0.05% NaN <sub>3</sub> , 50% glycerol
Concentration:	lot specific
Purification:	Antigen affinity purification
Conjugation:	Unconjugated
Storage:	Store at -20°C as received.
Stability:	Stable for 12 months from date of receipt.
Gene Name:	apoptotic chromatin condensation inducer 1
Database Link:	<a href="#">NP_055792</a> <a href="#">Entrez Gene 56215 Mouse</a> <a href="#">Entrez Gene 22985 Human</a> <a href="#">Q9UKV3</a>



[View online »](#)

**Background:**

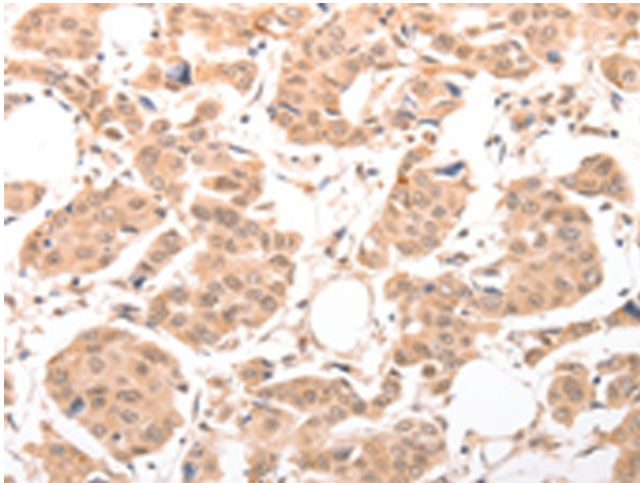
Apoptosis is defined by several morphologic nuclear changes; including chromatin condensation and nuclear fragmentation. This gene encodes a nuclear protein that induces apoptotic chromatin condensation after activation by caspase-3; without inducing DNA fragmentation. This protein has also been shown to be a component of a splicing-dependent multiprotein exon junction complex (EJC) that is deposited at splice junctions on mRNAs; as a consequence of pre-mRNA splicing. It may thus be involved in mRNA metabolism associated with splicing. Alternatively spliced transcript variants encoding different isoforms have been described for this gene.

**Synonyms:**

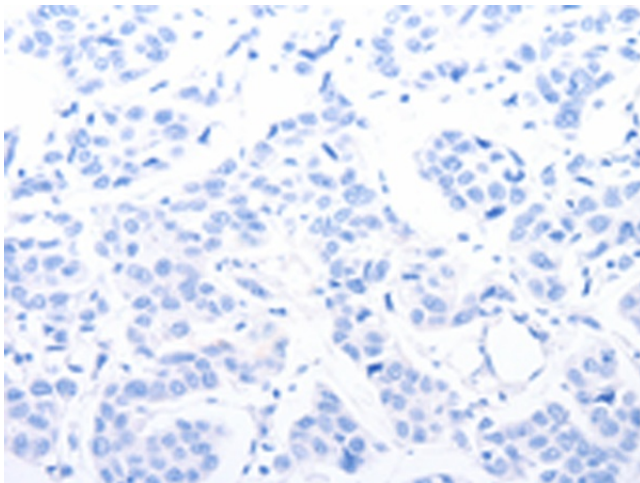
ACINUS; ACN; fSAP152

**Protein Pathways:**

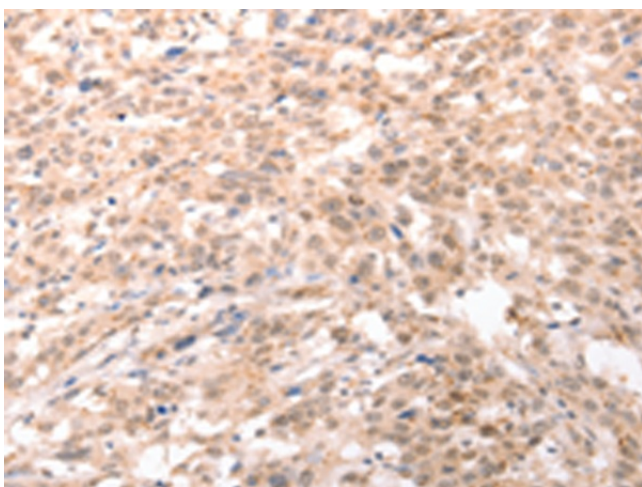
Spliceosome

**Product images:**

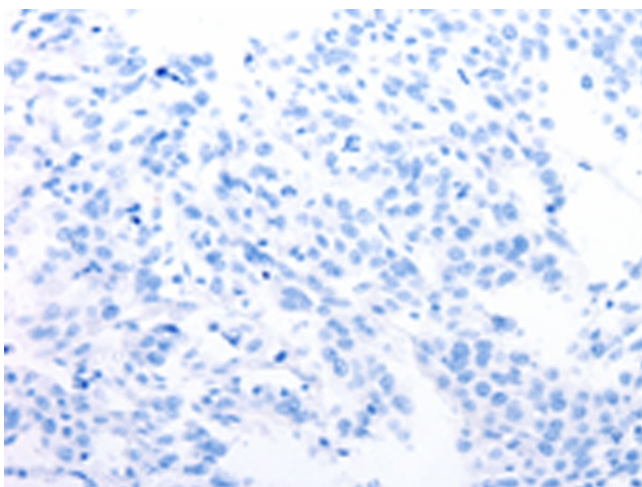
Immunohistochemistry of paraffin-embedded Human breast cancer tissue using TA324009 (ACIN1 Antibody) at dilution 1/30 (Original magnification:  $\times 200$ )



Immunohistochemistry of paraffin-embedded Human breast cancer tissue using TA324009 (ACIN1 Antibody) at dilution 1/30, treated with synthetic peptide. (Original magnification:  $\times 200$ )



Immunohistochemistry of paraffin-embedded Human esophagus cancer tissue using TA324009 (ACIN1 Antibody) at dilution 1/30 (Original magnification:  $\times 200$ )



Immunohistochemistry of paraffin-embedded Human esophagus cancer tissue using TA324009 (ACIN1 Antibody) at dilution 1/30, treated with synthetic peptide. (Original magnification:  $\times 200$ )