

Product datasheet for **TA324007S**

Neurofascin (NFASC) Rabbit Polyclonal Antibody

Product data:

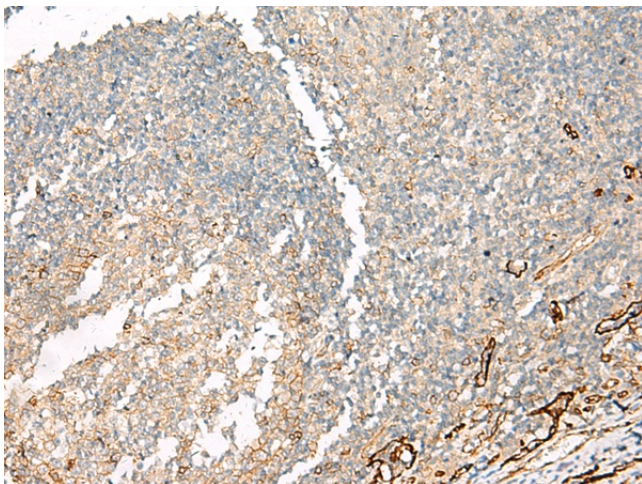
Product Type:	Primary Antibodies
Applications:	IHC
Recommended Dilution:	IHC: 20-100 Positive control: Human tonsil Predicted cell location: Cell membrane
Reactivity:	Human, Mouse, Rat
Host:	Rabbit
Isotype:	IgG
Clonality:	Polyclonal
Immunogen:	Synthetic peptide corresponding to a region derived from 1225-1240 amino acids of human neurofascin
Formulation:	PBS pH7.3, 0.05% NaN ₃ , 50% glycerol
Purification:	Antigen affinity purification
Conjugation:	Unconjugated
Storage:	Store at -20°C as received.
Stability:	Stable for 12 months from date of receipt.
Gene Name:	neurofascin
Database Link:	NP_055905 Entrez Gene 116690 Rat Entrez Gene 269116 Mouse Entrez Gene 23114 Human O94856

Background: This gene encodes an L1 family immunoglobulin cell adhesion molecule with multiple IGcam and fibronectin domains. The protein functions in neurite outgrowth; neurite fasciculation; and organization of the axon initial segment (AIS) and nodes of Ranvier on axons during early development. Both the AIS and nodes of Ranvier contain high densities of voltage-gated Na⁺ (Nav) channels which are clustered by interactions with cytoskeletal and scaffolding proteins including this protein; gliomedin; ankyrin 3 (ankyrin-G); and betaIV spectrin. This protein links the AIS extracellular matrix to the intracellular cytoskeleton. This gene undergoes extensive alternative splicing; and the full-length nature of some variants has not been determined.

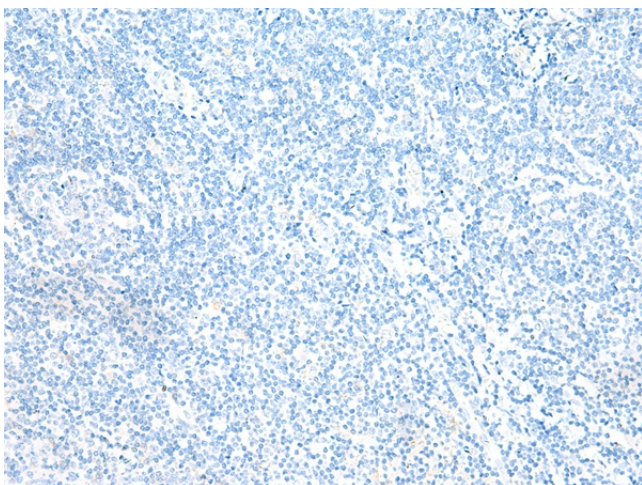


[View online »](#)

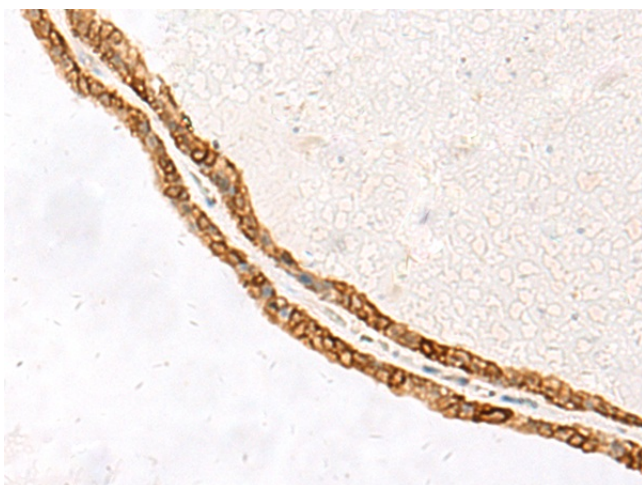
Synonyms: NF; NRCAML
Protein Families: Transmembrane
Protein Pathways: Cell adhesion molecules (CAMs)

Product images:

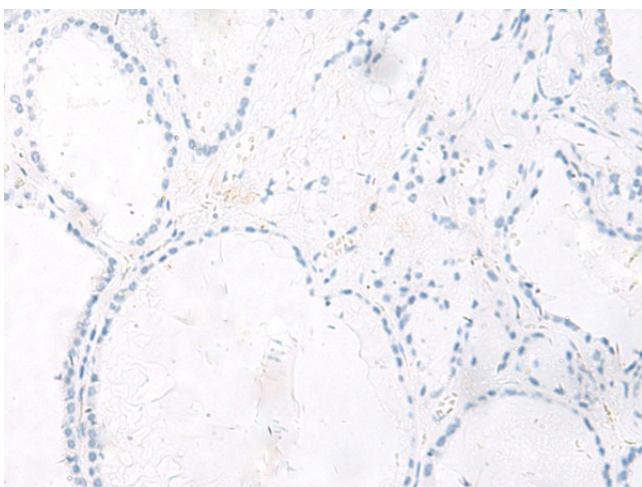
Immunohistochemistry of paraffin-embedded Human tonsil tissue using [TA324007] (NFASC Antibody) at dilution 1/30 (Original magnification: ×200)



Immunohistochemistry of paraffin-embedded Human tonsil tissue using [TA324007] (NFASC Antibody) at dilution 1/30, treated with synthetic peptide. (Original magnification: ×200)



Immunohistochemistry of paraffin-embedded Human thyroid cancer tissue using [TA324007] (NFASC Antibody) at dilution 1/30 (Original magnification: $\times 200$)



Immunohistochemistry of paraffin-embedded Human thyroid cancer tissue using [TA324007] (NFASC Antibody) at dilution 1/30, treated with synthetic peptide. (Original magnification: $\times 200$)