

## Product datasheet for **TA324007**

### Neurofascin (NFASC) Rabbit Polyclonal Antibody

#### Product data:

Product Type:	Primary Antibodies
Applications:	IHC
Recommended Dilution:	IHC: 20-100 Positive control: Human tonsil Predicted cell location: Cell membrane
Reactivity:	Human, Mouse, Rat
Host:	Rabbit
Isotype:	IgG
Clonality:	Polyclonal
Immunogen:	Synthetic peptide corresponding to a region derived from 1225-1240 amino acids of human neurofascin
Formulation:	PBS pH7.3, 0.05% NaN <sub>3</sub> , 50% glycerol
Concentration:	lot specific
Purification:	Antigen affinity purification
Conjugation:	Unconjugated
Storage:	Store at -20°C as received.
Stability:	Stable for 12 months from date of receipt.
Gene Name:	neurofascin
Database Link:	<a href="#">NP_055905</a> <a href="#">Entrez Gene 116690 RatEntrez Gene 269116 MouseEntrez Gene 23114 Human O94856</a>



[View online »](#)

**Background:**

This gene encodes an L1 family immunoglobulin cell adhesion molecule with multiple IGcam and fibronectin domains. The protein functions in neurite outgrowth; neurite fasciculation; and organization of the axon initial segment (AIS) and nodes of Ranvier on axons during early development. Both the AIS and nodes of Ranvier contain high densities of voltage-gated Na<sup>+</sup> (Nav) channels which are clustered by interactions with cytoskeletal and scaffolding proteins including this protein; gliomedin; ankyrin 3 (ankyrin-G); and betaIV spectrin. This protein links the AIS extracellular matrix to the intracellular cytoskeleton. This gene undergoes extensive alternative splicing; and the full-length nature of some variants has not been determined.

**Synonyms:**

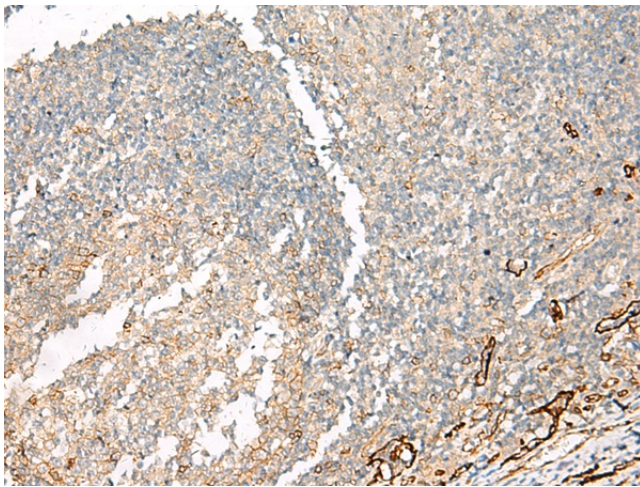
NF; NRCAML

**Protein Families:**

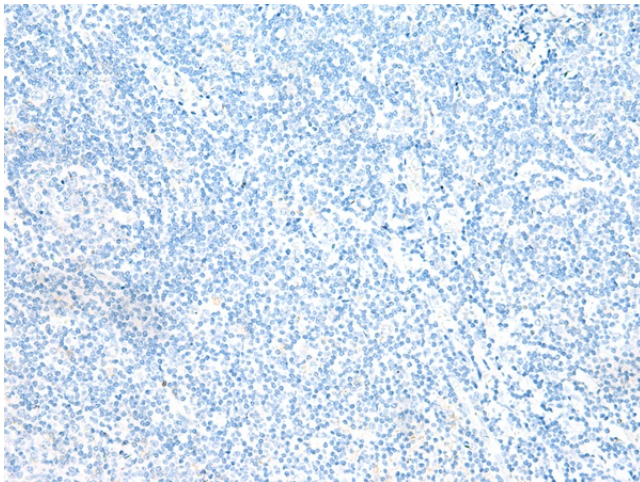
Transmembrane

**Protein Pathways:**

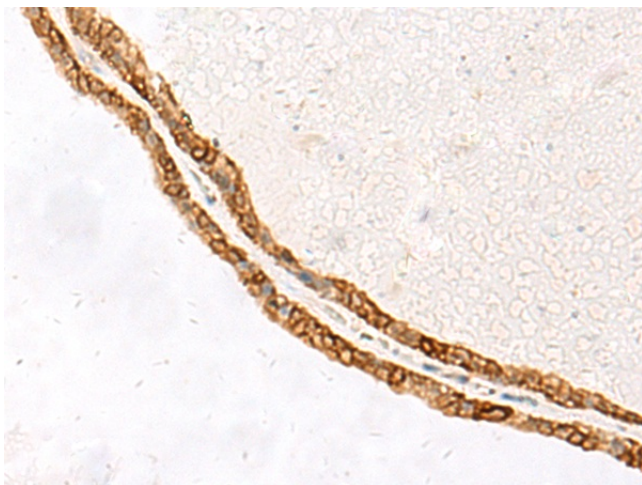
Cell adhesion molecules (CAMs)

**Product images:**

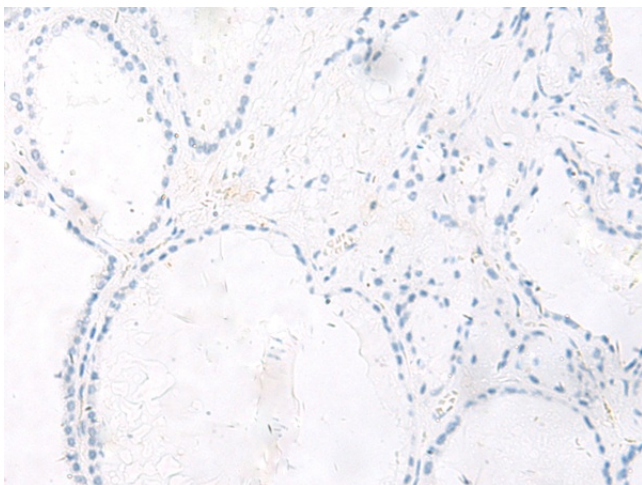
Immunohistochemistry of paraffin-embedded Human tonsil tissue using TA324007 (NFASC Antibody) at dilution 1/30 (Original magnification: ×200)



Immunohistochemistry of paraffin-embedded Human tonsil tissue using TA324007 (NFASC Antibody) at dilution 1/30, treated with synthetic peptide. (Original magnification: ×200)



Immunohistochemistry of paraffin-embedded Human thyroid cancer tissue using TA324007 (NFASC Antibody) at dilution 1/30 (Original magnification:  $\times 200$ )



Immunohistochemistry of paraffin-embedded Human thyroid cancer tissue using TA324007 (NFASC Antibody) at dilution 1/30, treated with synthetic peptide. (Original magnification:  $\times 200$ )