

## Product datasheet for **TA324004S**

### Frizzled 6 (FZD6) Rabbit Polyclonal Antibody

#### Product data:

|                       |   |
|-----------------------|---|
| Product Type:         | Primary Antibodies  |
| Applications:         | IHC   |
| Recommended Dilution: | IHC: 100-300<br>Positive control: Human thyroid cancer<br>Predicted cell location: Cytoplasm  |
| Reactivity:           | Human, Mouse  |
| Host:                 | Rabbit  |
| Isotype:              | IgG   |
| Clonality:            | Polyclonal  |
| Immunogen:            | Synthetic peptide corresponding to a region derived from 47-60 amino acids of human frizzled family receptor 6                        |
| Formulation:          | PBS pH7.3, 0.05% NaN <sub>3</sub> , 50% glycerol  |
| Purification:         | Antigen affinity purification   |
| Conjugation:          | Unconjugated  |
| Storage:              | Store at -20°C as received.   |
| Stability:            | Stable for 12 months from date of receipt.  |
| Gene Name:            | frizzled class receptor 6   |
| Database Link:        | <a href="#">NP_003497</a><br><a href="#">Entrez Gene 14368 Mouse</a> <a href="#">Entrez Gene 8323 Human</a><br><a href="#">O60353</a> |

**Background:** This gene represents a member of the 'frizzled' gene family; which encode 7-transmembrane domain proteins that are receptors for Wnt signaling proteins. The protein encoded by this family member contains a signal peptide; a cysteine-rich domain in the N-terminal extracellular region; and seven transmembrane domains; but unlike other family members; this protein does not contain a C-terminal PDZ domain-binding motif. This protein functions as a negative regulator of the canonical Wnt/beta-catenin signaling cascade; thereby inhibiting the processes that trigger oncogenic transformation; cell proliferation; and inhibition of apoptosis. Alternative splicing results in multiple transcript variants; some of which do not encode a protein with a predicted signal peptide.



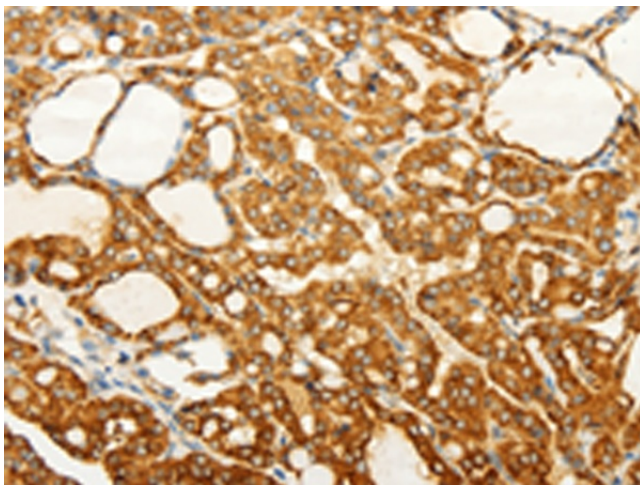
[View online »](#)

**Synonyms:** FZ-6; FZ6; HFZ6; NDNC10

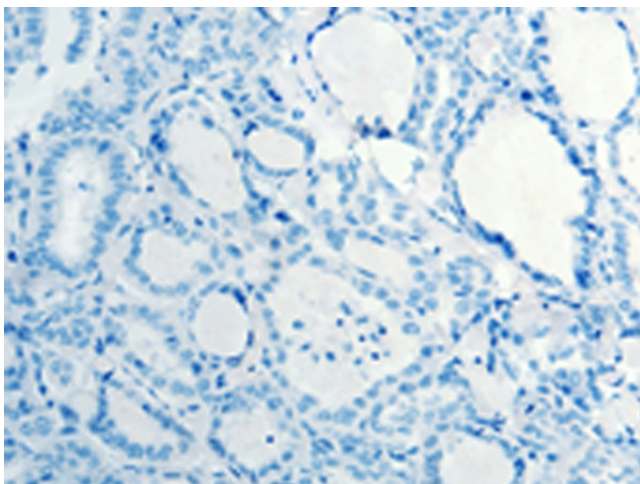
**Protein Families:** Druggable Genome, GPCR, Transmembrane

**Protein Pathways:** Basal cell carcinoma, Colorectal cancer, Melanogenesis, Pathways in cancer, Wnt signaling pathway

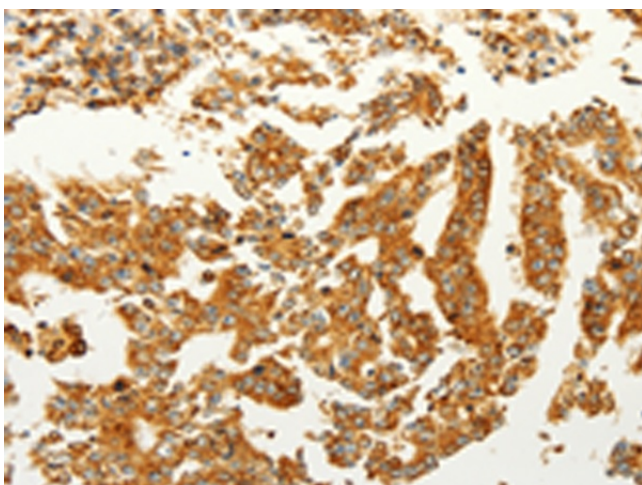
**Product images:**



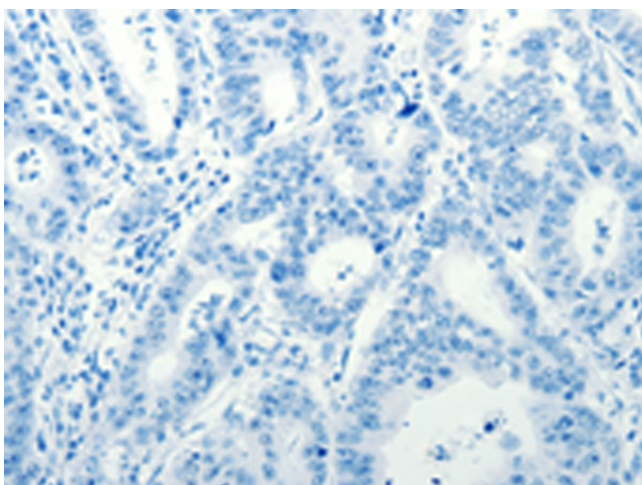
Immunohistochemistry of paraffin-embedded Human thyroid cancer tissue using [TA324004] (FZD6 Antibody) at dilution 1/60 (Original magnification:  $\times 200$ )



Immunohistochemistry of paraffin-embedded Human thyroid cancer tissue using [TA324004] (FZD6 Antibody) at dilution 1/60, treated with synthetic peptide. (Original magnification:  $\times 200$ )



Immunohistochemistry of paraffin-embedded Human gastric cancer tissue using [TA324004] (FZD6 Antibody) at dilution 1/60 (Original magnification:  $\times 200$ )



Immunohistochemistry of paraffin-embedded Human gastric cancer tissue using [TA324004] (FZD6 Antibody) at dilution 1/60, treated with synthetic peptide. (Original magnification:  $\times 200$ )