

## Product datasheet for **TA324004**

### Frizzled 6 (FZD6) Rabbit Polyclonal Antibody

#### Product data:

Product Type:	Primary Antibodies
Applications:	IHC
Recommended Dilution:	IHC: 100-300 Positive control: Human thyroid cancer Predicted cell location: Cytoplasm
Reactivity:	Human, Mouse
Host:	Rabbit
Isotype:	IgG
Clonality:	Polyclonal
Immunogen:	Synthetic peptide corresponding to a region derived from 47-60 amino acids of human frizzled family receptor 6
Formulation:	PBS pH7.3, 0.05% NaN <sub>3</sub> , 50% glycerol
Concentration:	lot specific
Purification:	Antigen affinity purification
Conjugation:	Unconjugated
Storage:	Store at -20°C as received.
Stability:	Stable for 12 months from date of receipt.
Gene Name:	frizzled class receptor 6
Database Link:	<a href="#">NP_003497</a> <a href="#">Entrez Gene 14368 Mouse</a> <a href="#">Entrez Gene 8323 Human</a> <a href="#">O60353</a>



[View online »](#)

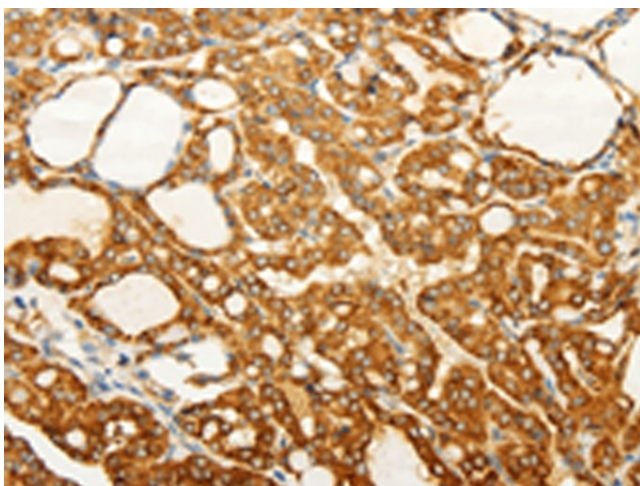
**Background:** This gene represents a member of the 'frizzled' gene family; which encode 7-transmembrane domain proteins that are receptors for Wnt signaling proteins. The protein encoded by this family member contains a signal peptide; a cysteine-rich domain in the N-terminal extracellular region; and seven transmembrane domains; but unlike other family members; this protein does not contain a C-terminal PDZ domain-binding motif. This protein functions as a negative regulator of the canonical Wnt/beta-catenin signaling cascade; thereby inhibiting the processes that trigger oncogenic transformation; cell proliferation; and inhibition of apoptosis. Alternative splicing results in multiple transcript variants; some of which do not encode a protein with a predicted signal peptide.

**Synonyms:** FZ-6; FZ6; HFZ6; NDNC10

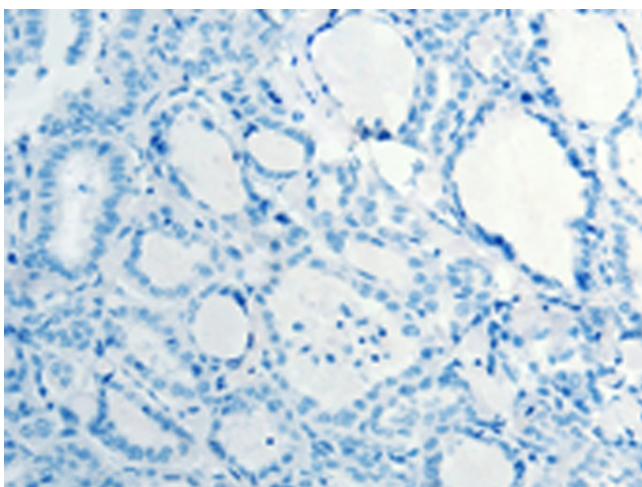
**Protein Families:** Druggable Genome, GPCR, Transmembrane

**Protein Pathways:** Basal cell carcinoma, Colorectal cancer, Melanogenesis, Pathways in cancer, Wnt signaling pathway

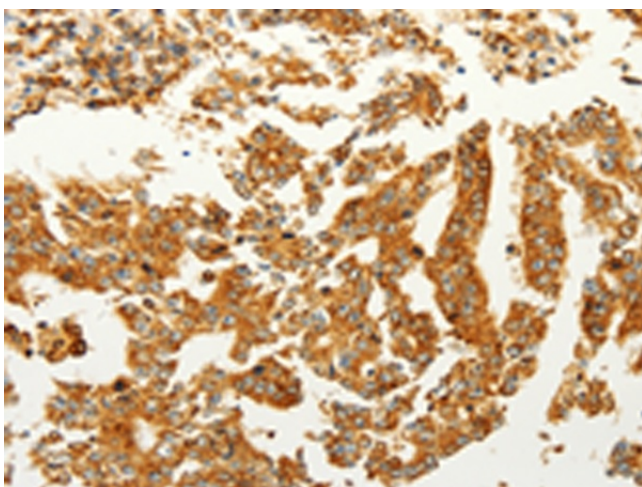
### Product images:



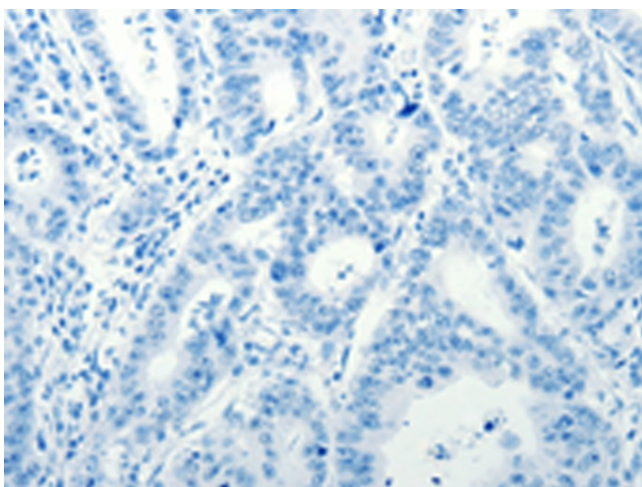
Immunohistochemistry of paraffin-embedded Human thyroid cancer tissue using TA324004 (FZD6 Antibody) at dilution 1/60 (Original magnification: ×200)



Immunohistochemistry of paraffin-embedded Human thyroid cancer tissue using TA324004 (FZD6 Antibody) at dilution 1/60, treated with synthetic peptide. (Original magnification:  $\times 200$ )



Immunohistochemistry of paraffin-embedded Human gastric cancer tissue using TA324004 (FZD6 Antibody) at dilution 1/60 (Original magnification:  $\times 200$ )



Immunohistochemistry of paraffin-embedded Human gastric cancer tissue using TA324004 (FZD6 Antibody) at dilution 1/60, treated with synthetic peptide. (Original magnification:  $\times 200$ )