

Product datasheet for **TA324002**

Glycogen synthase 1 (GYS1) Rabbit Polyclonal Antibody

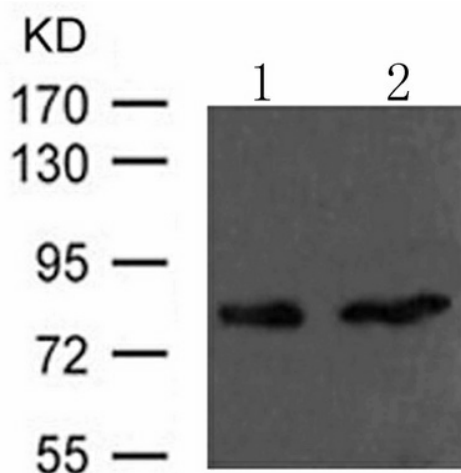
Product data:

Product Type:	Primary Antibodies
Applications:	WB
Recommended Dilution:	WB: 1:500-1000
Reactivity:	Human, Mouse, Rat
Host:	Rabbit
Isotype:	IgG
Clonality:	Polyclonal
Immunogen:	Peptide sequence around aa. 644~648 (P-S-P-S-L) derived from Human Glycogen Synthase .
Formulation:	PBS pH7.3, 0.05% NaN ₃ , 50% glycerol
Concentration:	lot specific
Purification:	Antigen affinity purification
Conjugation:	Unconjugated
Storage:	Store at -20°C as received.
Stability:	Stable for 12 months from date of receipt.
Predicted Protein Size:	84 kDa
Gene Name:	glycogen synthase 1
Database Link:	NP_001155059 Entrez Gene 14936 MouseEntrez Gene 690987 RatEntrez Gene 2997 Human P13807
Background:	The protein encoded by this gene catalyzes the addition of glucose monomers to the growing glycogen molecule through the formation of alpha-1,4-glycoside linkages. Mutations in this gene are associated with muscle glycogen storage disease. Alternatively spliced transcript variants encoding different isoforms have been found for this gene.
Synonyms:	GSY; GYS
Protein Pathways:	Insulin signaling pathway, Starch and sucrose metabolism



[View online »](#)

Product images:



Predicted band size: 84 kDa. Positive control: HeLa and 293 cells lysate. Recommended dilution: 1/500-1000. (Gel: 8%SDS-PAGE Lane 1, 2: HeLa and 293 cells lysate Lysates: 30 ug per lane Primary antibody: 1/500 dilution Secondary antibody: Goat anti Rabbit IgG - H&L (HRP) at 1/10000 dilution Exposure time: 1 minute)