

## Product datasheet for **TA324000S**

### RPAP3 Rabbit Polyclonal Antibody

#### Product data:

Product Type:	Primary Antibodies
Applications:	IHC, WB
Recommended Dilution:	WB: 500-2000 WB positive control: Mouse kidney tissue IHC: 15-50 Positive control: Human brain Predicted cell location: Cytoplasm
Reactivity:	Human, Mouse
Host:	Rabbit
Isotype:	IgG
Clonality:	Polyclonal
Immunogen:	Fusion protein corresponding to C terminal 185 amino acids of human RNA polymerase II associated protein 3
Formulation:	PBS pH7.3, 0.05% NaN <sub>3</sub> , 50% glycerol
Purification:	Antigen affinity purification
Conjugation:	Unconjugated
Storage:	Store at -20°C as received.
Stability:	Stable for 12 months from date of receipt.
Predicted Protein Size:	76 kDa
Gene Name:	RNA polymerase II associated protein 3
Database Link:	<a href="#">NP_001139547</a> <a href="#">Entrez Gene 71919 Mouse</a> <a href="#">Entrez Gene 79657 Human</a> <a href="#">Q9H6T3</a>

**Background:** This gene encodes an RNA polymerase II-associated protein. The encoded protein may function in transcriptional regulation and may also regulate apoptosis. Alternatively spliced transcript variants have been described. Forms an interface between the RNA polymerase II enzyme and chaperone/scaffolding protein; suggesting that it is required to connect RNA polymerase II to regulators of protein complex formation.

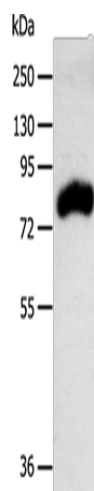


[View online »](#)

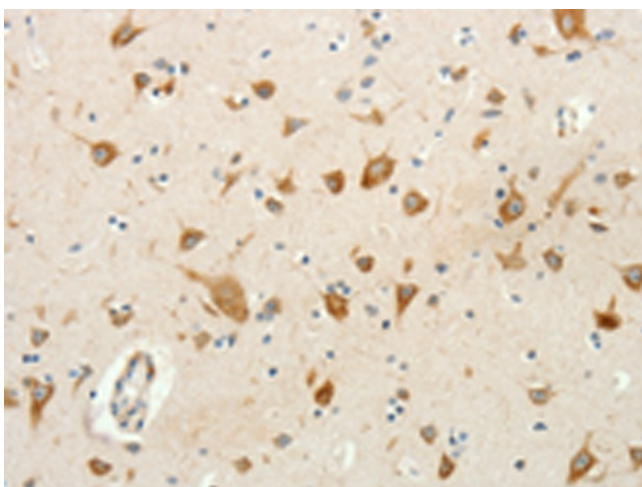
Synonyms: FLJ21908

Protein Families: Protease

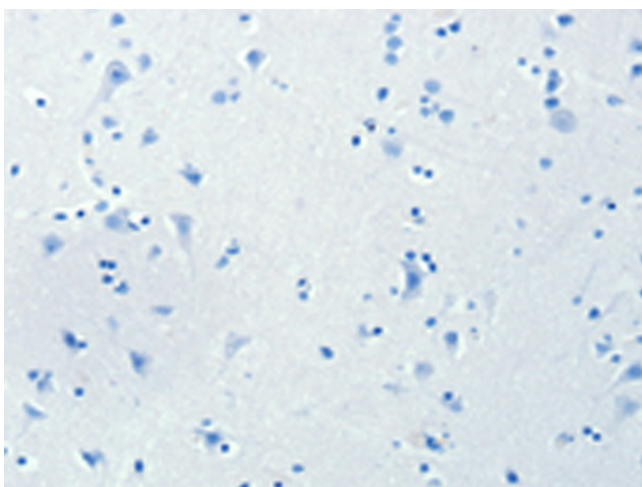
### Product images:



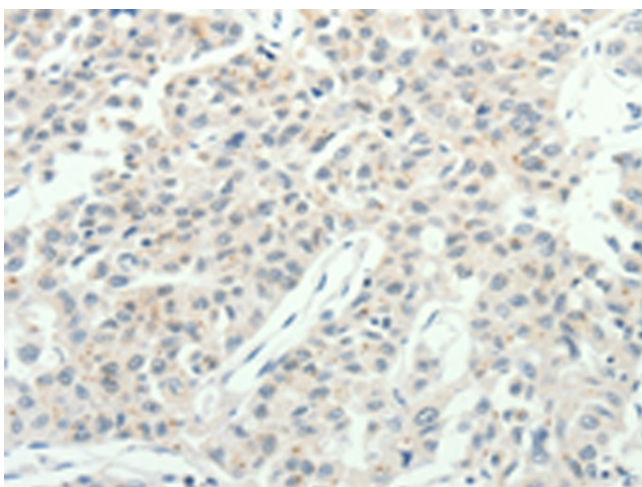
Gel: 10%SDS-PAGE  
Lysate: 40  $\mu$ g  
Lane: Mouse kidney tissue  
Primary antibody: [TA324000] (RPAP3 Antibody) at dilution 1/400  
Secondary antibody: Goat anti rabbit IgG at 1/8000 dilution  
Exposure time: 1 minute



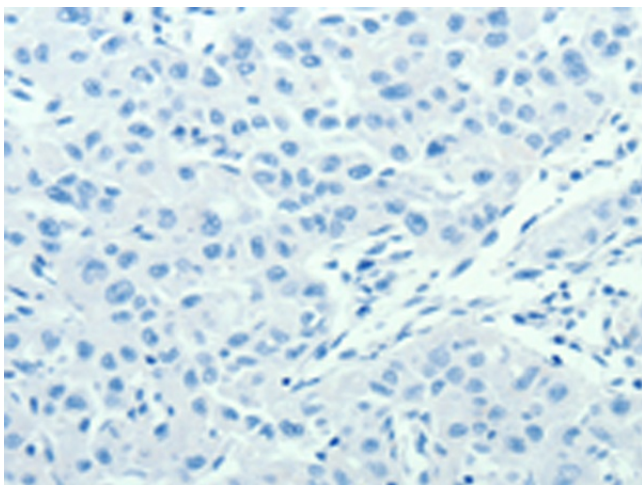
Immunohistochemistry of paraffin-embedded Human brain tissue using [TA324000] (RPAP3 Antibody) at dilution 1/20 (Original magnification:  $\times$ 200)



Immunohistochemistry of paraffin-embedded Human brain tissue using [TA324000] (RPAP3 Antibody) at dilution 1/20, treated with fusion protein. (Original magnification: x200)



Immunohistochemistry of paraffin-embedded Human lung cancer tissue using [TA324000] (RPAP3 Antibody) at dilution 1/20 (Original magnification: x200)



Immunohistochemistry of paraffin-embedded Human lung cancer tissue using [TA324000] (RPAP3 Antibody) at dilution 1/20, treated with fusion protein. (Original magnification: x200)