

## Product datasheet for **TA323998**

### CIKS (TRAF3IP2) Rabbit Polyclonal Antibody

#### Product data:

Product Type:	Primary Antibodies
Applications:	IHC, WB
Recommended Dilution:	WB: 200-1000 WB positive control: Jurkat cells IHC: 25-100 Positive control: Human colon cancer Predicted cell location: Cytoplasm
Reactivity:	Human
Host:	Rabbit
Isotype:	IgG
Clonality:	Polyclonal
Immunogen:	Fusion protein corresponding to a region derived from 1-256 amino acids of human TRAF3 interacting protein 2
Formulation:	PBS pH7.3, 0.05% NaN <sub>3</sub> , 50% glycerol
Concentration:	lot specific
Purification:	Antigen affinity purification
Conjugation:	Unconjugated
Storage:	Store at -20°C as received.
Stability:	Stable for 12 months from date of receipt.
Predicted Protein Size:	65 kDa
Gene Name:	TRAF3 interacting protein 2
Database Link:	<a href="#">NP_001157753</a> <a href="#">Entrez Gene 10758 Human O43734</a>



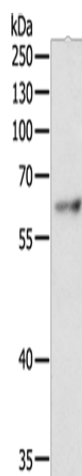
[View online »](#)

**Background:**

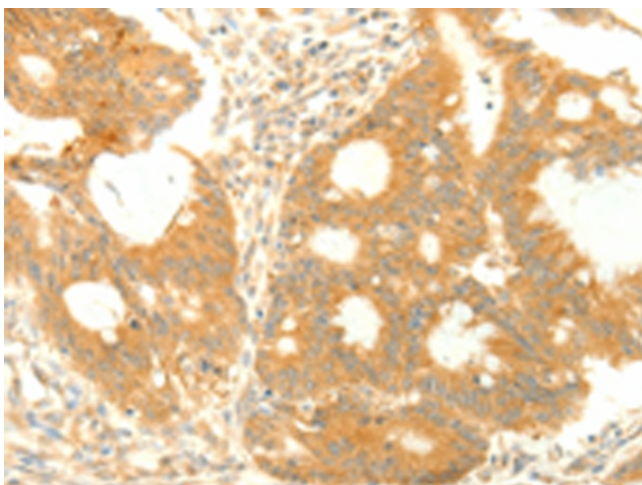
This gene encodes a protein involved in regulating responses to cytokines by members of the Rel/NF-kappaB transcription factor family. These factors play a central role in innate immunity in response to pathogens; inflammatory signals and stress. This gene product interacts with TRAF proteins (tumor necrosis factor receptor-associated factors) and either I-kappaB kinase or MAP kinase to activate either NF-kappaB or Jun kinase. Several alternative transcripts encoding different isoforms have been identified. Another transcript; which does not encode a protein and is transcribed in the opposite orientation; has been identified. Overexpression of this transcript has been shown to reduce expression of at least one of the protein encoding transcripts; suggesting it has a regulatory role in the expression of this gene.

**Synonyms:**

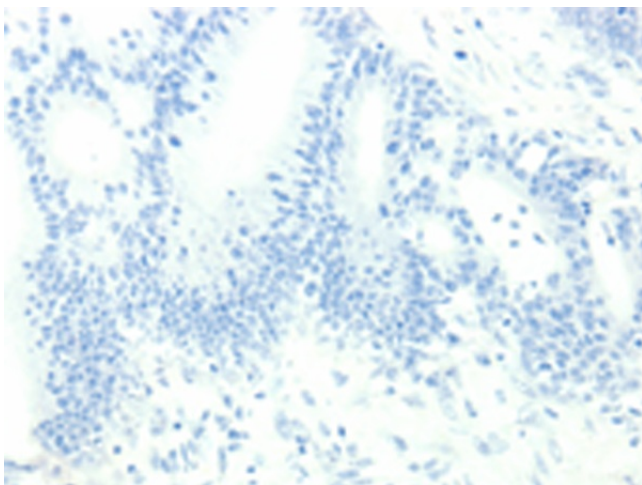
ACT1; C6orf2; C6orf4; C6orf5; C6orf6; CANDF8; CIKS; PSORS13

**Product images:**

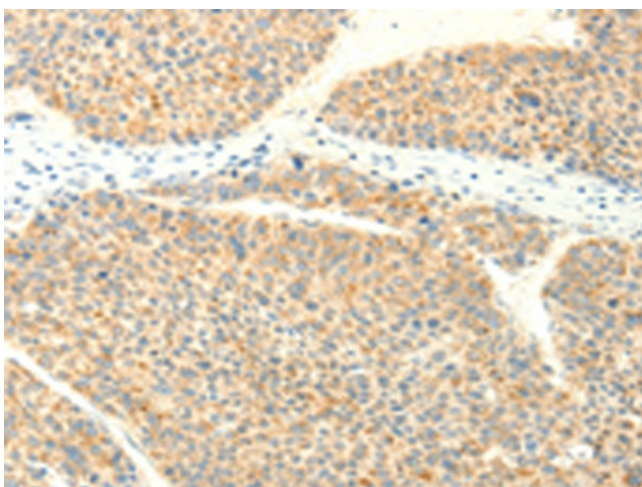
Gel: 10%SDS-PAGE  
Lysate: 40 µg  
Lane: Jurkat cells  
Primary antibody: TA323998 (TRAF3IP2 Antibody) at dilution 1/400  
Secondary antibody: Goat anti rabbit IgG at 1/8000 dilution  
Exposure time: 20 seconds



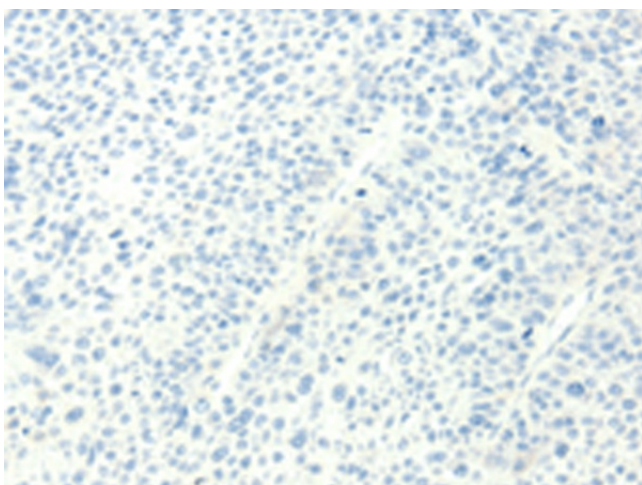
Immunohistochemistry of paraffin-embedded Human colon cancer tissue using TA323998 (TRAF3IP2 Antibody) at dilution 1/25 (Original magnification: ×200)



Immunohistochemistry of paraffin-embedded Human colon cancer tissue using TA323998 (TRAF3IP2 Antibody) at dilution 1/25, treated with fusion protein. (Original magnification:  $\times 200$ )



Immunohistochemistry of paraffin-embedded Human liver cancer tissue using TA323998 (TRAF3IP2 Antibody) at dilution 1/25 (Original magnification:  $\times 200$ )



Immunohistochemistry of paraffin-embedded Human liver cancer tissue using TA323998 (TRAF3IP2 Antibody) at dilution 1/25, treated with fusion protein. (Original magnification:  $\times 200$ )