

Product datasheet for **TA323993**

IDE Rabbit Polyclonal Antibody

Product data:

Product Type:	Primary Antibodies
Applications:	IHC, WB
Recommended Dilution:	WB: 500-2000 WB positive control: K562 cells IHC: 10-50 Positive control: Human colon cancer Predicted cell location: Cytoplasm
Reactivity:	Human, Mouse, Rat
Host:	Rabbit
Isotype:	IgG
Clonality:	Polyclonal
Immunogen:	Fusion protein corresponding to a C terminal 300 amino acids of human insulin-degrading enzyme
Formulation:	PBS pH7.3, 0.05% NaN ₃ , 50% glycerol
Concentration:	lot specific
Purification:	Antigen affinity purification
Conjugation:	Unconjugated
Storage:	Store at -20°C as received.
Stability:	Stable for 12 months from date of receipt.
Predicted Protein Size:	118 kDa
Gene Name:	insulin degrading enzyme
Database Link:	NP_001159418 Entrez Gene 15925 Mouse Entrez Gene 25700 Rat Entrez Gene 3416 Human P14735



[View online »](#)

Background:

This gene encodes a zinc metallopeptidase that degrades intracellular insulin; and thereby terminates insulin's activity; as well as participating in intercellular peptide signalling by degrading diverse peptides such as glucagon; amylin; bradykinin; and kallidin. The preferential affinity of this enzyme for insulin results in insulin-mediated inhibition of the degradation of other peptides such as beta-amyloid. Deficiencies in this protein's function are associated with Alzheimer's disease and type 2 diabetes mellitus but mutations in this gene have not been shown to be causative for these diseases. This protein localizes primarily to the cytoplasm but in some cell types localizes to the extracellular space; cell membrane; peroxisome; and mitochondrion. Alternative splicing results in multiple transcript variants encoding distinct isoforms. Additional transcript variants have been described but have not been experimentally verified.

Synonyms:

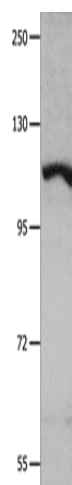
INSULYSIN

Protein Families:

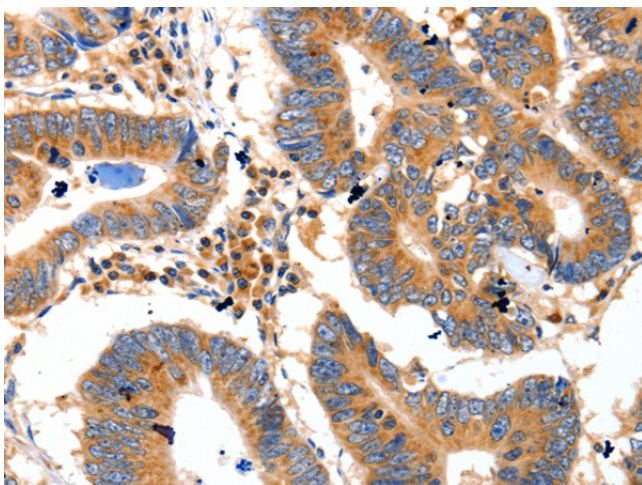
Druggable Genome, Protease

Protein Pathways:

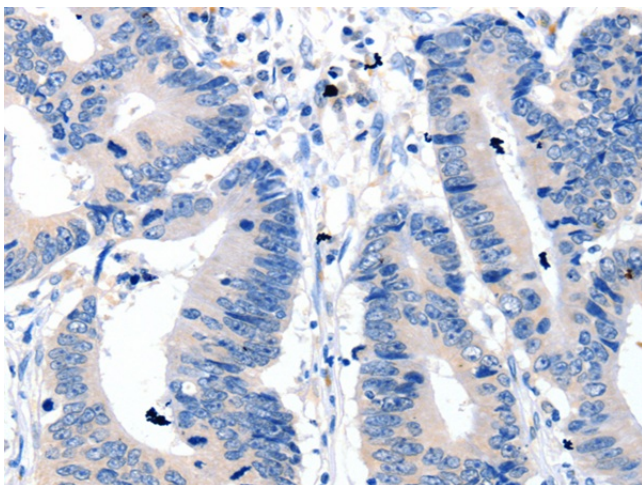
Alzheimer's disease

Product images:

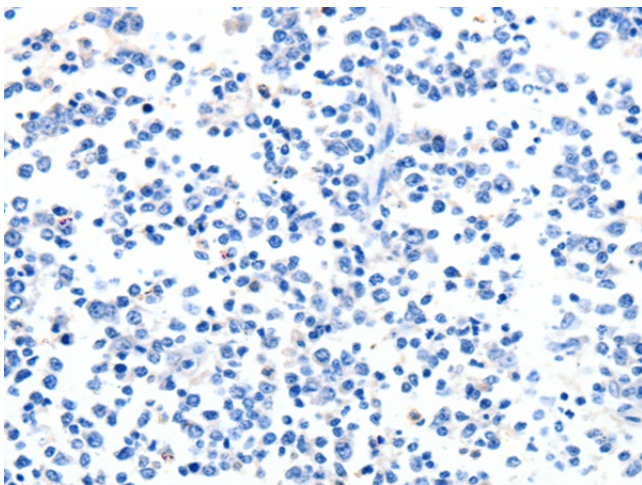
Gel: 8%SDS-PAGE
Lysate: 40 µg
Lane: K562 cells
Primary antibody: TA323993 (IDE Antibody) at dilution 1/350
Secondary antibody: Goat anti rabbit IgG at 1/8000 dilution
Exposure time: 40 seconds



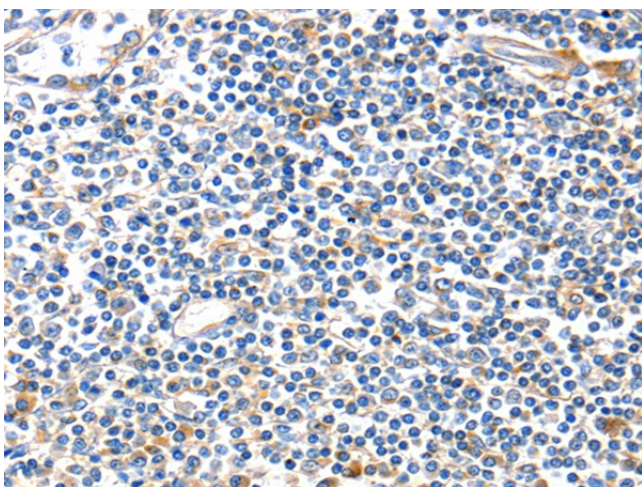
Immunohistochemistry of paraffin-embedded Human colon cancer tissue using TA323993 (IDE Antibody) at dilution 1/20 (Original magnification: x200)



Immunohistochemistry of paraffin-embedded Human colon cancer tissue using TA323993 (IDE Antibody) at dilution 1/20, treated with fusion protein. (Original magnification: x200)



Immunohistochemistry of paraffin-embedded Human tonsil tissue using TA323993 (IDE Antibody) at dilution 1/20 (Original magnification: x200)



Immunohistochemistry of paraffin-embedded Human tonsil tissue using TA323993 (IDE Antibody) at dilution 1/20, treated with fusion protein. (Original magnification: x200)